

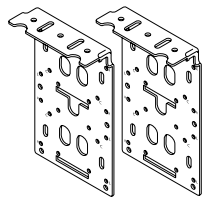
CONTRACT PLUS⁺ 7.5" OPEN DUAL BRACKET ASSEMBLY INSTRUCTIONS

Rollashade.com
info@rollashade.com
951.245.5077

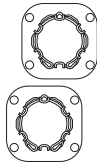
© Copyright Roll A Shade® Inc. All Rights Reserved.

 ROLL A SHADE

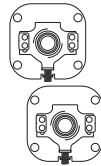
HARDWARE INCLUDED



Motor
Bracket

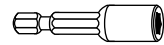


Star Head Motor
Insert Plate

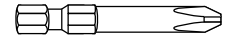


Adjuster Insert
Plate

TOOLS REQUIRED



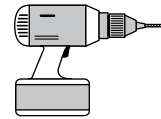
3/8" Hex Head



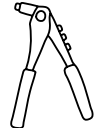
Phillips Head



1/8" Drill Bit



Drill

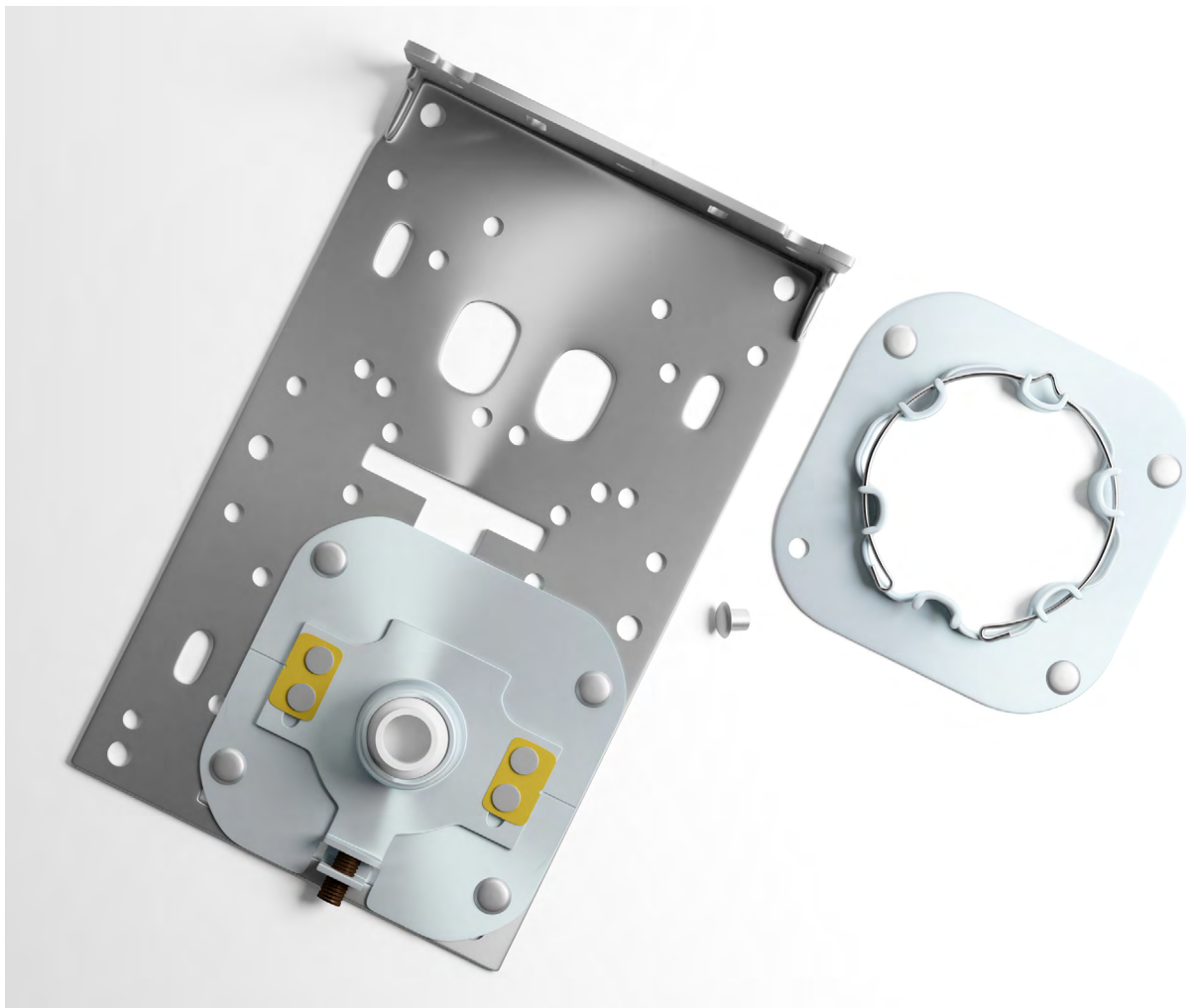


Rivet Gun

1 SELECT THE INSERT PLATES

Select the required insert plates for the open dual bracket from the following:

- Star head motor insert
- Adjustable pin end insert w/ swivel ball bearing
- ST50 DC motor square insert



2 SELECT THE CORRECT POSITIONS YOU NEED FOR ASSEMBLED BRACKET

For example: motor side at left control.

NOTE:

One insert plate has 4 holes. There are 2 sets of 8 holes for a dual shade. Each bracket comes with both a “R” and “L” engravings. Once mounting plates have been installed either “R” or “L” should be visible if done correctly.

- Enlarge selected holes, just a bit drilling to remove the paint covered holes and let the rivets go through.
- Install the first mount by inserting the RAS standard use rivets through the mounting bracket and main bracket. Rivets should come through from the shade side of the bracket towards the outside. This will ensure no potential jagged edge near the fabric.
- Fix the main bracket in place using the rivet gun.
- Repeat bullet points to join the plate at low location.
- Assembled dual bracket is done. Check the plate location ensuring the needed correct orientation was used to satisfy the order.

