



CORDLESS

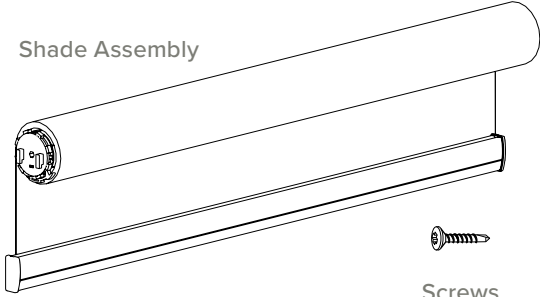
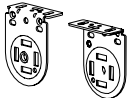
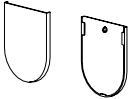
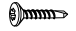



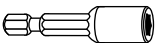
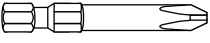

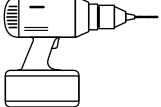
INSTALLATION INSTRUCTIONS

Rollashade.com
info@rollashade.com
951.245.5077

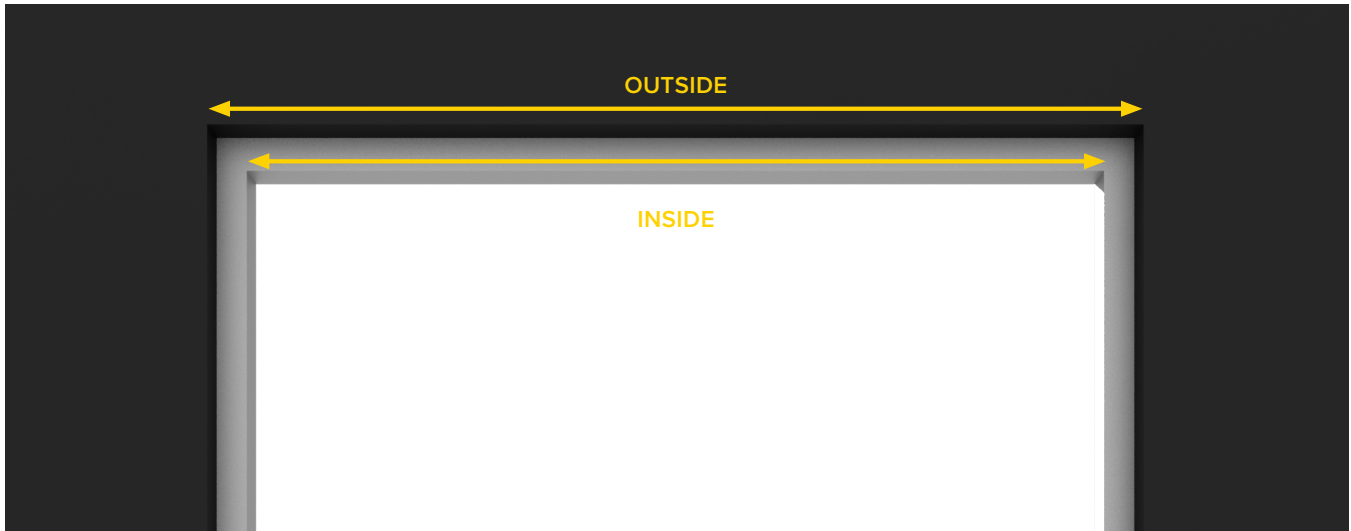
© Copyright Roll-A-Shade® Inc. All Rights Reserved.



CORDLESS | OPEN ROLL APPLICATION

HARDWARE INCLUDED	TOOLS SUPPLIED	TOOLS REQUIRED
<p data-bbox="175 369 360 399">Shade Assembly</p>  <p data-bbox="721 340 847 436">Brackets</p>  <p data-bbox="721 449 834 478">Bracket Covers</p>  <p data-bbox="581 558 656 588">Screws</p> 	 <p data-bbox="961 390 1107 420">Allen Wrench</p>  <p data-bbox="961 512 1107 541">Spanner Tool</p>  <p data-bbox="961 676 1107 705">Tension Lock</p>	 <p data-bbox="1243 319 1412 348">3/8" Hex Head</p>  <p data-bbox="1250 411 1406 441">Phillips Head</p>  <p data-bbox="1260 474 1396 504">1/8" Drill Bit</p>  <p data-bbox="1302 634 1351 663">Drill</p>

1 INSIDE OR OUTSIDE APPLICATION



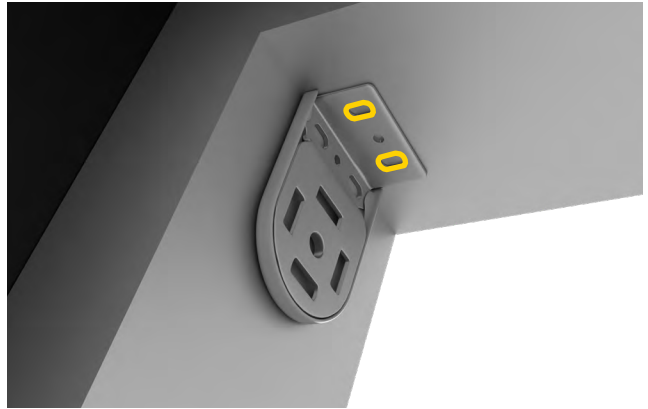
2 MOUNTING LOCATION

Place your first bracket in its mounting location and mark the screw holes. Place your brackets in its mounting location and repeat the process.

A



B



C



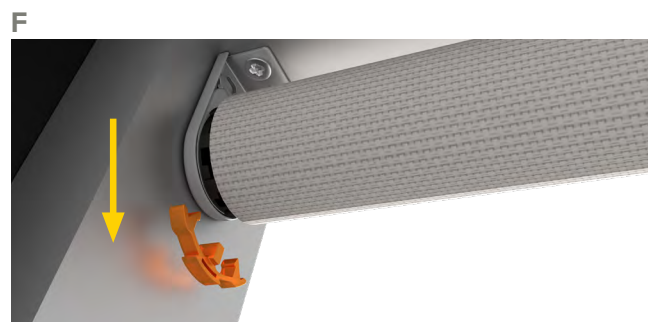
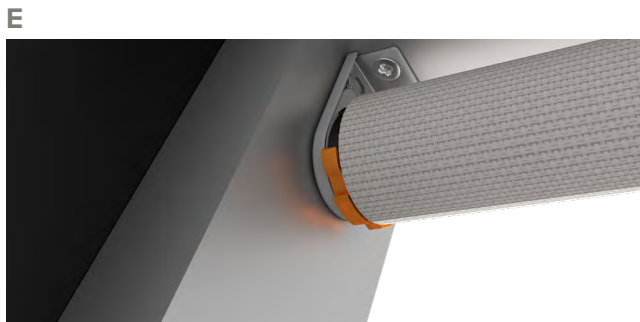
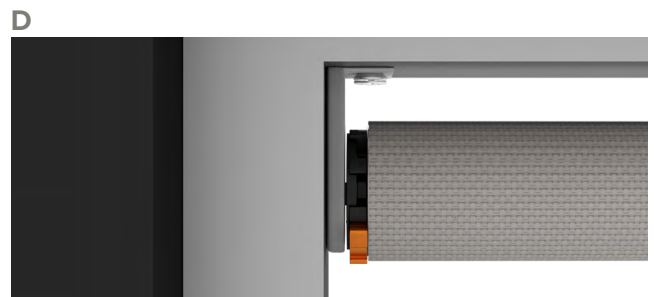
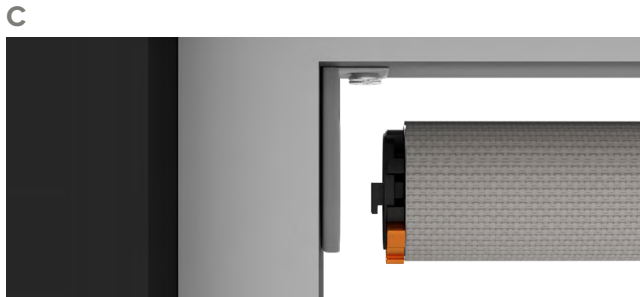
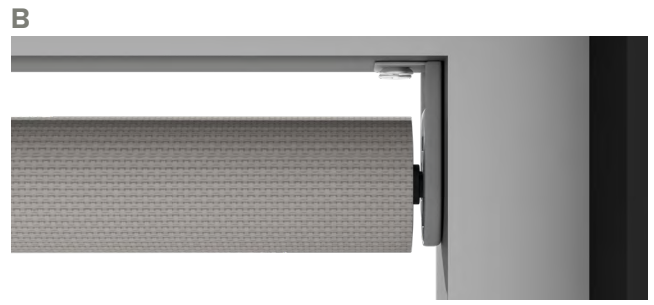
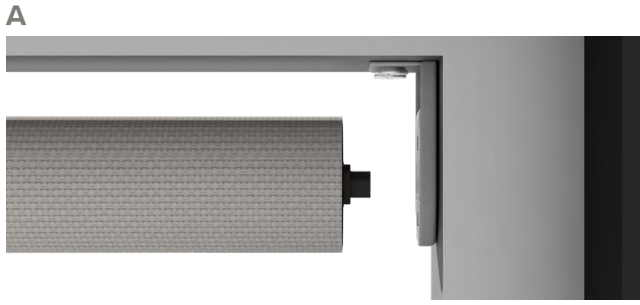
3 SCREW INSTALLATION

Next, pre-drill your screw holes using a 1/8" drill bit. Install the brackets with the provided screws using the phillips head driver.



4 SHADE INSTALLATION

A-B Attach Idler side. **C-D** Attach control side. **E-F** Remove pre-tension clip.



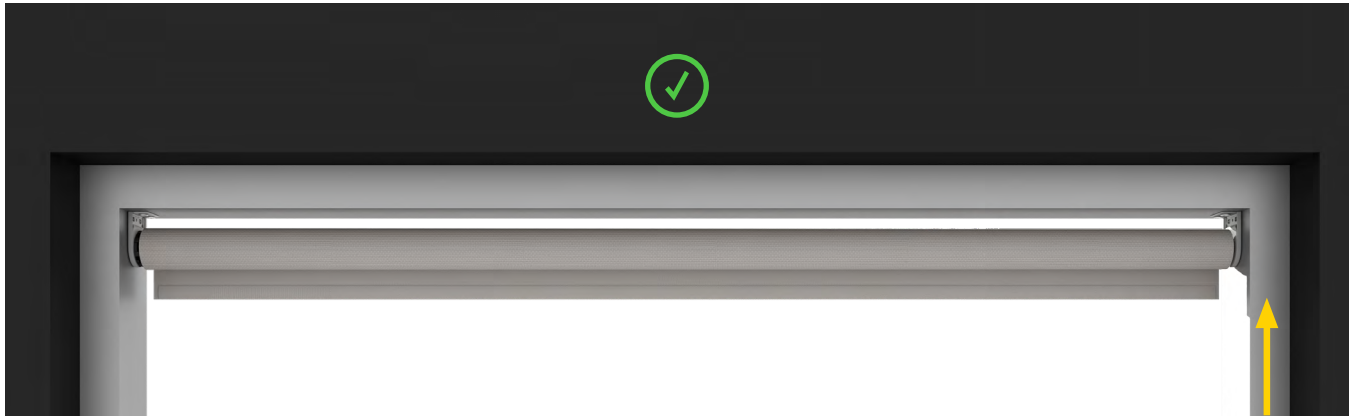
5 PRE-TENSION CHECKS

CHECK FUNCTIONALITY OF PRE-TENSIONED SHADE.

A Pull Bottom Rail down to bottom location. **B** Push the Bottom Rail up to top position.

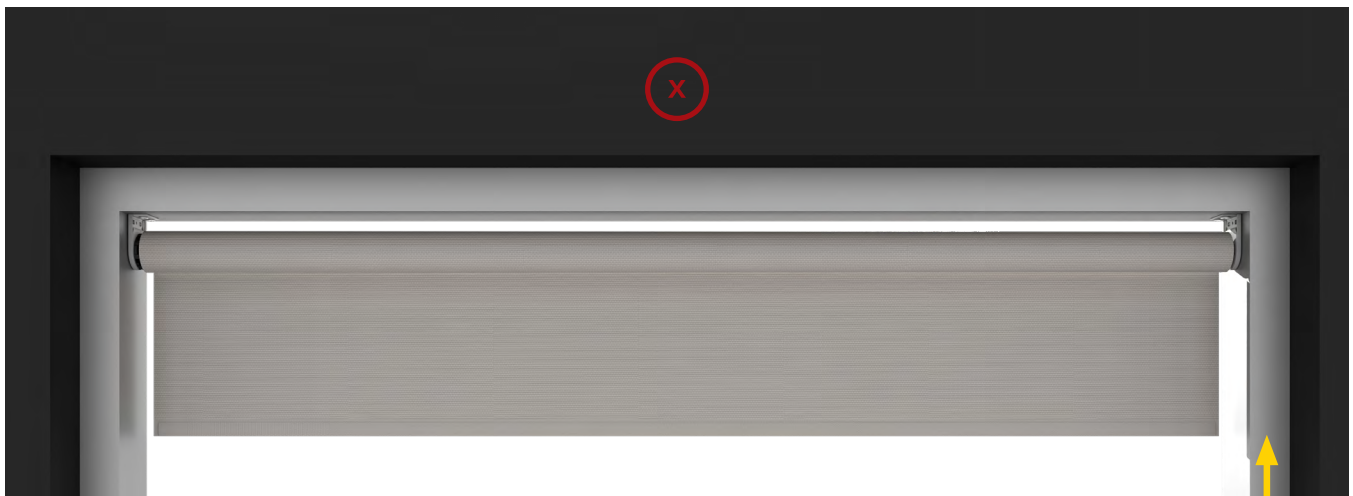


C If Bottom Rail raises at the desired speed, the correct number of pre-turns have been assigned.



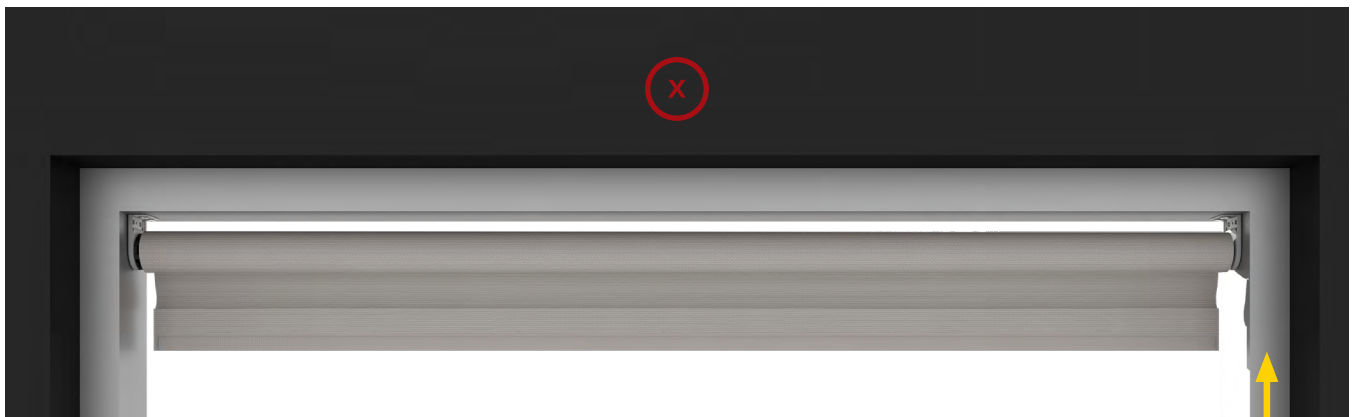
✓ Proceed to setting limits.

D If shade slows or falls from desired position then not enough pre-turns have been applied.



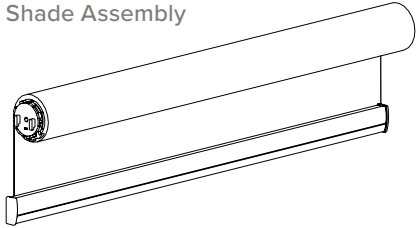
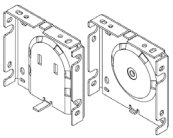


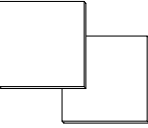




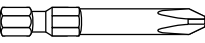

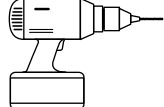
+ Add more pre-turns or move slider to lower number changing the spring size.

E Fast or automatic raising of the shade from desired position indicates excessive pre-turns.

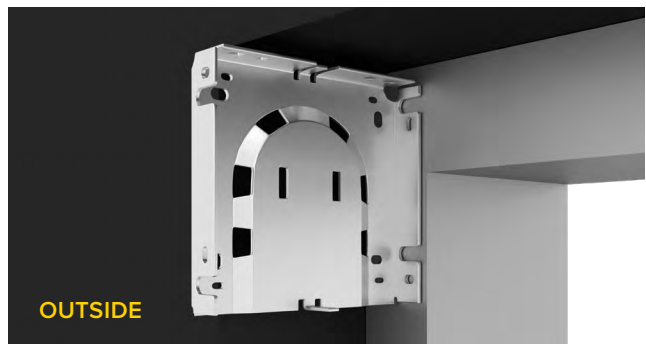
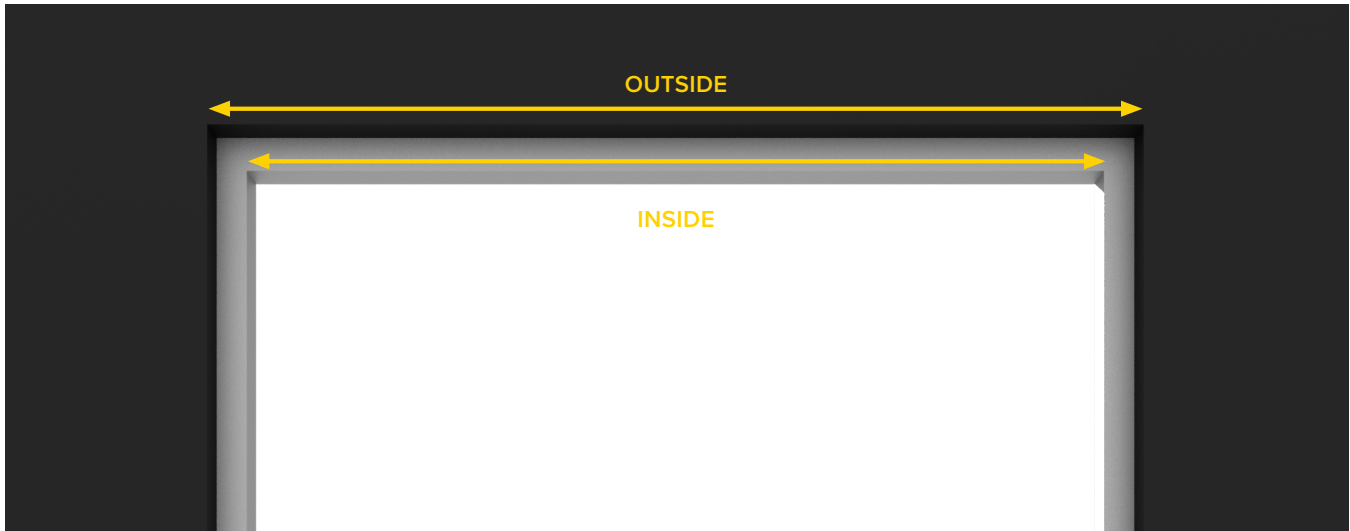


- Remove pre-turns or move slider to higher number changing the spring size.
IF ADJUSTMENT IS NEEDED SEE PAGE 21-22

CORDLESS | 4" BOTTOM FASCIA APPLICATION

HARDWARE INCLUDED	TOOLS SUPPLIED	TOOLS REQUIRED
<p data-bbox="178 300 365 325">Shade Assembly</p>  <p data-bbox="649 315 820 451">Brackets</p>  <p data-bbox="211 577 284 598">Screws</p>  <p data-bbox="341 535 657 630">Bracket Covers</p>  <p data-bbox="706 514 852 640">Bracket Covers</p> 	<p data-bbox="950 294 1112 367">Allen Wrench</p>  <p data-bbox="958 451 1128 493">Spanner Tool</p>  <p data-bbox="950 556 1120 661">Tension Lock</p> 	<p data-bbox="1242 262 1404 304">3/8" Hex Head</p>  <p data-bbox="1226 357 1429 399">Phillips Head</p>  <p data-bbox="1226 451 1429 493">1/8" Drill Bit</p>  <p data-bbox="1242 514 1404 619">Drill</p> 

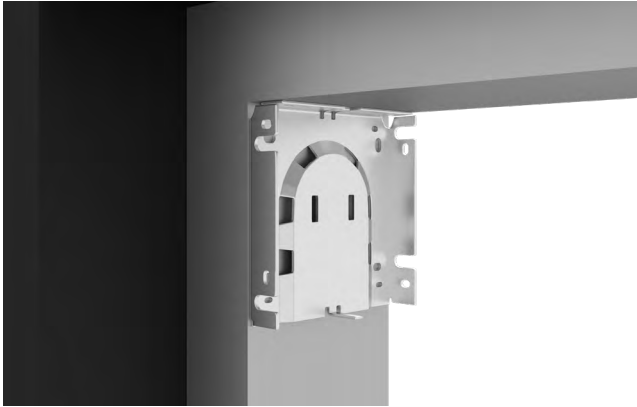
1 INSIDE OR OUTSIDE APPLICATION



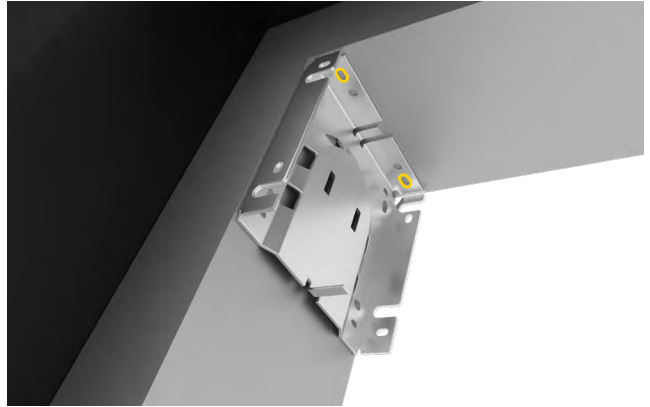
2 MOUNTING LOCATION

Place your first bracket in its mounting location and mark the screw holes. Place your brackets in its mounting location and repeat the process.

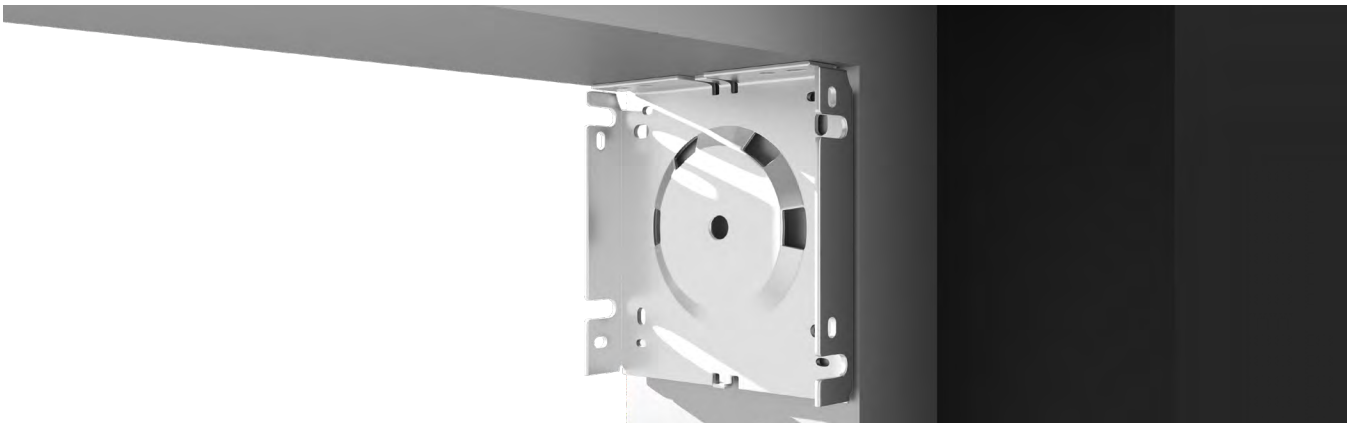
A



B

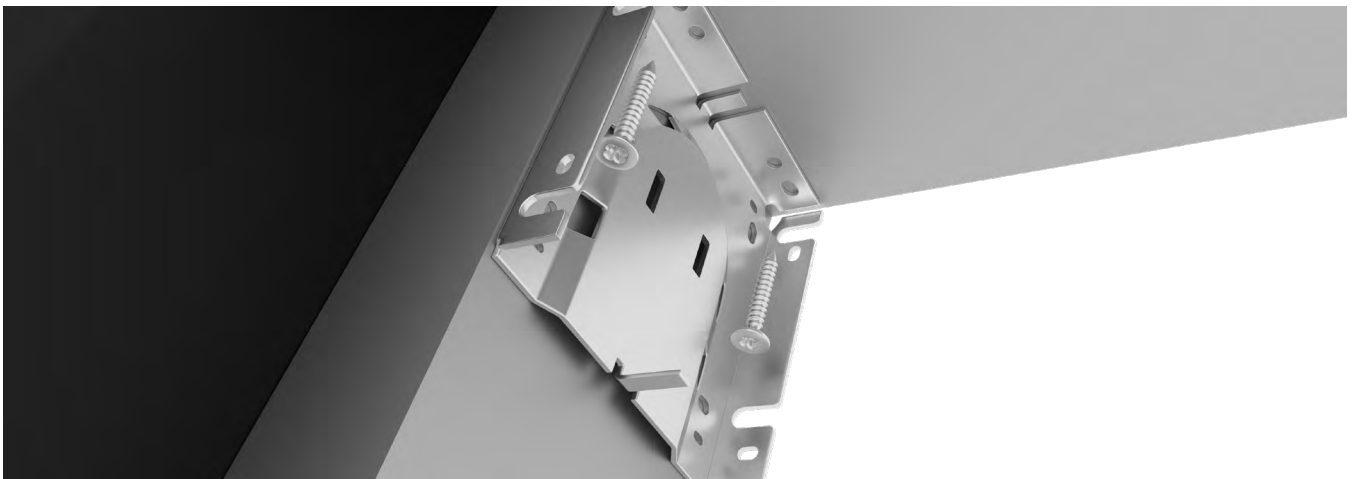


C



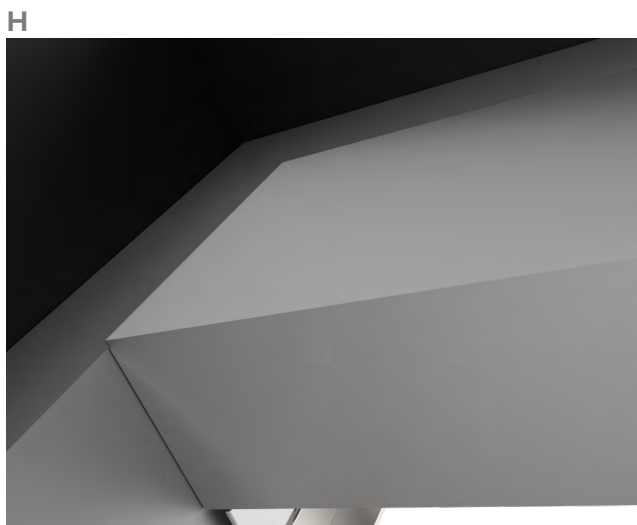
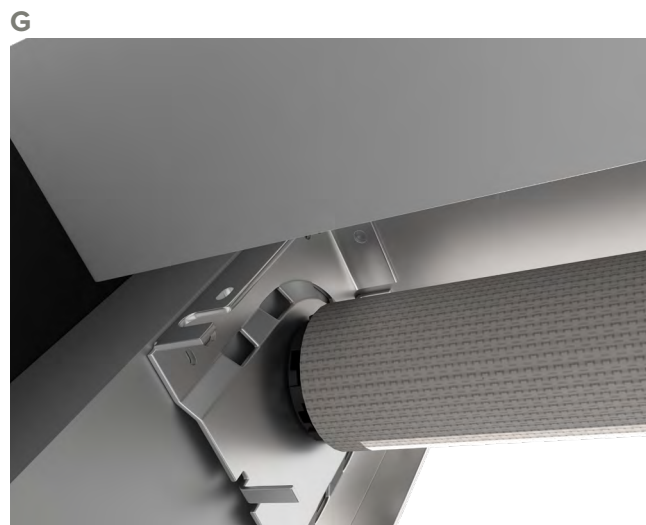
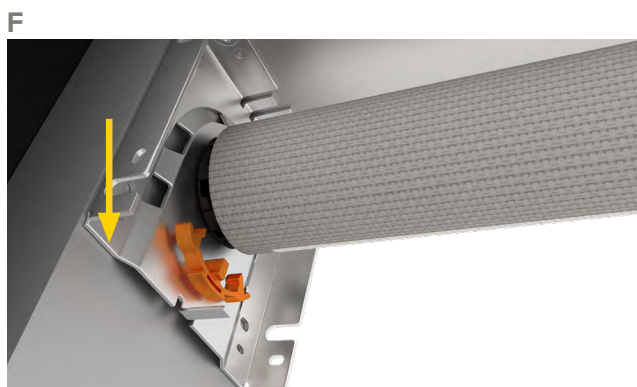
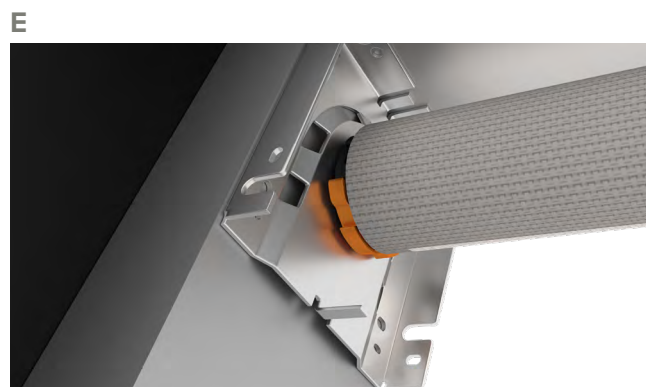
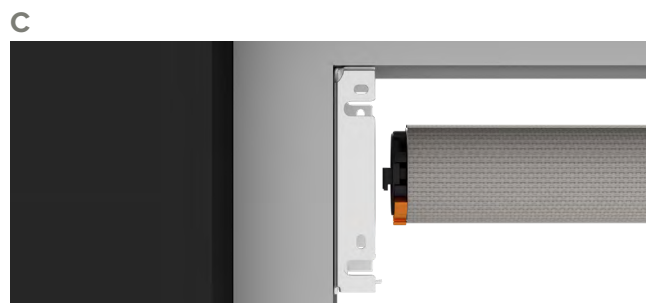
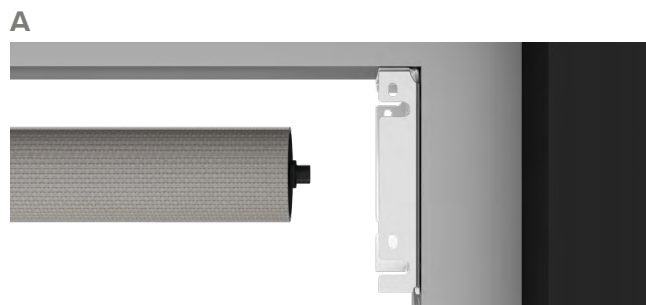
3 SCREW INSTALLATION

Next, pre-drill your screw holes using a 1/8" drill bit. Install the brackets with the provided screws using the phillips head driver.



4 SHADE INSTALLATION

A-B Attach Idler side. **C-D** Attach control side. **E-F** Remove pre-tension clip. **G-H** Insert fascia.



5 PRE-TENSION CHECKS

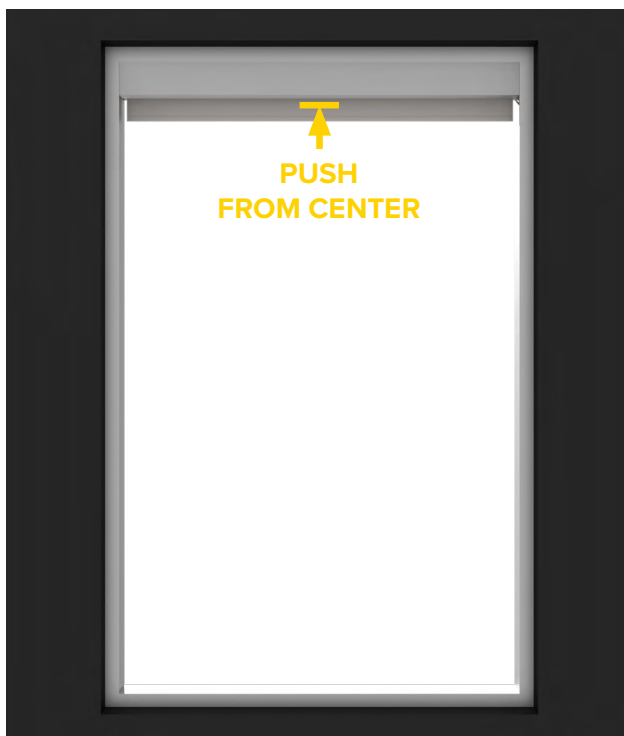
CHECK FUNCTIONALITY OF PRE-TENSIONED SHADE.

A Pull Bottom Rail down to bottom location. **B** Push the Bottom Rail up to top position.

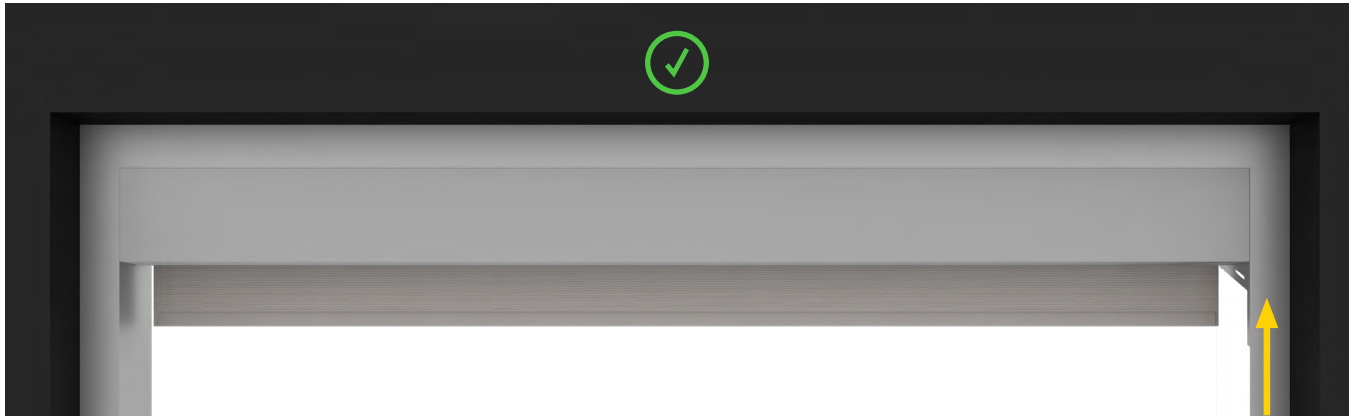
A



B

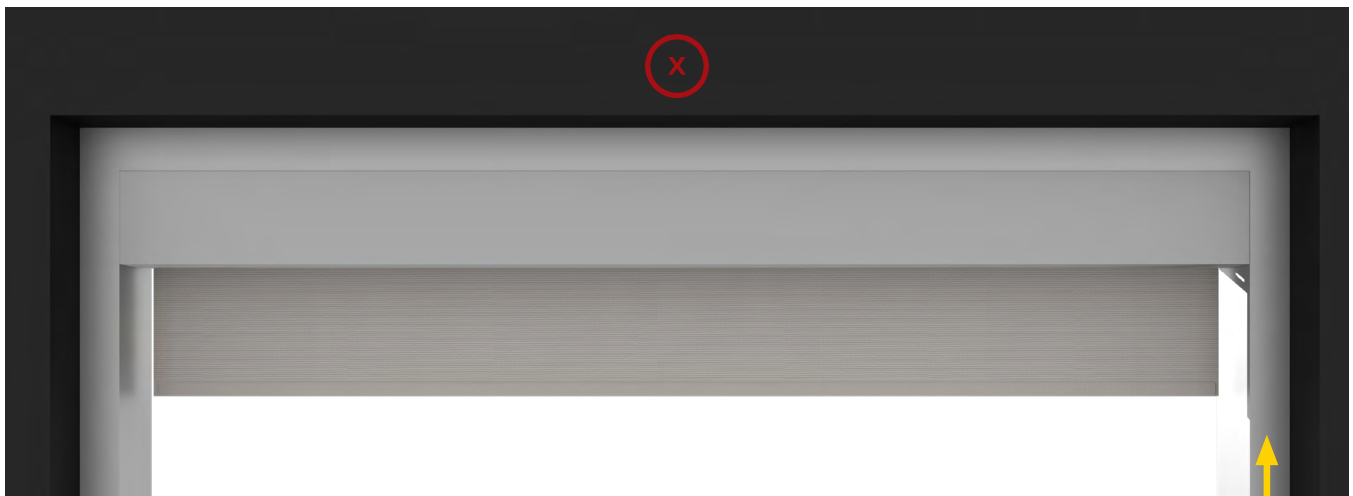


C If Bottom Rail raises at the desired speed, the correct number of preturns have been assigned.



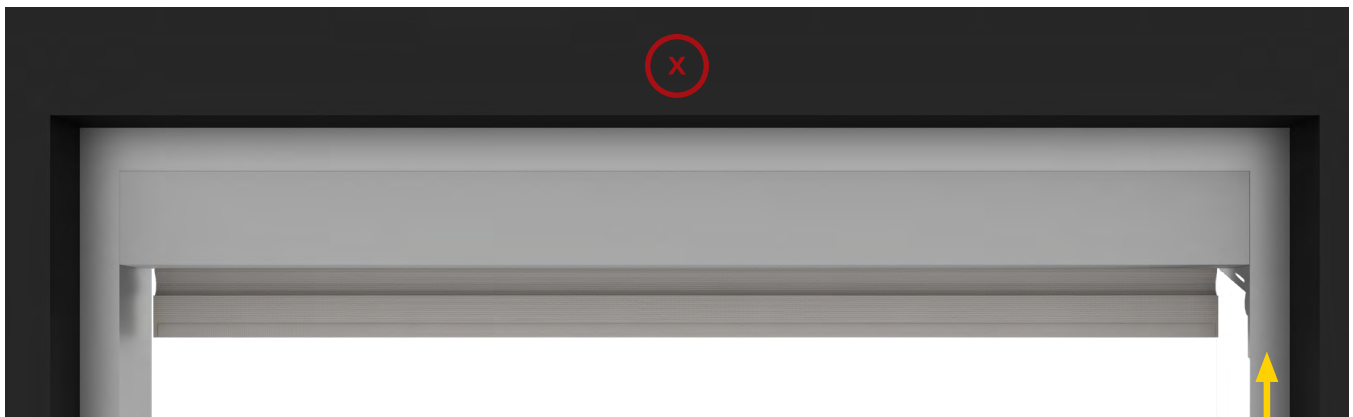
✓ Proceed to setting limits.

D If shade slows or falls from desired position then not enough pre-turns have been applied.



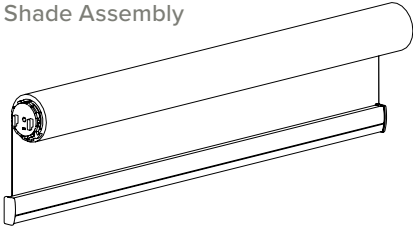
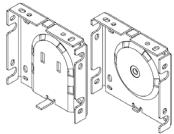


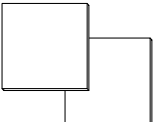



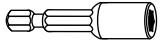
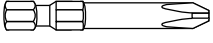

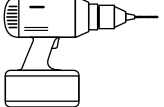
⊕ Add more pre-turns or move slider to lower number changing the spring size.

E Fast or automatic raising of the shade from desired position indicates excessive pre-turns.

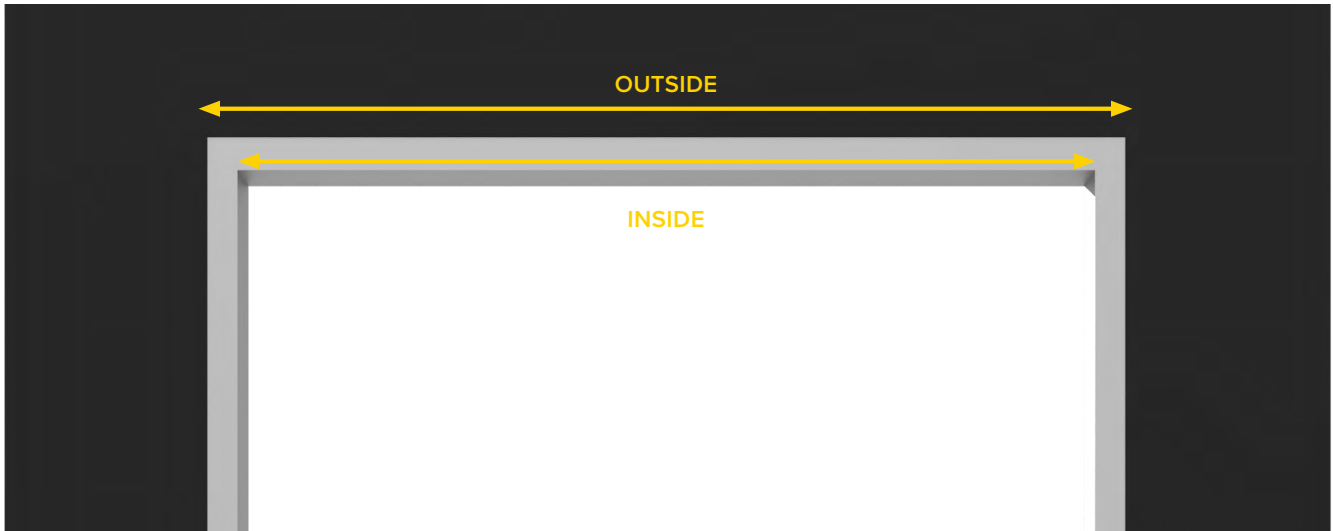


⊖ Remove pre-turns or move slider to higher number changing the spring size.
IF ADJUSTMENT IS NEEDED SEE PAGE 21-22

CORDLESS | 4" TOP FASCIA APPLICATION

HARDWARE INCLUDED	TOOLS SUPPLIED	TOOLS REQUIRED
<p data-bbox="180 300 363 327">Shade Assembly</p>  <p data-bbox="678 457 776 485">Brackets</p>  <p data-bbox="207 642 289 669">Screws</p>  <p data-bbox="418 642 581 669">Bracket Covers</p>  <p data-bbox="703 642 865 669">Bracket Covers</p> 	<p data-bbox="938 222 1133 249">Allen Wrench</p>  <p data-bbox="963 394 1109 422">Spanner Tool</p>  <p data-bbox="963 678 1109 705">Tension Lock</p> 	<p data-bbox="1247 222 1430 249">3/8" Hex Head</p>  <p data-bbox="1255 321 1417 348">Phillips Head</p>  <p data-bbox="1263 478 1393 506">1/8" Drill Bit</p>  <p data-bbox="1247 516 1409 621">Drill</p> 

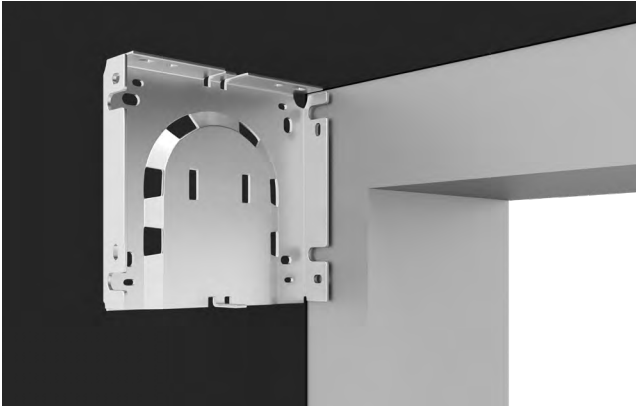
1 INSIDE OR OUTSIDE APPLICATION



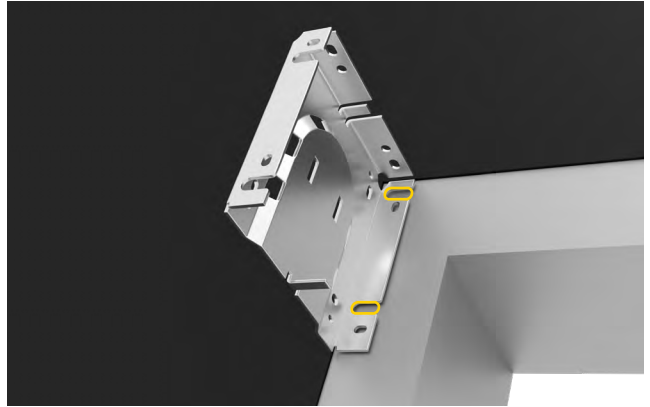
2 MOUNTING LOCATION

Place your first bracket in its mounting location and mark the screw holes. Place your brackets in its mounting location and repeat the process.

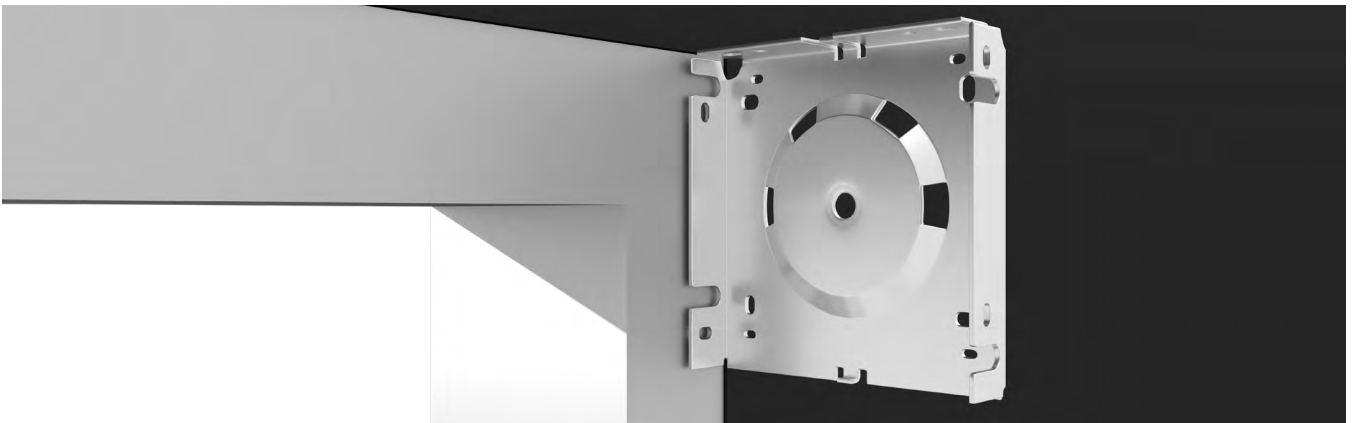
A



B

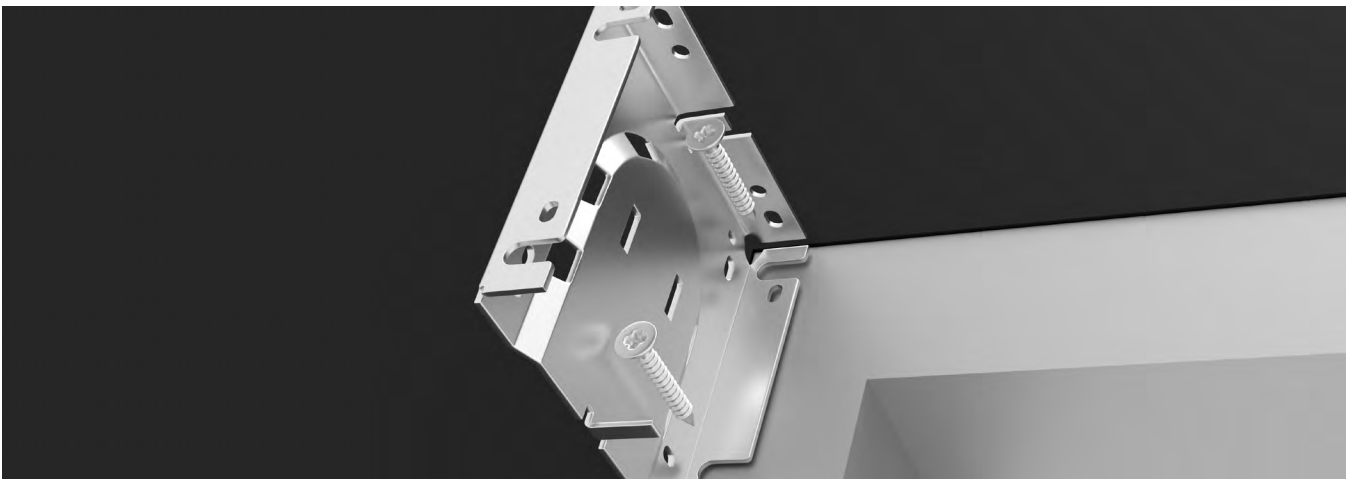


C



3 SCREW INSTALLATION

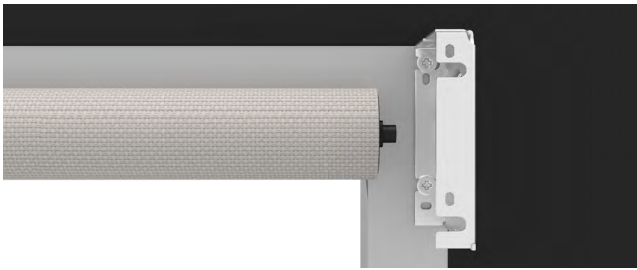
Next, pre-drill your screw holes using a 1/8" drill bit. Install the brackets with the provided screws using the phillips head driver.



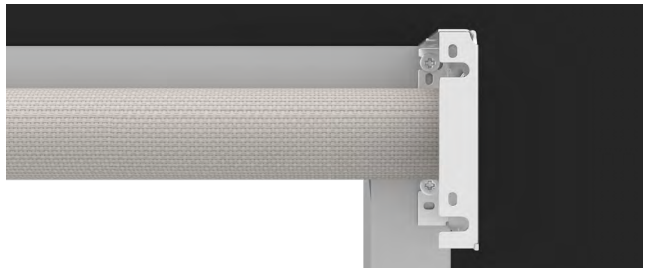
4 SHADE INSTALLATION

A-B Attach Idler side. **C-D** Attach control side. **E-F** Remove pre-tension clip. **G-H** Insert fascia. **I-J** Insert bracket covers.

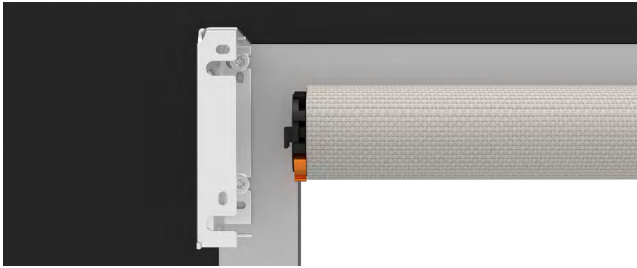
A



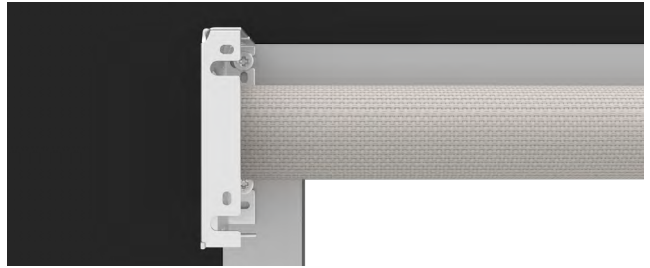
B



C



D



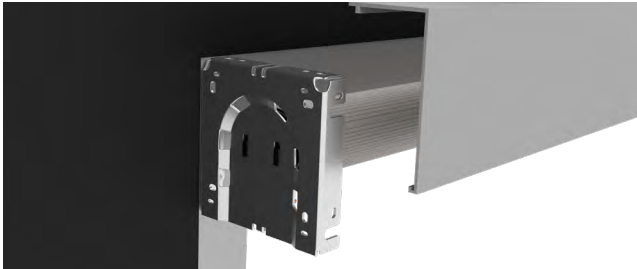
E



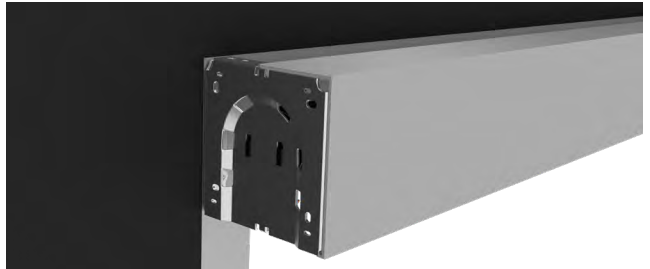
F



G



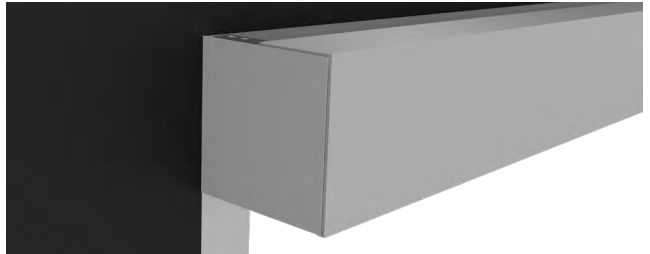
H



I



J



5 PRE-TENSION CHECKS

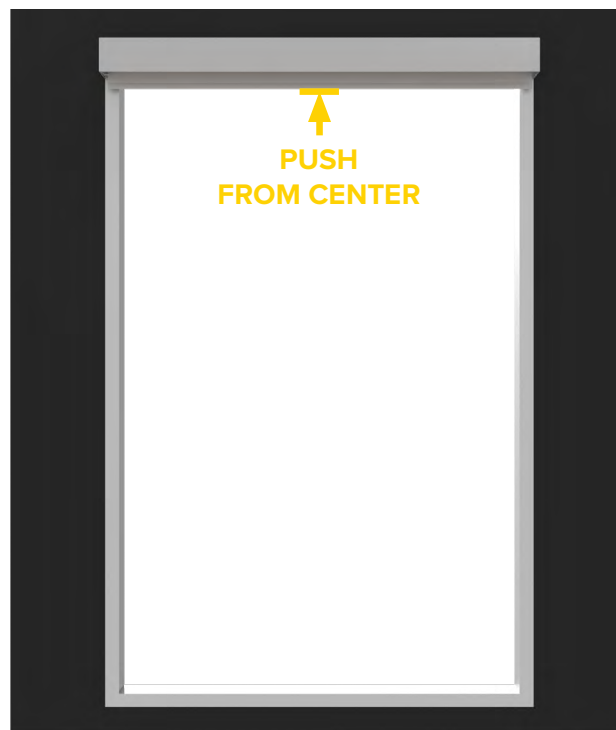
CHECK FUNCTIONALITY OF PRE-TENSIONED SHADE.

A Pull Bottom Rail down to bottom location. **B** Push the Bottom Rail up to top position.

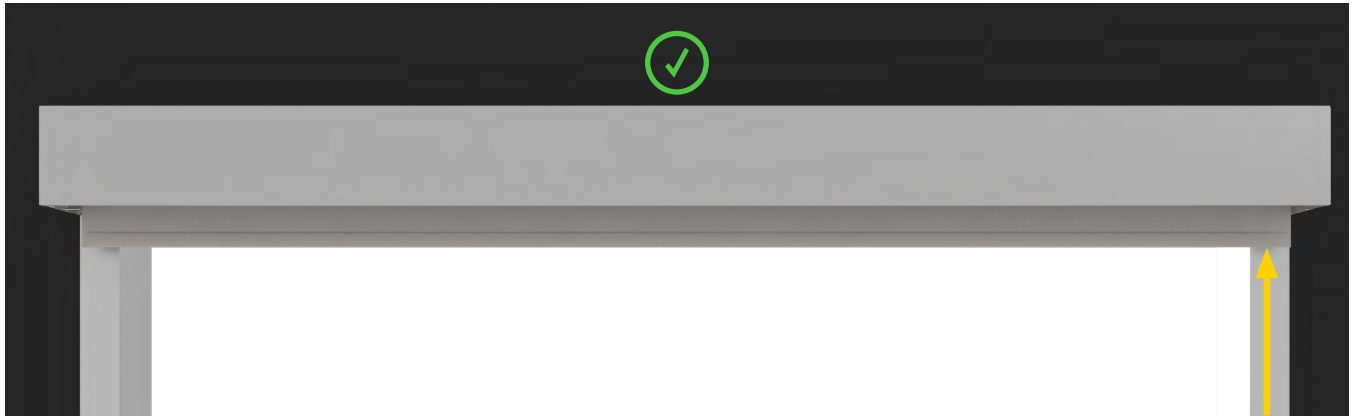
A



B

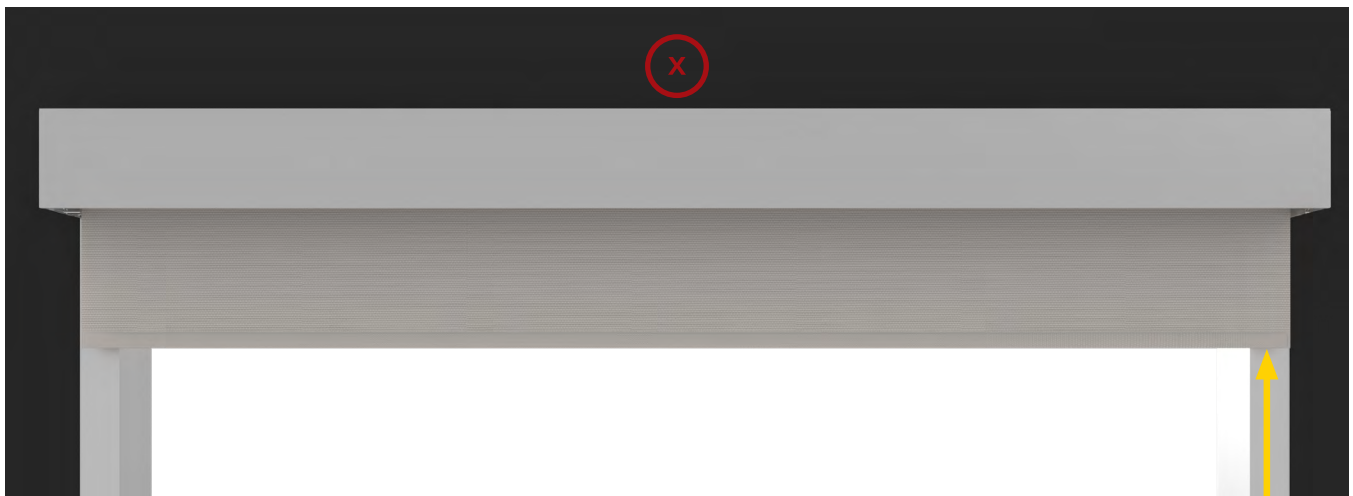


C If Bottom Rail raises at the desired speed, the correct number of preturns have been assigned.



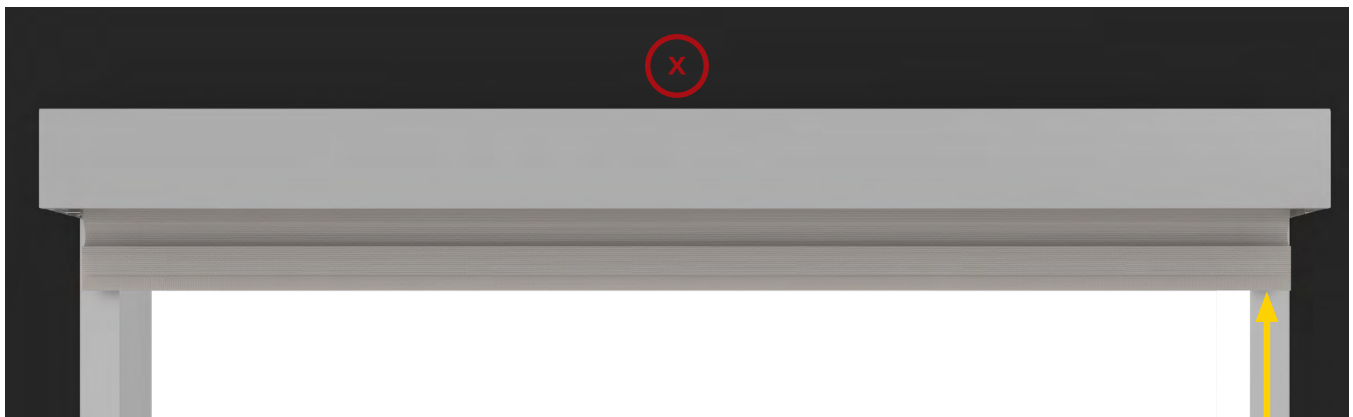
✓ Proceed to setting limits.

D If shade slows or falls from desired position then not enough pre-turns have been applied.



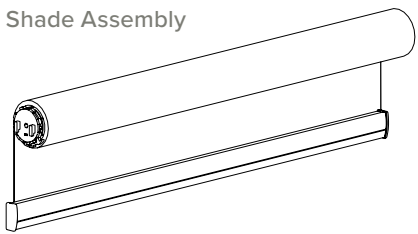
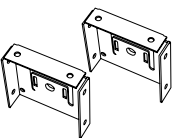
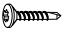

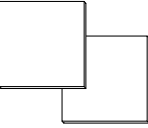

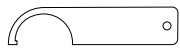


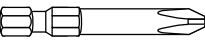

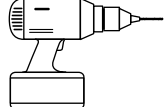
⊕ Add more pre-turns or move slider to lower number changing the spring size.

E Fast or automatic raising of the shade from desired position indicates excessive pre-turns.

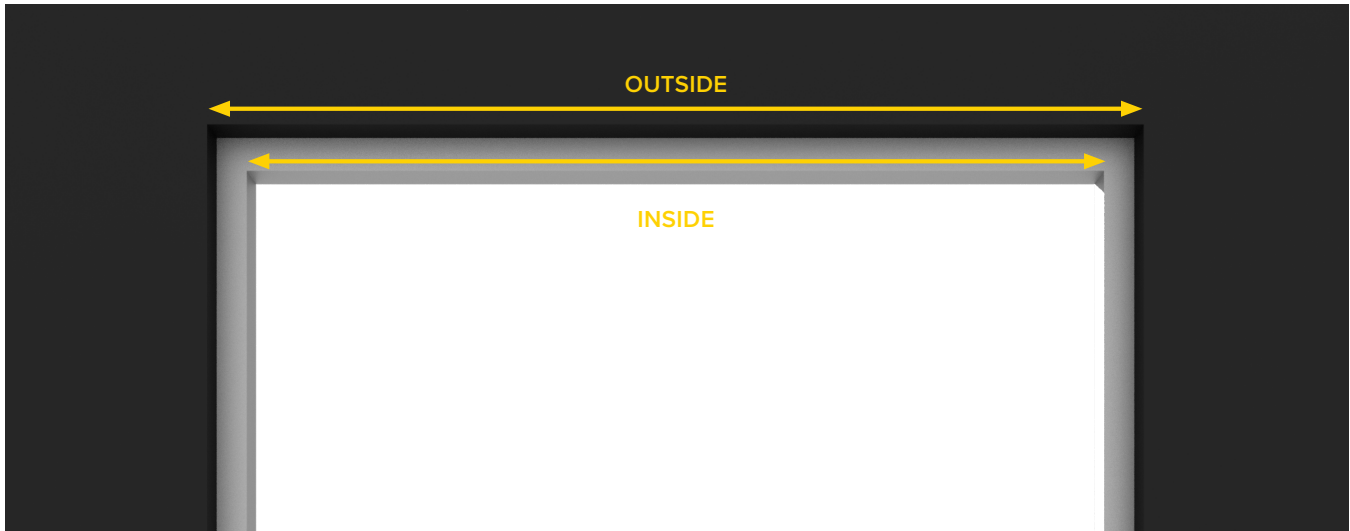


⊖ Remove pre-turns or move slider to higher number changing the spring size.
IF ADJUSTMENT IS NEEDED SEE PAGE 21-22

CORDLESS | 3" TOP FASCIA APPLICATION

HARDWARE INCLUDED	TOOLS SUPPLIED	TOOLS REQUIRED
<p>Shade Assembly</p>  <p>Brackets</p>  <p>Screws</p>  <p>Bracket Covers</p>  <p>Bracket Covers</p> 	<p>Allen Wrench</p>  <p>Spanner Tool</p>  <p>Tension Lock</p> 	<p>3/8" Hex Head</p>  <p>Phillips Head</p>  <p>1/8" Drill Bit</p>  <p>Drill</p> 

1 INSIDE OR OUTSIDE APPLICATION



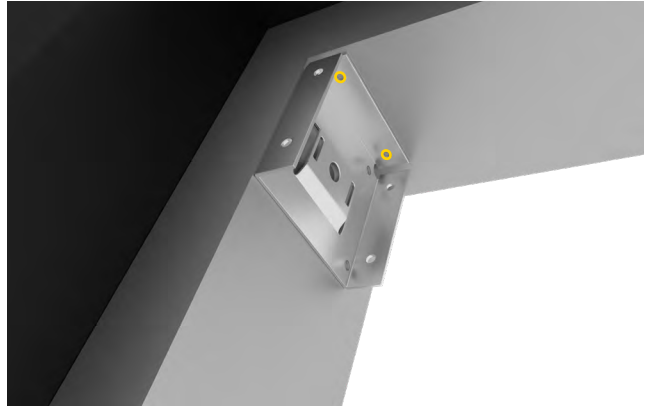
2 MOUNTING LOCATION

Place your first bracket in its mounting location and mark the screw holes. Place your brackets in its mounting location and repeat the process.

A



B



C



3 FASCIA & SCREW INSTALLATION

Next, pre-drill your screw holes using a 1/8" drill bit. Install the brackets with the provided screws using the phillips head driver.

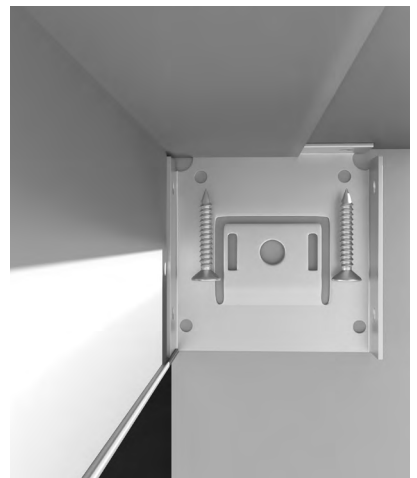
A



B

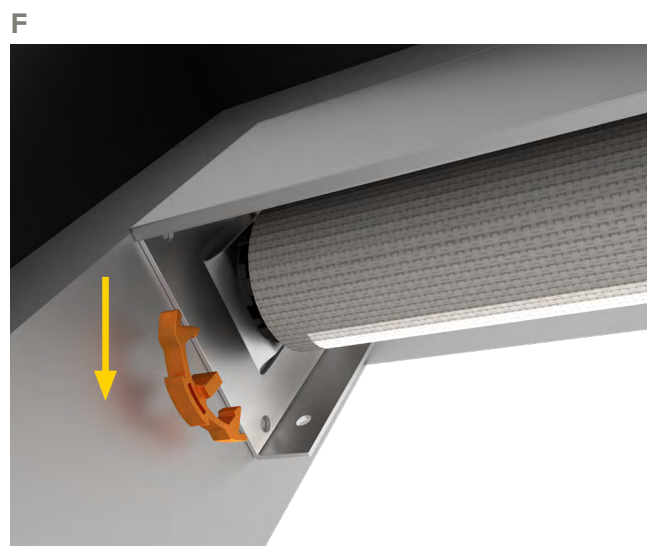
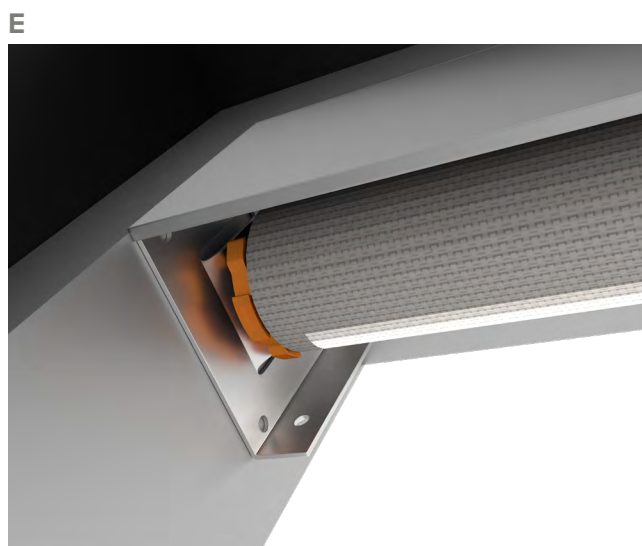


C



4 SHADE INSTALLATION

A-B Attach Idler side. **C-D** Attach control side. **E-F** Remove pre-tension clip.

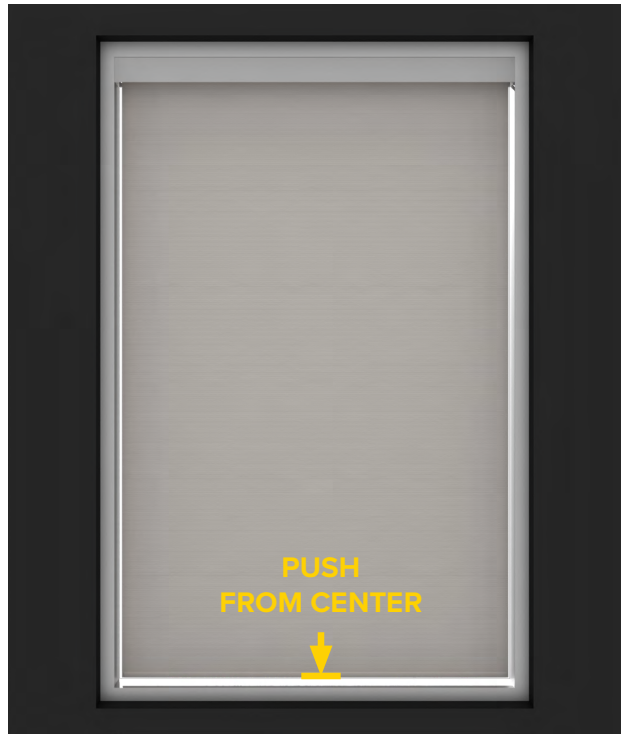


5 PRE-TENSION CHECKS

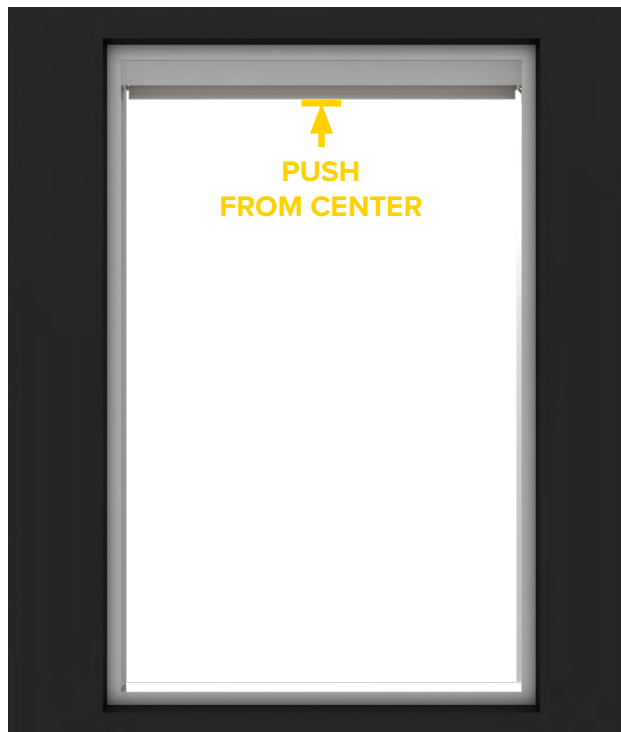
CHECK FUNCTIONALITY OF PRE-TENSIONED SHADE.

A Pull Bottom Rail down to bottom location. **B** Push the Bottom Rail up to top position.

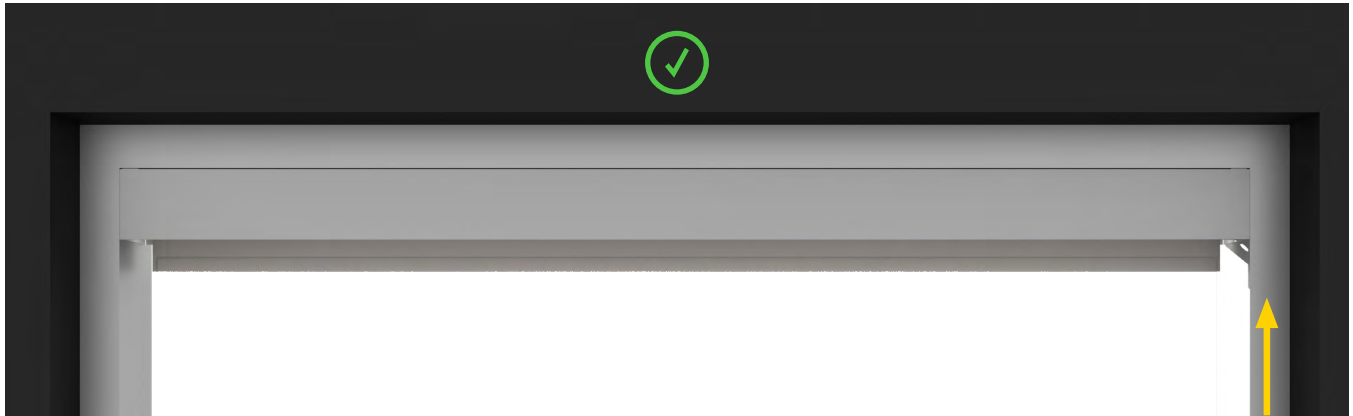
A



B

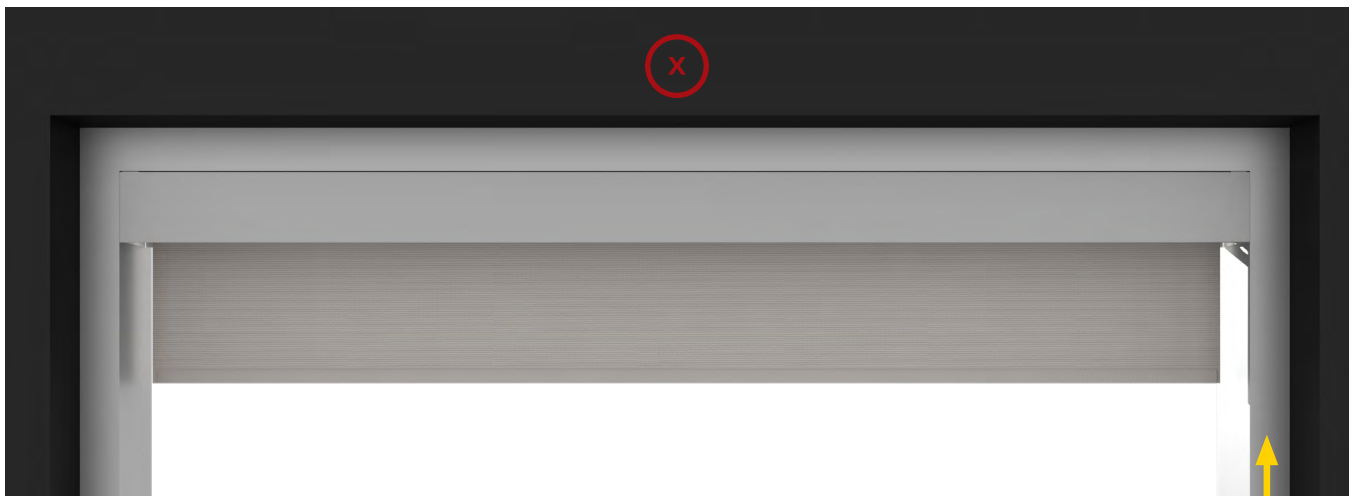


C If Bottom Rail raises at the desired speed, the correct number of pre-turns have been assigned.



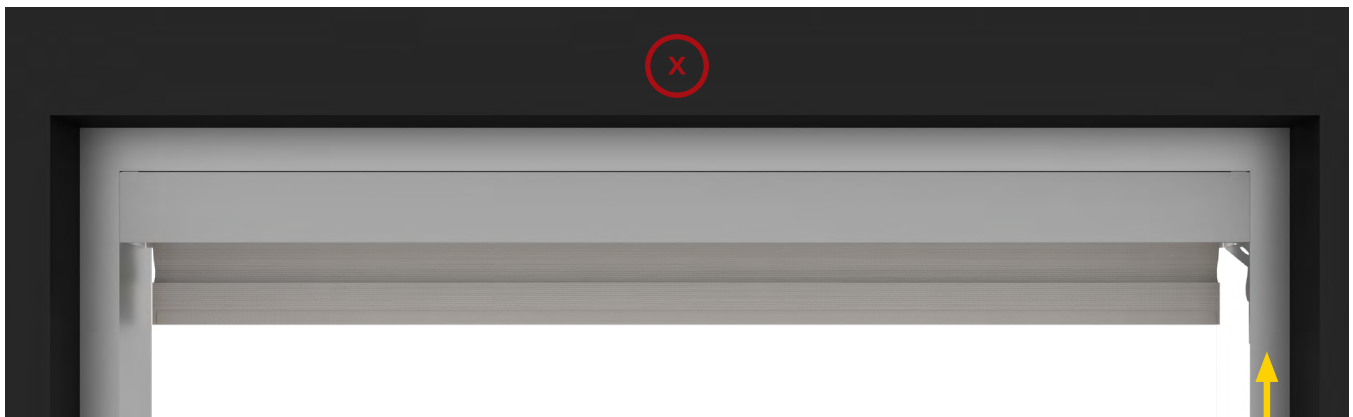
✓ Proceed to setting limits.

D If shade slows or falls from desired position then not enough pre-turns have been applied.



⊕ Add more pre-turns or move slider to lower number changing the spring size.

E Fast or automatic raising of the shade from desired position indicates excessive pre-turns.



⊖ Remove pre-turns or move slider to higher number changing the spring size.
IF ADJUSTMENT IS NEEDED SEE PAGE 21-22

CORDLESS | ADD OR REMOVE PRE-TURNS & SET LIMITS

2A ADD PRE-TURNS

Add pre turns using the spanner tool or by hand.

A



PRE-TURNS

Use the spring calculator/charts to find out the number of pre-turns required.



DIRECTION OF PRE-TURNS

LH Back Roll
Clockwise

RH Front Roll
Clockwise



2B REMOVE PRE-TURNS

Remove pre turns using the spanner tool or by hand.

B



PRE-TURNS

Use the spring calculator/charts to find out the number of pre-turns required.



DIRECTION OF PRE-TURNS

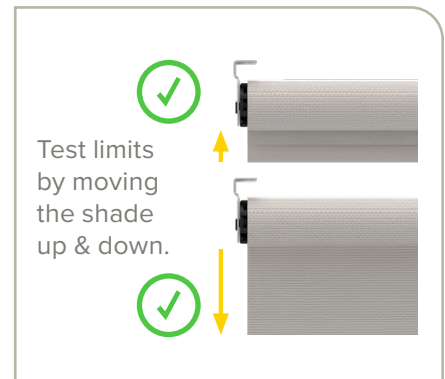
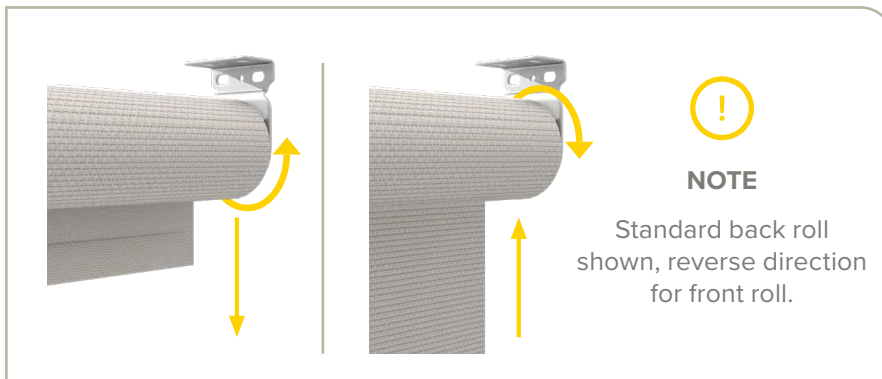
LH Back Roll
Clockwise

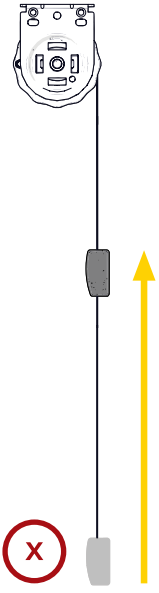
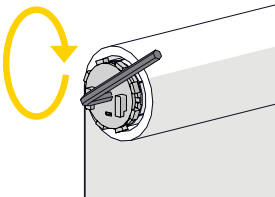
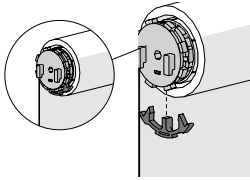
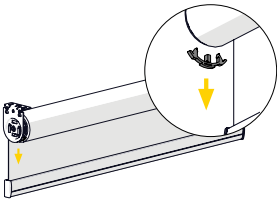
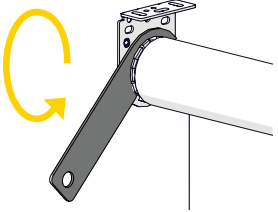
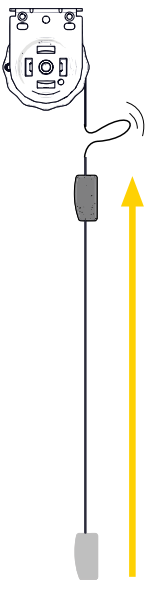
RH Front Roll
Clockwise



3 SET LIMITS

Remove pre turns using the spanner tool or by hand.



NO	PROBLEM	CAUSE	SOLUTION
1	<p>Blind can't raise up.</p> 	<p>Not enough tension or incorrect spring size.</p>	<p>1 Check the pretension guide chart with blind size to ensure pretension used is correct.</p> <p>2 Add additional pretension until blind functions correctly.</p> <hr/> <p>OPTION 1</p> <p>STEP 1 Remove the blind and use PreTension Tool (Hex) to adjust pretension to the right number:</p>  <p>STEP 2 Use the Tension Lock to lock the pretension:</p>  <p>STEP 3 Mount the shade onto the brackets and remove the lock.</p>  <p>OPTION 2</p> <p>Use the Spanner Tool to adjust tension. Doesn't require blind to be removed, however adjustment is slower.</p> 
2	<p>Blind will raise quickly.</p> 	<p>Too much tension or incorrect spring size.</p>	<p>3 Ensure the recommend mass of weigh bar and ballast is used.</p> <p>4 Check the guide chart with blind size to ensure the position of adjusting plug is correct. The position can be changed by rotating the adjusting wheel. (Note the booster need be disassembled from to operate).</p> 