



ROLL-A-SHADE®

SIGNATURE SERIES

ORIENT BLACKOUT

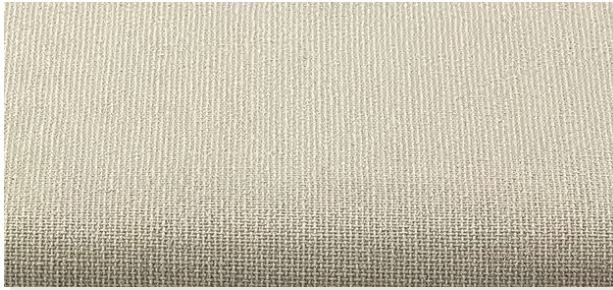
Please check specifications for color availability as not all colors are available in all openness factors.



White



Light Gray



Soft Beige



Sand



Cool Gray



Dark Gray

***Performance evaluations conducted in accordance to requirements**

TS = Solar Transmittance
 RS = Solar Reflectance
 AS = Solar Absorptance
 TV = Visual Transmittance
 GTOT Value = The total transmission value of solar energy through a combination of window and sun protection.
 FC-Value = Reduction factor (from 0-1) of the fabric concerning solar energy

The solar optical properties are used to calculate the shading coefficient. For complete technical information, current test results, performance specifications and larger samples, contact Roll-A-Shade® Incorporated.

SIGNATURE SERIES ORIENT BLACKOUT

OPENNESS FACTOR

0%

WEIGHT

13.5oz/sq yd.
 (320g/sqm) (+/- 5%)

THICKNESS

0.0185IN (0.47MM) +/-5%

WIDTHS

94.5" (240CM), 118"
 (300CM)

STANDARD ROLL LENGTH

33 lyds (30m)

COLOR NO.	COLOR	SOLAR OPTICAL PROPERTIES*				TRANSMISSION VALUE		
		TS	RS	AS	TV	GTOT VALUE	FC-VALUE	FC-CLASS
134440-240/300 FR	White	0	71	29	0	0,34	0,46	2
134504-240/300 FR	Light Gray	0	71	29	0	0,34	0,46	2
134513-240/300 FR	Soft Beige	0	71	29	0	0,34	0,46	2
134526-240/300 FR	Sand	0	71	29	0	0,34	0,46	2
134537-240/300 FR	Cool Gray	0	71	29	0	0,34	0,46	2
134506-240/300 FR	Dark Gray	0	71	29	0	0,34	0,46	2

COLOR NO.	COLOR	SINGLE GLAZING		DOUBLE GLAZING WITH AIR INTERSPACE		DOUBLE GLAZING WITH LOW EMISSION DEGREE AND ARGON INTERSPACE		TRIPLE GLAZING WITH LOW EMISSION DEGREE AND ARGON INTERSPACE	
		Ug=5,8 W/(m2K) g=0,85		Ug=2,9 W/(m2K) g=0,76		Ug=1,2 W/(m2K) g=0,59		Ug=0,8 W/(m2K) g=0,55	
		GTOT	FC	GTOT	FC	GTOT	FC	GTOT	FC
134440-240/300 FR	White	0,28	0,32	0,31	0,41	0,32	0,55	0,32	0,58
134504-240/300 FR	Light Gray	0,26	0,31	0,30	0,39	0,32	0,54	0,31	0,57
134513-240/300 FR	Soft Beige	0,26	0,31	0,30	0,39	0,32	0,54	0,31	0,57
134526-240/300 FR	Sand	0,26	0,30	0,29	0,39	0,31	0,53	0,31	0,56
134537-240/300 FR	Cool Gray	0,26	0,31	0,30	0,39	0,32	0,54	0,31	0,57
134506-240/300 FR	Dark Gray	0,26	0,30	0,30	0,39	0,32	0,53	0,31	0,57

TOTAL ENERGY PERMEABILITY DEGREE GTOT AND REDUCE FACTOR FC

FIRE CLASSIFICATION

DIN 4102 B1, EN 13773-1, CALIFORNIA U.S. TITLE 19,
 CAN/ULC-S109, NFPA701, BS 5867 PART 2

BACTERIA AND FUNGAL RESISTANCE

N/A

ENVIRONMENTAL CERTIFICATIONS

Oeko-Tex® Standard 100, REACH

COMPOSITION

100% Polyester

SPECIAL VALUES

Acrylic Foam Coating, PVC Free, Lead Free

rollashade.com | 1.888.245.5077 | ©2024 RASBOSCOVER.1



Roll-A-Shade® logo is a registered trademark of Roll-A-Shade® Inc.
 GREENGUARD is a registered trademark of GREENGUARD Environmental Institute

