



ROLL-A-SHADE®

MANUFACTURING SUN CONTROL SOLUTIONS

Premium Sun Control Solutions

TABLE OF CONTENTS

V10.15.21

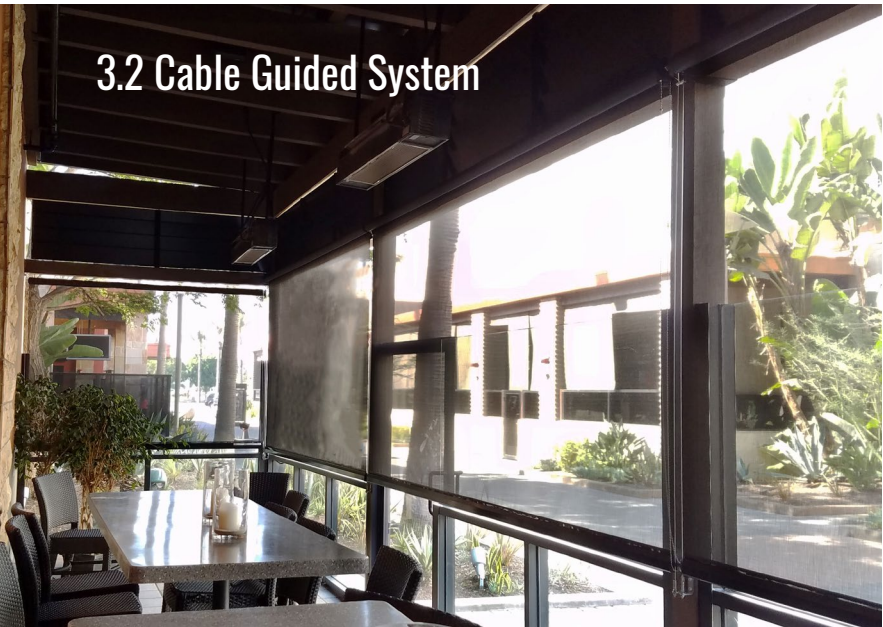


INTRODUCTION

The Company	1.4
National Account Program.....	1.5
Architectural Department.....	1.6
LEED®	1.7

INTERIOR SYSTEMS

Interior Systems Introduction	2.1
Infinity Shade System™.....	2.2-2.3
3" Top Fascia.....	2.4
4" Bottom Fascia.....	2.5
5" Dual Shade System.....	2.6
7" Dual Shade System.....	2.7
Contract Series	2.8
Cable Guided System.....	2.9
ZipStat System	2.10



EXTERIOR SYSTEMS

Exterior Systems Introduction	3.1
ZipShade®	3.2-3.5
Cable Guided System.....	3.6

CONTROLS & ACCESSORIES

Radio Controlled Shades 4.1

Intelligent Shade Network 4.2

4-Wire Motor System 4.3

Clutches 4.4

Accessories 4.5



5.2 Printed Shades

FABRICS

Choosing the Right Fabric 6.2-6.3

Fabrics 6.4-6.22

CUT SHEETS

All Cut sheets 7.1 - 7.23



4.2 Intelligent Shade Network

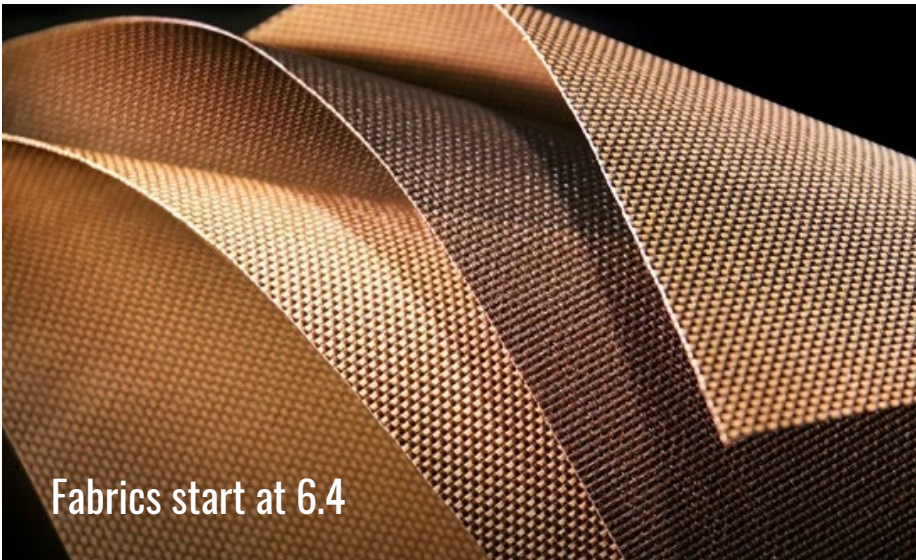
BRANDING

Branding 5.1

Printed Shades 5.2

Roll-A-Shade® Print Series 5.3

Logo Shades® 5.4



Fabrics start at 6.4

The Company



Measure | Manufacture | Install | Service

Roll-A-Shade® has been a leading manufacturer of quality roller shade products for commercial applications for over 30 years. Our business has grown as a result of our superior reputation among the finest designers, architects and contractors in the commercial industry. Our philosophy can be summed up in these words: impeccable quality, unparalleled customer service and meticulous attention to detail.

Our complete one-stop service capability, from the initial visit to obtain measurements and fabrication requirements, to the manufacturing, testing and professional installation of our shades, guarantees that you will receive the highest quality product with the utmost reliability.

Our unique “rolling system” is the strongest and most durable shade clutch mechanism available, providing a secure product even in high-use locations like banks, restaurants, hotels and hospitals. All of our hardware is available in a multitude of standard and custom colors to match any color scheme. Automatic and remote control options make our roller shades easy to use in any location.

The Roll-A-Shade® design offers the easiest installation of any window shade. Our experienced installers can put up a complete Roll-A-Shade® system or you can easily self-install with instructions provided with all orders. All of our roller shades are thoroughly tested, professionally installed by fully-insured contractors and come with a limited lifetime warranty on most parts. We ship and install throughout North America, so we can accommodate your needs with a quality Roll-A-Shade® product regardless of your location.

USA Division

West Coast Manufacturing

12101 Madera Way
Riverside, CA 92503

East Coast Manufacturing

3117 NW 25th Avenue
Pompano Beach, FL 33069

📞 951-245-5077

📠 951-245-5075

🌐 www.rollashade.com

Canada Division

112 College Street, Suite 411
Toronto, ON. M5G 1L6

📞 416-639-1365

📠 416-639-1366

🌐 www.rollashade.ca

📞 888-245-5077

National Account Program

Roll-A-Shade® provides consistent brand management throughout North America. Consistency between locations, both corporate and franchise, is of the utmost importance. Simply specify your shade system, from fabrics to colors and we will custom fabricate each and every shade to your exact specifications. Our in-house Facilities Department is integrated with procurement solutions such as Ariba®, Corrigo®, ServiceChannel®, Big Sky®, Facility Source®, Versaise®, and Expesite®. All Roll-A-Shade® products are installed by fully trained and insured professionals in all of North America.

Quality | Service | Price



What We Do for You

We're here to help you when one or more of your elevations faces the sun. Direct sunlight can contribute to many issues:

- Extraordinary heat for your customers
- Uncomfortable glare for employees and customers
- High energy costs due to intense heat gain



What You Need to Do

Send us a request for shades and we will dispatch a technician to measure your location. After measurements are received, we'll send you a proposal. Once approved, leave the rest up to us!

If you need budgeting quotes, send us elevation plans or estimated window sizes and we will provide a preliminary proposal.

We are not a dealer, so you will not pay middle-man pricing!



Our Process

- We conduct a **field measure**
- We **manufacture** the shades
- We **install** the shades
- Plus, we **service** all of your shades, when necessary

All of our technicians are trained, insured professionals, so you get the best service possible!



Architectural Department

Roll-A-Shade® Architectural manages the large contract and specialty commercial projects nationwide. The Architectural team has developed strong relationships within the Architectural & Design community all over North America, working closely with firms from the early design phases all the way to project completion. Utilizing the industry's latest design software, Roll-A-Shade® Architectural offers professional submittal packages, including full system overviews and wiring diagrams for motorized applications. As with every Roll-A-Shade® project, the architectural team offers post-installation service and support throughout the duration of the Roll-A-Shade® manufacturer's warranty.

Specifications are available upon request. Please refer to section 7 for Cut Sheets.



v4 New Construction, Core and Shell, Schools and Healthcare






***Key:**

NC = New Construction

CS = Core + Shell

S = School

HC = Healthcare

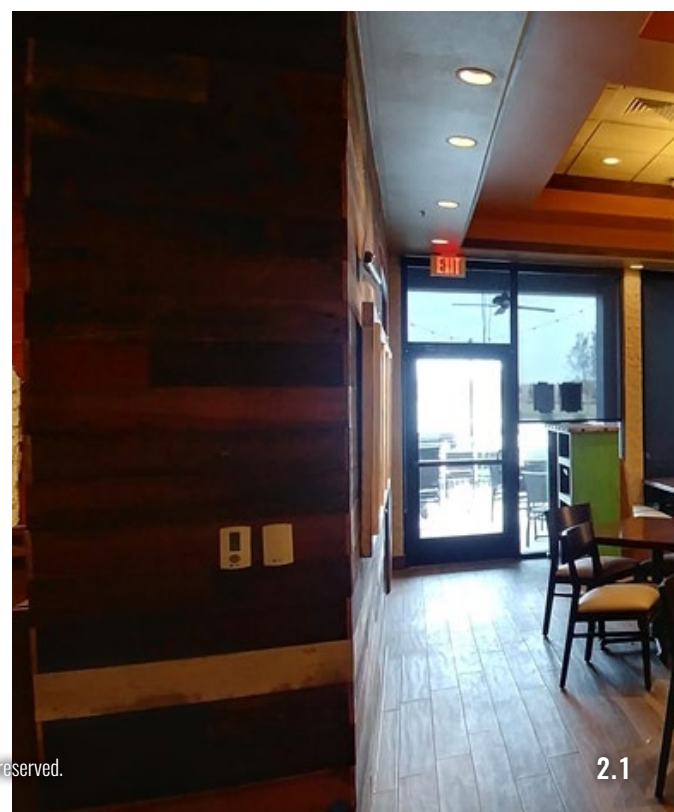
Category	Potential Points	Roll-A-Shade® Contribution
 Energy and Atmosphere Optimize Energy Performance	NC, CS: 1-18 S: 1-16 HC: 1-20	<p>The intent is to achieve increasing levels of energy performance above the baseline in the prerequisite standard to reduce environmental and economic impacts associated with excessive energy use. Roll-A-Shade's automated interior shade systems are designed to automatically adjust to the position of the shades incrementally on the window according to the sun's location, BTU load on the glass, building orientation, and real time climate temperature and sun sensors.</p>
 Materials and Resources Building Product Disclosure & Optimization-Material Ingredients	NC, CS, S, HC:1-2	<p>This credit considers the components with pre-consumer and post-consumer recycled content. Roll-A-Shade® sun systems use many components with recycled content. Please contact a Roll-A-Shade® representative for pre and post recycled specifications.</p>
 Indoor Environmental Quality Thermal Comfort	NC, CS, S, HC:1	<p>The intent is to promote the productivity, comfort and well-being of occupants by providing a thermally comfortable design and control. Roll-A-Shade® shade systems allow occupants to control the height of solar shades to reduce heat penetration and glare in the building.</p>
 Indoor Environmental Quality Daylight	NC, CS, S: 1-3, HC:1-2	<p>The intent of this credit is to provide building occupants with a connection between indoor spaces and the outdoors through the introduction of daylight and views by using Roll-A-Shade® shade systems. Daylighting design involves a balance of heat gain and loss, glare control, and contrast ratios for visual quality.</p>
 Indoor Environmental Quality Quality Views	NC, CS, S: 1 HC:1-2	<p>Provide building occupants with a connection between indoor spaces and the outdoors through the introduction of daylight into the regularly occupied areas of the building. Achieve a direct line of sight to the outdoor environment via vision glazing, between 30 in. and 90 in. above the finished floor, for building occupants in 90% of all regularly occupied areas.</p>





Interior Systems

Roll-A-Shade® offers a full line of interior roller shade systems. The various interior systems are available in a variety of control options. From manual to motorized, Roll-A-Shade® has a system to suit every application. Every shade system is manufactured using the most durable components and materials available. These commercial interior shade systems have proven to stand up against the most demanding environments including restaurants, hotels, schools, office buildings and a multitude of other industries.



Infinity Shade System™



Phifer Sheerweave® 5000 - Linen/Cream

Our Infinity Shade System™ is a sleek, modern, commercial system that has been designed to minimize light gaps and compliment modern decor. The unique, polished Infinity™ bracket features a smooth, flush finish and conceals the appearance of the clutch mechanism perfectly. This cost-effective shade solution is specially designed for 2" retail mullions. Available in two sizes and multiple colors, this shade system is ideal for a full range of sizes.

Brackets Available In The Following Colors



White



Black



Anodized



Chrome

Black Infinity Bracket

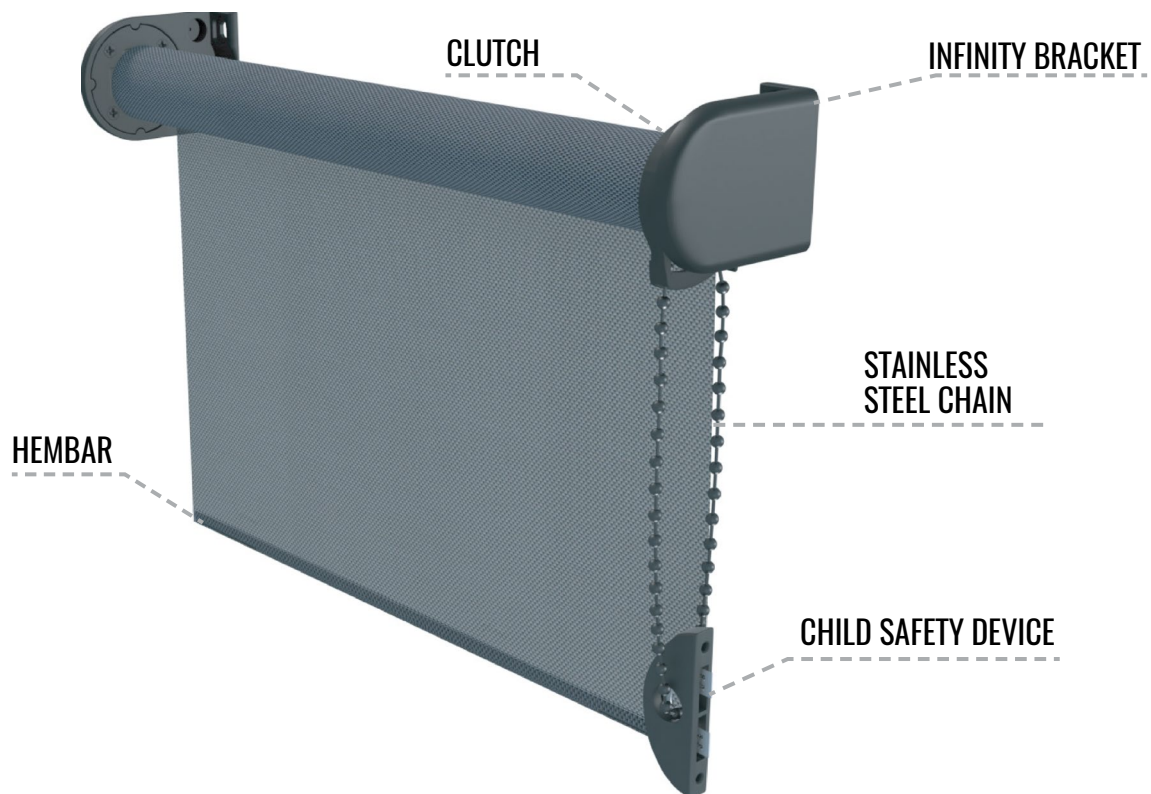


Anodized Infinity Bracket





Mermet® E-Screen 10% - White/Pearl



3" Top Fascia

MANUAL
SYSTEM

RADIO



Phifer Sheerweave® 2000 - Platinum



Phifer Sheerweave® 4100 - Greystone

The Roll-A-Shade® Top Fascia system is expertly designed to cover shade systems for a modern, polished look. Constructed of L shaped extruded aluminum, the 3" fascia panel covers the front and top of the roller tube and conceals the mounting hardware. This design protects the fabric from long term dust and dirt collection. This fascia system is designed for fast, easy and secure installation.

Brackets & Fascia Available In The Following Colors



White



Black



Bronze



Silver
Metallic



Vanilla





Phifer Sheerweave® 2390 - Oyster



The Bottom Fascia covers the front and underside of the roller shade to provide a sleek, minimal appearance. The fascia brackets are easy to mount as they are designed for outside, top and side mounting. Available in both manual and motorized options, the 4" system is perfect for large windows. When motorized, the 4" system has versatility to cover many windows by linking multiple shades together. When linking shades together, one motor can drive multiple shades making this a cost-effective motorized solution. This system can be completely concealed on all sides by requesting the 4" Bottom Fascia with Cassette.

Brackets & Fascia Available In The Following Colors



White



Black



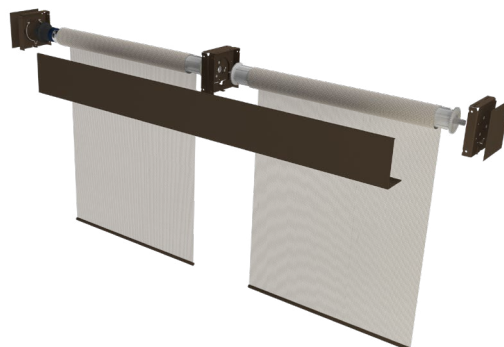
Bronze



Anodized



Vanilla



5" Dual Shade System

MANUAL
SYSTEM

RADIO

The 5" Dual Shade System features a unique top fascia system that houses two separate roller shades: one translucent shade and one black-out shade. This system is ideal for when both light-filtering and room-darkening fabrics are needed in the same window. Available in both motorized and manual options, the 5" Dual Shade System combines form and function while offering a modern, clean look.

Brackets and Fascia Available In The Following Colors



White



Black



Bronze



Anodized

TRANSLUCENT
SHADE

BLACKOUT
SHADE



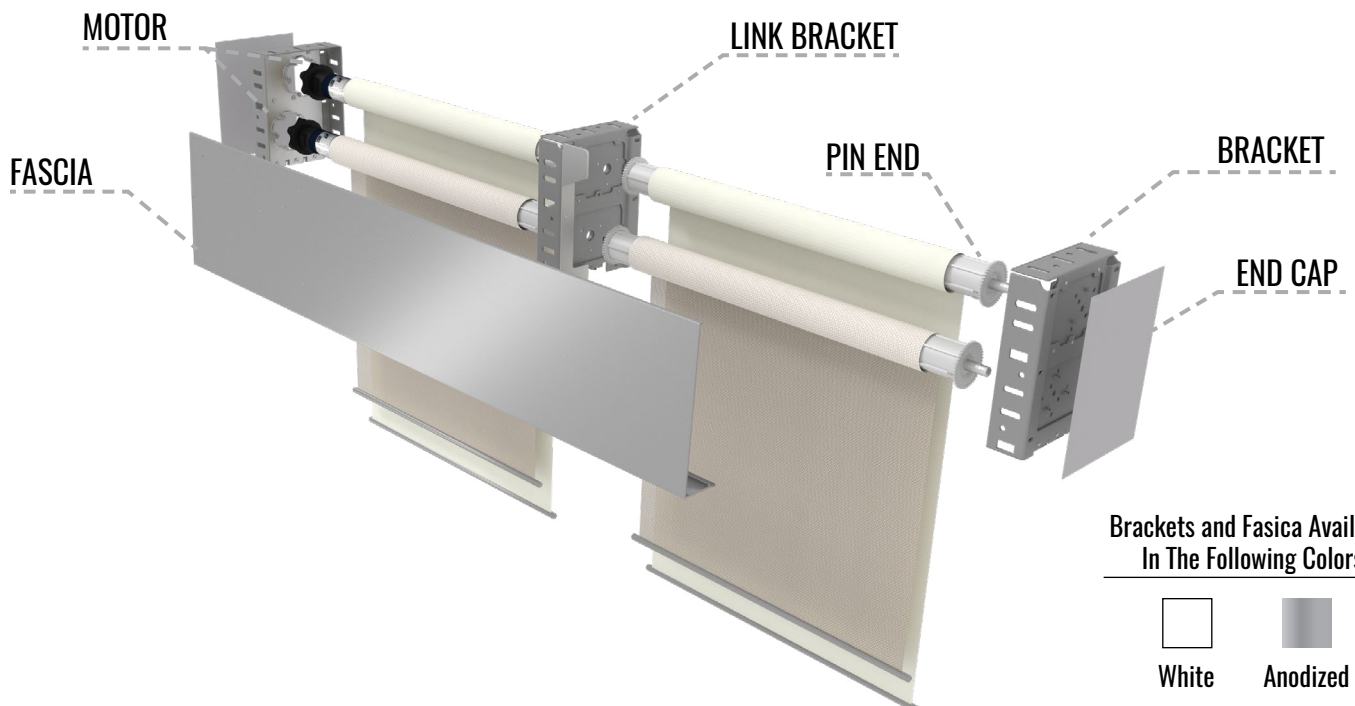
Blackout: Mermet® Avilia Twilight - Black
Solar Screen: Mermet® M-Screen 5% - Charcoal/Charcoal

7" Dual Shade System



Blackout: Phifer Sheerweave® 7500 - Mist
Solar Screen: Phifer Sheerweave® 2390 - Oyster/Pearl Gray

Available as motorized only, the heavy-duty 7" Dual Shade System is the perfect option for large windows which require both room-darkening and light-filtering shades. This system includes a 7" fascia, which conceals the roller shades for a clean and polished look. The commercial-grade 7" fascia bracket provides enough room for two large shades, and can be linked to multiple windows when desired.



Brackets and Fascia Available
In The Following Colors



White



Anodized

Contract Series

MANUAL
SYSTEM

ISN
INTELLIGENT SHADE NETWORK

4WIRE

RADIO



Phifer Sheerweave® 7000 - Cocoa

The Contract Series is ideal for facilities and rooms where light and privacy are a concern. When combined with a blackout shade the contract series encompasses all edges of the fabric providing no visual line of sight into the space. Provide any room with a stylish and functional contract series roller shade to significantly reduce light and glare when using projectors or televisions. The Contract Series system was also designed to allow shades to be integrated into the ceiling for concealment above the drop ceiling.

Brackets, Box and Channels Available In The Following Colors



White



Anodized

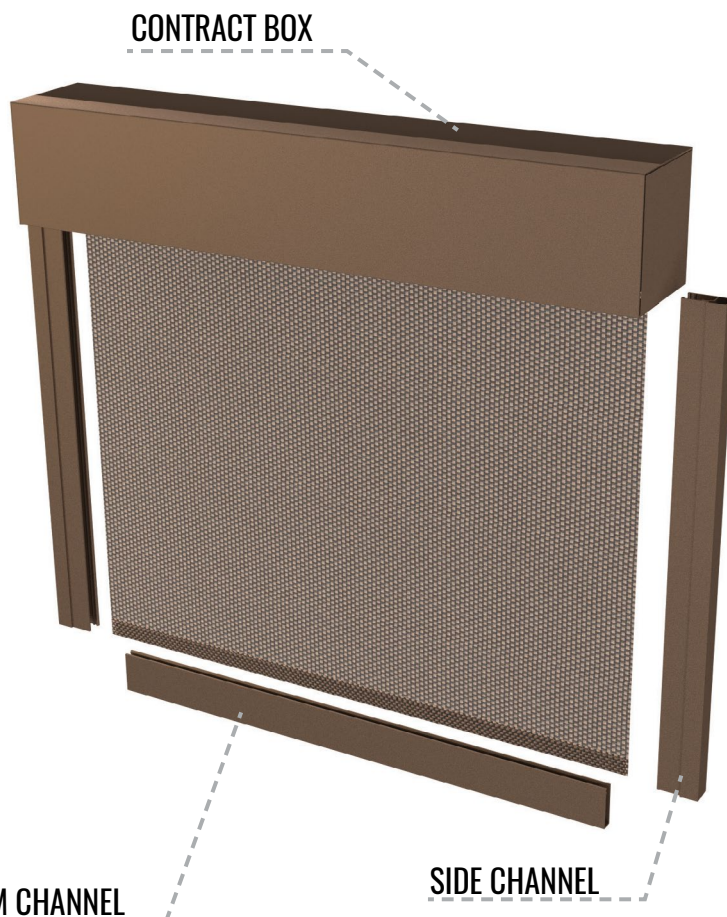


Bronze

This System is Available in:

5"

6"



Cable Guided System

The interior Cable Guided System is designed to allow shades to operate on a sloped angle. The roller shade attaches to a guided cable ensuring that the shade rolls up and down without obstruction. Made of stainless steel, the guide wires are connected to the upper bracket and to the floor or wall to ensure the shade follows the angle of the surface smoothly.

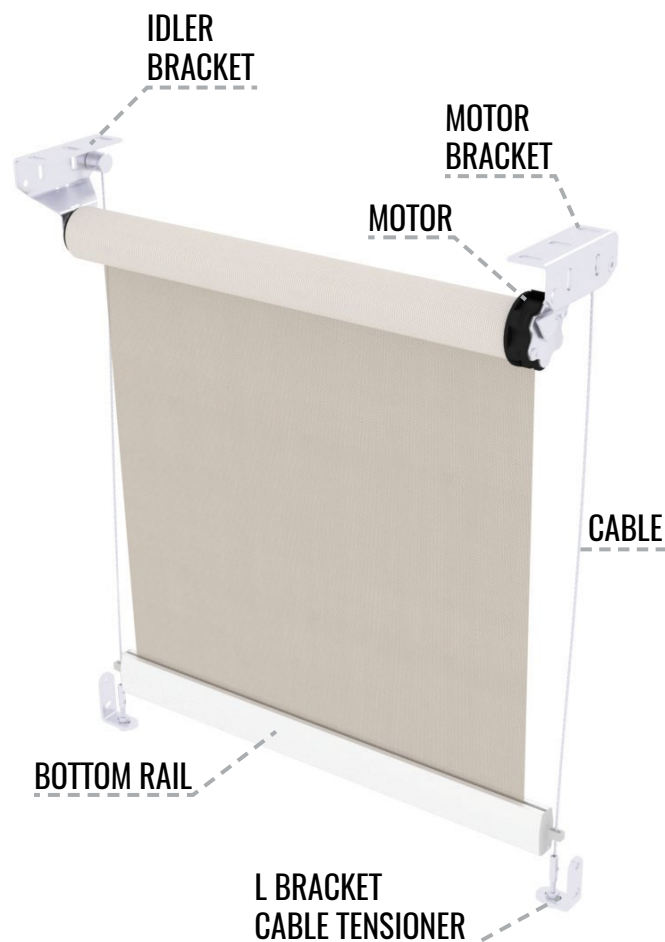
Brackets and Bottom Rail
Available In The Following Colors



White

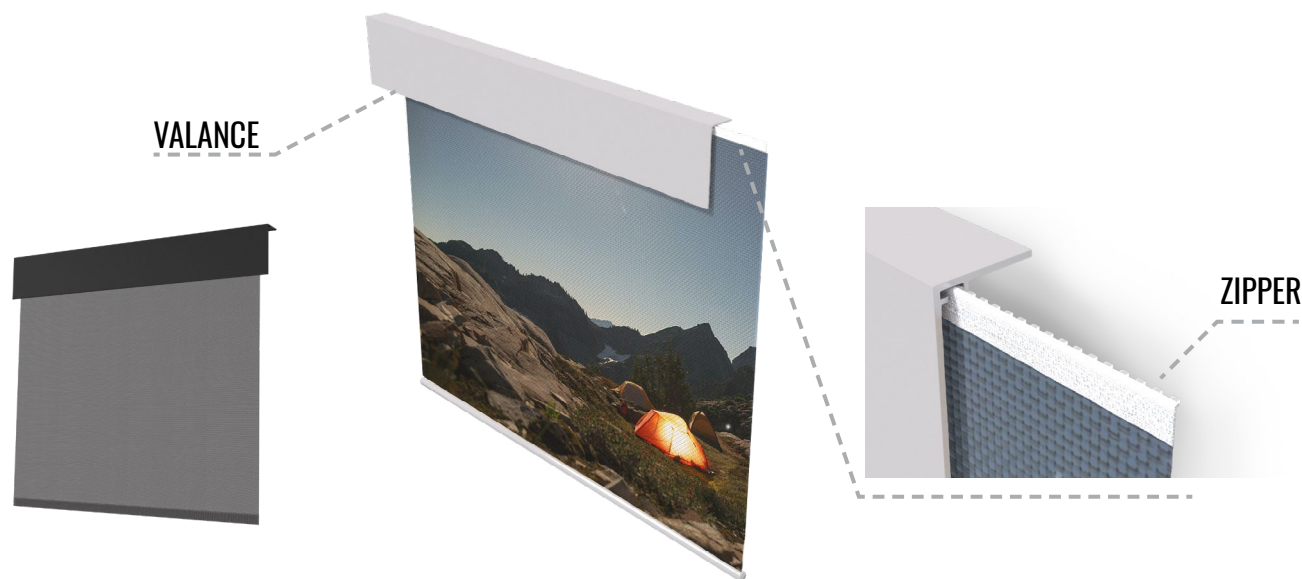


Black



ZipStat System

The ZipStat System is ideal when constant sun protection is a necessity. The ZipStat is cost effective and easily installed. The valance is available in 5 powder coating colors and there are many fabric options that can be used in this system. Installing a printed shade into this system allows customers to enjoy the benefits of a sun protection system while utilizing visual marketing graphics. This system also gives customers the ability to easily change the shade fabric every time a new marketing campaign is released.



Valance Available In The Following Colors



Phifer Sheerweave® 7500 - Ice



Phifer Sheerweave® 4000 Ebony



Exterior Systems

Exterior shade systems are the perfect solution to protect your customers from the harsh effects of the elements. These systems are designed to decrease thermal heat gain, block direct sunlight and reduce glare to create a relaxing outdoor atmosphere. Exterior shades can be installed on patios or outdoor eating areas to create a comfortable ambiance for employees and customers. Roll-A-Shade® offers a wide variety of exterior fabrics that are manufactured to withstand the elements.





The Roll-A-Shade® ZipShade® offers proven performance, high quality, superior design and easy installation. Wind tight in every position, thanks to the patented ZipShade® technology, flapping or tearing of screen fabrics is a thing of the past.

Premier Patio Shading

The addition of patio seating at a restaurant has been proven to increase revenue and the customers' dining experience. There are many factors that lead to the contentment of customers, the most important being comfort. The ZipShade® makes patio seating more enjoyable by filtering the direct sunlight and decreasing heat gain while maintaining outdoor views. When in the closed position, the ZipShade® is insect-proof and is operational in winds up to 80mph*. Intelligent side channel technology allows quiet operation to ensure guests are not disturbed by the raising or lowering of the shade. The ZipShade® makes outdoor eating spaces more comfortable for occupants in any season.

** Please see page 3.5 for wind rating chart*

Clear Vinyl Windows

To maintain optimal view-through, transparent vinyl windows can be fitted in the ZipShade®. Clear vinyl windows are ideal on restaurant patios when outdoor views must be preserved. When in the closed position, the vinyl windows allow occupants to maintain a connection with the outdoors while blocking insects from entering the space.



Maximum Sun Protection

When placed on the exterior facade, the Roll-A-Shade® ZipShade® helps avoid overheating by filtering the direct sunlight that enters an interior space. This can result in decreased cooling and air conditioning costs and can reduce overall energy consumption by utilizing natural daylight. Depending on the type of fabric selected, different degrees of heat-resistance are possible. The ZipShade® can greatly reduce the use of artificial lighting while also reducing heat gain by not allowing sun rays to penetrate the glass exterior of the building.

The extensive range of fabric colors and profiles ensures that the ZipShade® is in perfect harmony with the architecture of your building, thus creating a pleasant environment.



OPERATIONAL
in winds up to **80** ^{M*}
P
H

* Please see page 3.5 for wind rating chart



Zipshade® Product Specifications

There are three different ZipShade® sizes: ZipShade® 100, ZipShade® 100 Slim and ZipShade® 150. Each system has unique characteristics and can be installed in a variety of applications.

Shade Headbox

The ZipShade® headbox is constructed of two aluminum profiles. The headbox is closed by means of a square front profile that hinges into the box. This construction of the headbox results in easy assembly and installation. Each end has a side console that supports the roller tube and is equipped with heavy duty pins that lock the headbox into the side channels.

Fabric Roll

The ZipShade® fabric roller is composed of steel and has a unique sunken groove to limit the impression of the fabric loop. This groove strongly reduces the horizontal line formation in the fabric.

Bottom Bar

The ZipShade® bottom bar is composed of extruded aluminum and is made heavier with a round bar of galvanized steel. For perfect connection with the sill, the bottom bar has a plastic darkening strip.

Side Channel

The ZipShade® side channels are made of extruded aluminum. The external side channel consists of 2 parts. The internal channel is made of HPVC and is fitted with neoprene buffer zones to compensate for wind gusts. The zip, which is welded to the fabric, slides into the HPVC side channels and the fabric is 'held fast'.



ZipShade® 100

Ideal for smaller openings.



ZipShade® 100 Slim

Side channels can be recessed into walls to provide a seamless appearance.

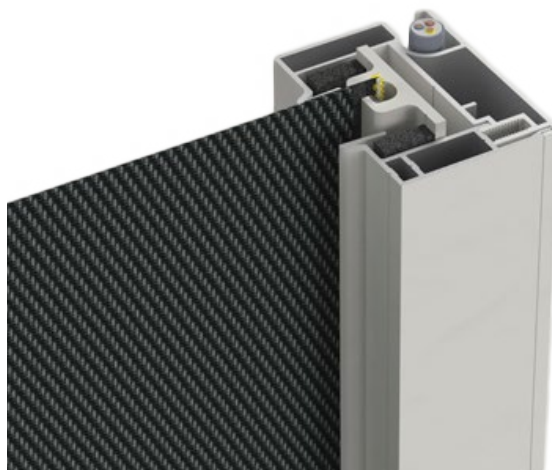


ZipShade® 150

Designed for larger applications up to 20' wide.

Patented Zip System

The superior ZipShade® utilizes a patented zip system called Smooth Technology. The custom zipper is welded onto the edges of the shade fabric and inserted into the custom, 2-part side channel. This locking zipper guarantees a fixed fabric with no wrinkles. The interior of the channel contains a co-extruded self-lubricating PVC top coating which results in smooth, quiet operation.



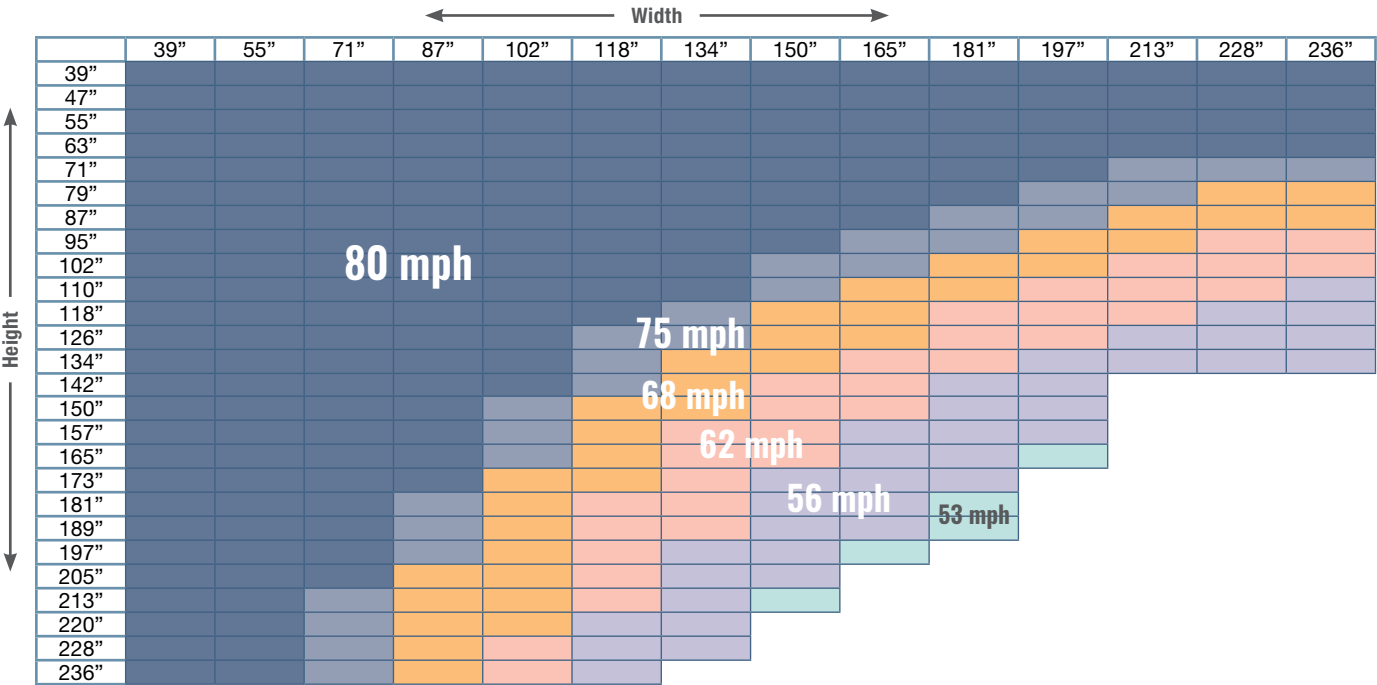
Operational Wind Speed

The superior ZipShade® side channel technology results in extreme wind resistance. Thanks to the ingenious zip system, the shade fabric is windproof in any position. Due to the edging, the symmetrical zipper is positioned on both sides of the fabric and is firmly embedded in the zip guides. Testing has shown that the ZipShade® is resistant against a wind speed of up to **80mph*** in a closed position which makes the ZipShade® one of the most weather resistant, sun protection screens on the market.

** Wind rating subject to change based on shade size.*

Zipshade® Wind Rating

Wind tests performed on the ZipShade® installed in front of a window and manufactured using fiberglass shade fabric.



Cable Guided System

MANUAL
SYSTEM

ISN
INTELLIGENT SHADE NETWORK

4WIRE

RADIO

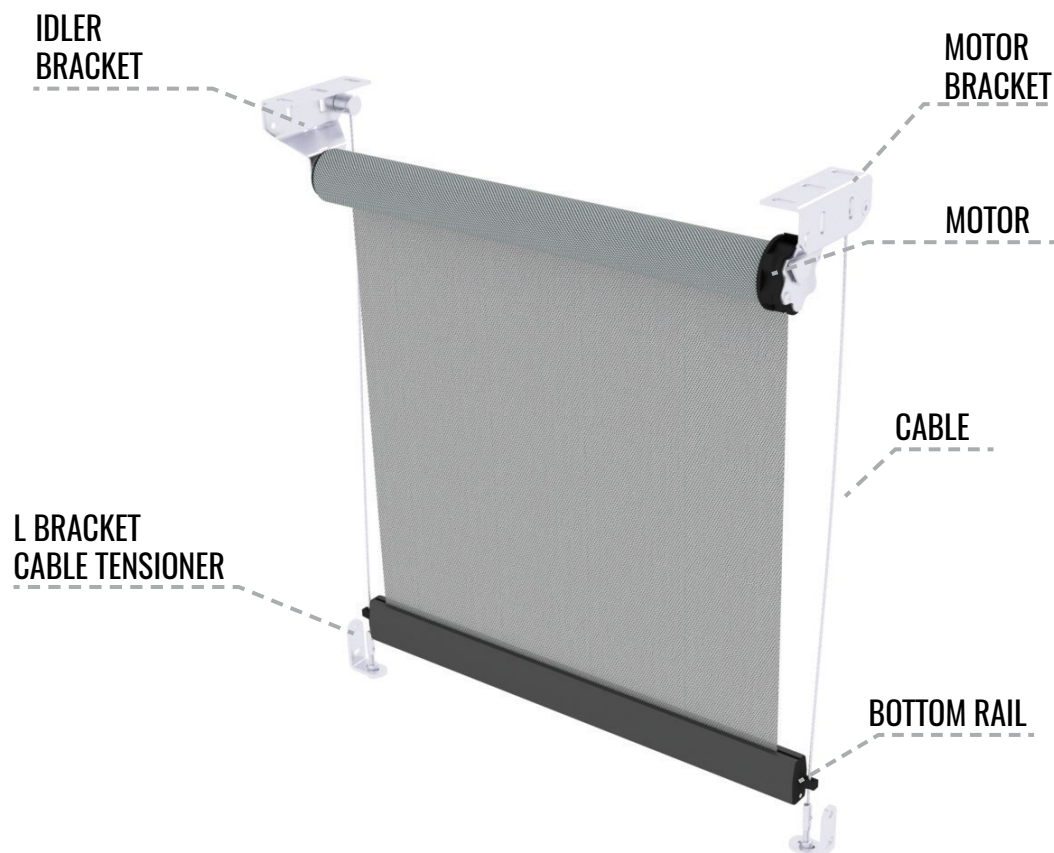


Serge Ferrari® Soltis® 92 - Black



Mermet® E Screen 7503 - Charcoal/Cocoa

The durable exterior Cable Guided System is a cost-effective shading solution for exterior applications. This heavy-duty system is made to withstand moisture and temperature fluctuation while keeping your customers comfortable. Made of stainless steel, guide wires are connected to the upper bracket and ground to stabilize the shade and prevent damage from outdoor weather conditions. This system preserves your outdoor view while allowing you to maximize heat gain reduction and control sunlight. Outdoor roller shades are a stylish addition to any patio, veranda, sun-room or courtyard, and can be rolled up when not in use.



When combined with battery and solar power options, radio controlled motorized shades truly are wire free. There are a multitude of radio control options including wireless wall switches, hand held remote controls, sun sensors and timers. Radio controlled shades are great in retrofit and remodel projects.

Radio shades can be operated from virtually anywhere without direct line of sight. Similar to how a garage door opener operates, radio signals travel through walls and make it possible to control multiple coverings alone or as a group.



Radio Controls

Remotes

Hand-held remotes provide convenient control and are most popular in residential settings. Some models allow for control of remote sensors, while others are equipped with built-in timers. Whether the remote is for the living room, conference room or patio, remotes are a simple and stylish option for shade operation.

Switches

Wall switches are ideal in most commercial settings where a hand-held remote may get lost. Simply install a wall switch in any interior wall and/or convert the keypad into a table-top remote with a special accessory. Each wall switch is equipped with an up, down and “stop” button, allowing you to control motorized shades effortlessly.

Sensors

Roll-A-Shade® offers sun, wind, rain and temperature sensors. Sensors allow for automation of radio controlled motorized systems. Roller shades operated by sensors will adjust automatically to the changing elements of the outdoors.

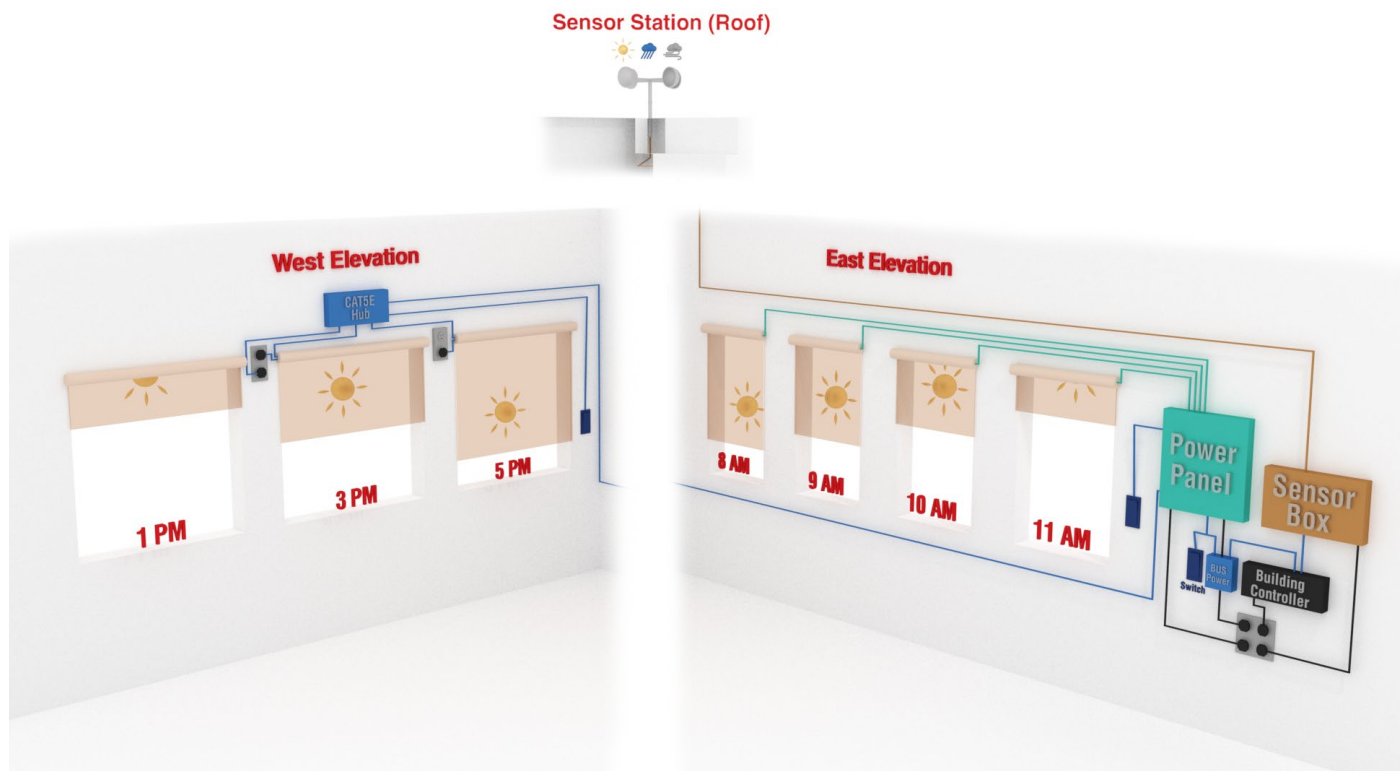


Intelligent Shade Network

Roll-A-Shade's Intelligent Shade Network (ISN) utilizes intelligent motor technology to provide a comprehensive sun control solution for every environment. The intelligent motor design features an on board microprocessor and a digital encoder, which allows a wide range of features to be easily programmed.

The ISN is software configured for the management of day lighting and glare control to improve comfort and reduce HVAC energy demands. Each component is assigned a unique address which allows specific tasks to be configured over the network. Configuration and reconfiguration is easy as functional assignments are made without the need to access the end product or physically rewire hardware. Whether designing for 10 motors or 1000 motors you no longer carry the cost impact of providing a centralized building controller and remotely located hardware modules. Partnering is easy since the ISN plays nicely with others. With standardization of the bus line approach it easily integrates with lighting, HVAC and Energy Management Systems.

With automated shade scheduling, shades are altered based on the current environment and pro-actively adjust to conditions. Shades automatically adjust to maintain the maximum amount of natural light while continuing to block the harsh direct sunlight and heat.



4WIRE

In new construction or renovations, 4-Wire Motor Systems provide simple and reliable control for installations that do not require complex management solutions. A 4-Wire Motor System links the control device to the motor using electrical wires carrying power and limiting the switch to the source of control. The common motor options available for these systems are durable and dependable and feature a wide variety of torques and speeds which are a beneficial resource for interior or exterior motorized shading applications.



When choosing basic controlled systems, power supply and wiring should be planned prior to construction and include the possibilities of future renovations. Manual controls must be located near windows and in strategic areas which often requires a detailed system design process before development can take place. 4-Wire Motor Systems are a great solution for cost-conscious new construction projects that must meet specific wiring requirements.



MANUAL SYSTEM

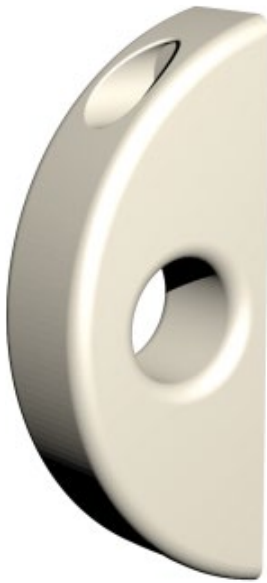
Every manual shade is manufactured with a premium, smooth operating clutch. Our premier clutch system is constructed of patented, long-lasting, nylon core technology. Clutches are very simple to operate; simply pull down on the control chain to either raise or lower the shade to desired height.



Spring Assist Clutch

This high capacity spring assisted clutch is a perfect solution for large, heavy shades. This inventive clutch has a spring that is pre-rotated to a designated tension to reduce pull force required to lift heavy shades. The Spring Assist Clutch provides smooth and quiet operation and is a cost effective alternative to motorization. The clutch reduces the pull force on heavy shades to approximately 6 lbs (2.7 kg) even on shades weighting up to 30 lbs (24 kg).

Child Safe Chain Anchor

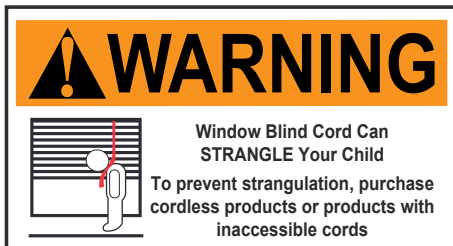


This chain anchor (tension device) is compliant with American Safety Standard ANSI/ WCMA A100 1-2018 and Canadian Safety Standard CAN-CSA Z600-14 5.2.4 which require that the tension device shall be designed so when not properly installed it will, at least partially, prevent the lift system from moving the window covering through lowering and raising.

This chain anchor secures the bead chain making the operation smooth while providing an attractive appearance. This anchor requires 2 mounting screws to eliminate anchor swivel and promote strength.

Warning: Failure to use the chain anchor may cause injury or death.

Chain Anchor Available In The Following Colors



Hem Bar



The sealed pocket hem bar is heat welded at the top and the sides to provide a refined, unobtrusive appearance.

Bottom Rail



Roll-A-Shade's proprietary bottom rail is durable, sleek and attractive. It is available in all standard colors to match the fascia and installation brackets. The plastic end caps are available in black and white.

Bottom Rail Available In The Following Colors





Branding

Your brand has a voice, and printed logo shades can help you communicate that voice to your customers, while reducing glare and heat gain. Printed logo shades are ideal when your location has strict exterior signage codes. Printing is visible from the storefront, putting your company logo or products directly in front of your consumers.



Need sun control and signage? Use printed shades to do both jobs. Dual-purpose printed shades provide protection from UV rays and glare while also providing you with a canvas to display any message to your customers. From drive-thru window instructions to product displays, printed shades allow you to convey your information in an aesthetically pleasing and functional way.

Let your imagination run wild with a full-bleed print! Whether you're inspiring young minds, or fostering creativity, your image choices are endless. From photos, to murals, to inspiring messages, printed shades can help you turn your windows into a piece of artwork while maintaining a comfortable interior environment.



Printed Shades

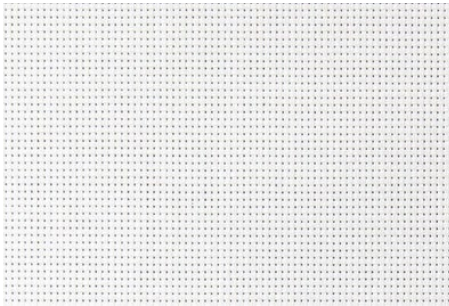
Roll-A-Shade® offers custom printing on manual, stationary and motorized roller shades. Our state-of-the-art printing equipment has the ability to print vibrant, vivid artwork including company logos and full-bleed marketing images. Printed shades are an extremely cost-effective way to create added sales exposure while maintaining all the benefits of our sun shades, including clear visibility to outside and energy savings. Our durable, odorless water-based latex inks are GREENGUARD Gold® certified and able to withstand years of wear. We can print on a wide variety of solar screen fabrics. Please contact your sales representative for a complete list of printable fabrics.



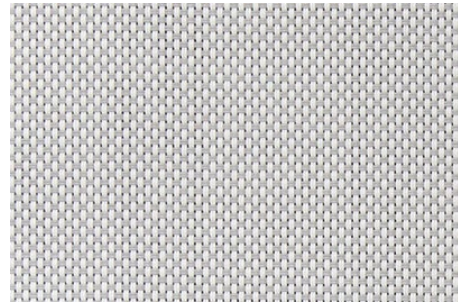
Roll-A-Shade® Print Series

The Roll-A-Shade® Print Series features a distinct line of fabrics that are ideal for printing. Whether you are printing a full-bleed image, or a 3-color logo, the Print Series offers a bright, vibrant image every time. Available in 3 colors and 4 openness factors, the Print Series is sure to have a fabric to suit your needs. All fabrics in the Print Series line are flame retardant and GREENGUARD® certified.

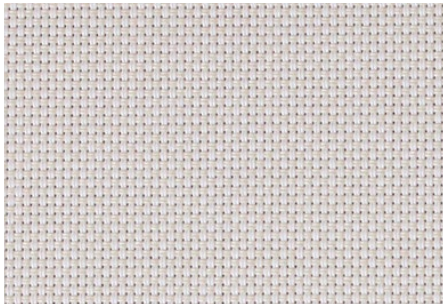
Print Series | 1%, 3%, 5%, 10%



001 - White/White



003 - White/Gray



016 - White/Linen



Logo Shades®

Build your brand by adding Logo Shades® to any of your windows. Logo Shades® are cost-effective and allow you to display your message when exterior signage is limited. All printing and manufacturing is completed in-house to your exact specifications, right down to the PMS® colors. Logo Shades® are UV resistant and visible in all types of lighting. Choose where the logo is displayed in the window by raising or lowering the shade.

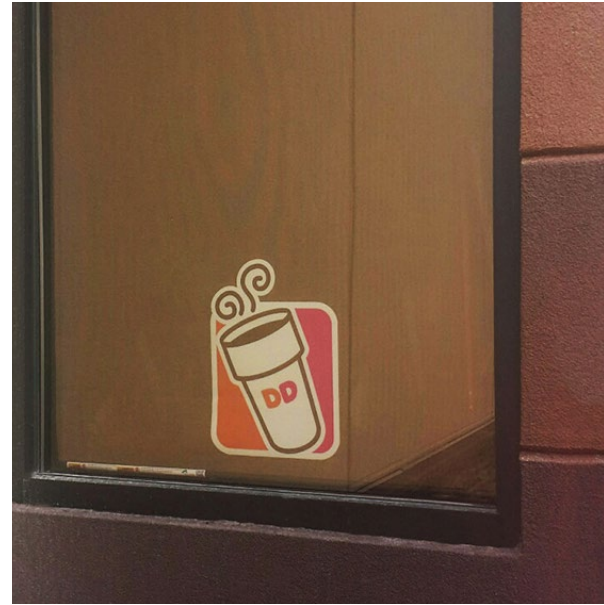


Table of Contents

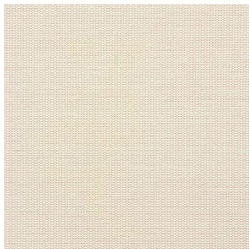
Choosing the Right Fabric	6.2
Fabrics	6.4
High Performance Fabrics	6.4
E Screen with KoolBlack™	6.4
T Screen with KoolBlack™	6.4
SheerWeave® Style 2500+/2410+/2390+	6.5
SilverScreen	6.5
Sustainable Fabrics	6.6
Greenscreen Revive®	6.6
SheerWeave® Style 8000	6.6
SheerWeave® Infinity ₂ ®	6.7
SheerWeave® Style 4400/4000/4100	6.7
Solar Screen Fabrics	6.8
Roll-A-Shade® Signature Series	6.8
SheerWeave® Style 2500/2410/2390/2360	6.8
Soltis® Harmony 88	6.9
SheerWeave® Style 2000/2100	6.10
E Screen	6.10
Sunshadow 3000 Net	6.11
SheerWeave® Style 2701/2703/2705/2710	6.11
M Screen	6.12
SheerWeave® Style 4600/4500	6.12
SheerWeave® Style 4800	6.13
SheerWeave® Style 4650/4550	6.13
SheerWeave® Style 4901/4903	6.14
SheerWeave® Basic	6.14
SheerWeave® 7600/7650	6.15
Soltis® Master 99	6.15
Soltis® Master 99 (cont.)	6.16
Designer Fabrics	6.16
Deco Screen	6.16
S Screen	6.17
SheerWeave® Style 5000	6.17
SheerWeave® Style 5000 (cont.)	6.18
Vizela	6.18
Interior & Exterior Fabrics	6.19
Soltis® Perform 92	6.19
Soltis® Perform 92 (cont.)	6.20
Soltis® Horizon 86	6.20
Soltis® Horizon 86 (cont.)	6.21
Vienne	6.21
Natte	6.22
SunTex 80	6.22
SunTex 90	6.23
SunTex 95	6.23
Blackout Fabrics	6.24
Flocke	6.24
SheerWeave® Style 7000	6.24
SheerWeave® Style 7100	6.25
SheerWeave® Style 7500/7500R	6.25
Avila Twilight	6.26

**Not all fabric sample cards are in this binder. If you need a fabric card that is not in this binder, please reach out to your Sales Representative.*

Choosing the Right Fabric

Sun control fabrics are designed to control light, glare and heat without obstructing the view. When choosing a fabric, there are a few other things to consider like function, style, color, technology, sustainability and certifications.

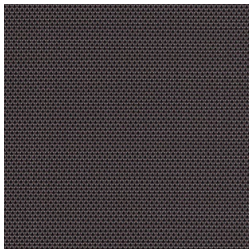
Function



M-Screen | 3% | White Stone

Temperature Control

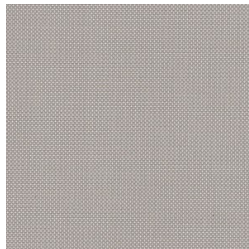
When heat gain or loss is an issue, a fabric with a smaller openness factor, such as a 3%, is ideal. This style fabric will control heat gain and loss while also controlling the light that enters the space.



Sheerweave® Style 4100 | Tobacco

View-Through

When preserving outdoor views is of the utmost importance, a fabric with a higher openness factor, such as a 10%, is ideal. The larger openness factor will allow occupants within the space to see outside more clearly.

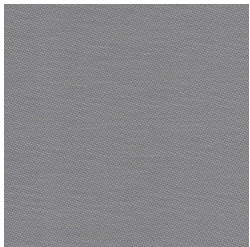


Sheerweave® Style 7100 | Bone-Platinum

Light Control

When complete darkness is a necessity, blackout fabrics are ideal. Blackout fabrics will block 100% of light when paired with a shade system with side channels.

Style



Sheerweave® Style 2705 | Oyster-Pewter

Solar Screen

A traditional solar screen contains a repetitive pattern and weave. This style provides consistent coverage throughout each window.

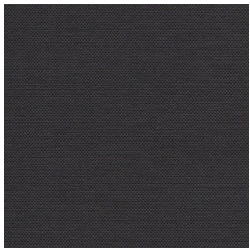


Sheerweave® Style 5000 | Linen-Cranberry

Designer Screen

Unique weave that provide a more decorative look than traditional solar screen weaves. Designer weaves can include multiple colors and textures.

Color



Sheerweave® Style 4100 | Tobacco

Dark Fabrics

A darker colored fabric is ideal when glare control and view through are a necessity. Dark colored fabrics transmit less light which in return has a lower surface brightness and reflectivity. When preserving outdoor views is important, dark fabrics are the most ideal option.



E-Screen | 5% | White-Linen

Light Fabrics

A lighter colored fabric will reflect sunlight and in turn will absorb less heat, lowering the heat gain in the space. Light colored fabrics are ideal for facades that experience intense UV rays and harsh sunlight.

KOOLBLACK® TECHNOLOGY



KOOLBLACK® Technology

KOOLBLACK® Technology increases the heat reflectivity of dark color solar shade fabrics to levels comparable to light color fabrics. This feature, coupled with the other benefits of dark color fabrics, provides excellent contrast for a clear and sharp view through, comfortable indoor environments, and maximized energy savings through reduced cooling costs.

Reflective Backing

Reflective fabrics pair traditional solar screen fabrics with the highly reflective properties of metalization to create the ultimate sun control protection. A thin metalized coating is applied to the back side of a dark fabric to increase glare reduction and decrease heat absorption.

Sustainability



Cradle to Cradle®

The Cradle to Cradle® icon signifies the biometric approach to the design of products. The production of the product is modeled after nature's processes and materials circulate in a healthy, safe way.



Dow Ecolibrium®

Ecolibrium is a renewable alternative to traditional plasticizers. Ecolibrium lowers greenhouse gas emissions by as much as 40% compared to existing compounds. It is also phthalate free, lead-free and RoHS compliant.

Certifications for Human Health



Antimicrobial Product Protection



Clean Air, Indoor Air Quality, VOC emissions



Seal of Approval for effectiveness in preventing sun damage to skin or eyes.

Solar Properties

Ts = Solar Transmittance

Measures the percentage of solar radiation that passes through the fabric.

Rs = Solar Reflectance

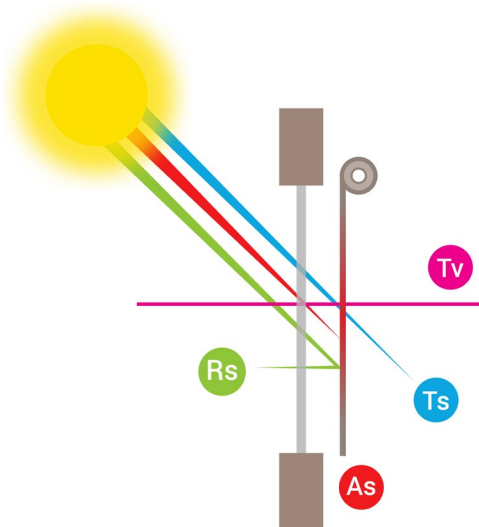
Measures the percentage of solar radiation reflected back out of the fabric.

As = Solar Absorbance

Measures the percentage of solar radiation absorbed by the fabric.

Tv = Visual Transmittance

Measures the percentage of visible light that passes through the fabric. Fabrics with the same openness factor may differ slightly in TV due to the reflectivity of light colors.



Fabrics



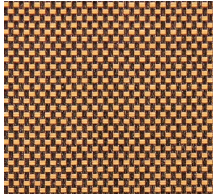
E Screen WITH KOOLBLACK TECHNOLOGY

High Performance | 1%, 3%, 5% Openness

32.32 Cocoa/Cocoa



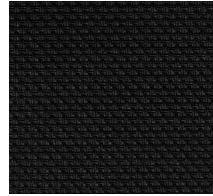
32.71 Cocoa/Apricot



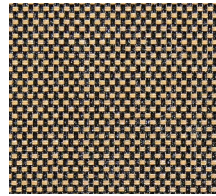
35.32 Charcoal/Cocoa



35.35 Charcoal/Charcoal



35.71 Charcoal/Apricot



Specification Data

Openness Factor:	Approximately 1%, 3%, 5%
Composition:	36% Fiberglass / 64% Vinyl
Fire Classification:	NFPA 701-10TM #1, California U.S. Title 19, CAN/ULC-S109-03 (Small & Large Flame test)
Bacteria and Fungal Resistance:	ASTM E 2180, ASTM G21
Acoustical Performance:	1% = NRC: 0.45/ SAA: 0.46, 3% = NRC: 0.15/ SAA: 0.17, 5% = NRC: 0.10/ SAA: 0.12
Card Revision Date:	09.17 v1



T Screen WITH KOOLBLACK TECHNOLOGY

Transparent | 1%, 3%, 5% Openness

02.31 White/Grey



02.32 White/Cocoa



02.35 White/Charcoal



K301 White/Charcoal-Grey



K302 White/Charcoal-Cocoa



Specification Data

Openness Factor:	Approximately 1%, 3%, 5%
Composition:	36% Fiberglass / 64% Vinyl
Fire Classification:	NFPA 701-10 TM#1, California U.S. Title 19, CAN/ULC-S109-03 (Small & Large Flame Test)
Bacteria and Fungal Resistance:	ASTM E 2180, ASTM G21
Acoustical Performance:	1% = NRC: 0.10/ SAA: 0.11, 3% = NRC: 0.05, SAA: 0.08, 5% = NRC: 0.10, SAA: 0.07
Card Revision Date:	08.17 v1



PHIFER SheerWeave® Style 2500+ / 2410+ / 2390+

Metallized Fabric | 1% 3% 5% Openness



Specification Data

Openness Factor:	Approximately 2500 = 1%, 2410 = 3%, 2390 = 5%
Composition:	2500+: 36% Fiberglass, 62% Vinyl on Fiberglass, 2% Aluminum Coating. 2410+: 34% Fiberglass, 64% Vinyl on Fiberglass, 2% Aluminum Coating. 2390+: 34% Fiberglass, 64% Vinyl on Fiberglass, 2% Aluminum Coating.
Fire Classification:	California U.S. Title 19 (small scale), NFPA 101 (Class A Rating), BS 5867 2008 Part 2 Type B Performance, CAN/ULC-S 109-03 (large and small scale), CAN/CGSB2-4.162-M80, NFPA 701 TM#1 (small scale), IBC Section 803.1.1 (Class A Rating), NFPA 701 TM#2 (large scale), ASTM E 84 (Class 1), M1 (NF-P-92 503), B2 (DIN 4102-1)
Bacteria and Fungal Resistance:	ASTM E 2180, ASTM G21, AATCC30 Part 3, ASTM D 3273. GREENGUARD Mold and Bacteria Standard ASTM 6329 includes Microban antimicrobial additives.
Acoustical Performance:	2500+ = NRC .50 / SAA .49 2410+ = NRC .25 / SAA .23 2390+ = NRC .15 / SAA .14
Card Revision Date:	V16

PHIFER

SilverScreen

Metallized Fabric | 2% & 4% Openness



Specification Data

Openness Factor:	Approximately 2% & 4%
Composition:	64% PVC, 36% Fiberglass
Fire Classification:	NFPA 701; NFP 925-3 specification M1; BS 5867 Part 2 Type B
Bacteria and Fungal Resistance:	Oeko-Tex Standard 100, ISO 14001 and ISO 9001, Greenguard, Ecospecifier
Acoustical Performance:	2500+ = NRC .50 / SAA .49 2410+ = NRC .25 / SAA .23 2390+ = NRC .15 / SAA .14
Card Revision Date:	V16

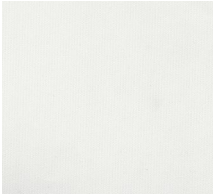
Please check fabric card for color availability as not all colors are available in all openness factors.



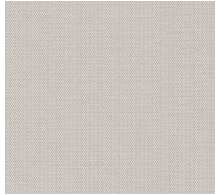
GreenScreen Revive®

Translucent | 1% & 5% Openness

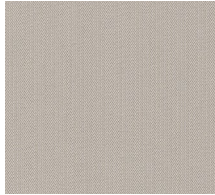
00.02 White



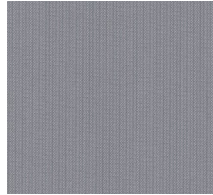
00.10 Sand



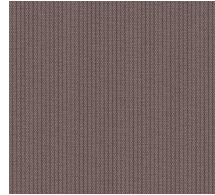
00.20 Linen



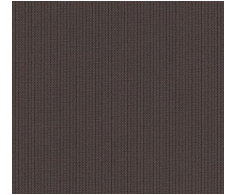
00.22 Stone



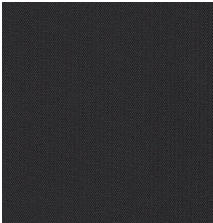
00.55 Mushroom



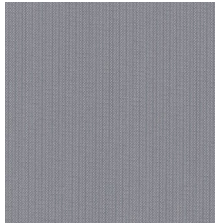
00.71 Suede



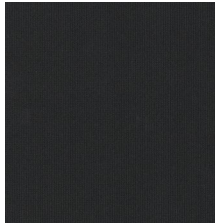
00.15 Dusk



00.22 Pewter



00.30 Onyx



Specification Data

Openness Factor:	Approximately 1% & 5%
Composition:	100% Polyester / PVC Free, 89% Recycled Content
Fire Classification:	NFPA 701-10 TM#1, California U.S. Title 19, CAN/ULC-S109-03 Small & Large Flame Test
Bacteria and Fungal Resistance:	ASTM G21
Acoustical Performance:	1% = NRC: 0.20/ SAA: 0.22, 5% = NRC: 0.15/ SAA: 0.14
Card Revision Date:	02.17 v1



PHIFER

SheerWeave® Style 8000

Sustainable | 3% Openness

S01 Snow



S02 Eggshell



S03 Ecru



S04 Silver



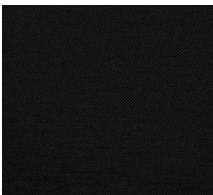
S05 Smoke



S06 Seal



S07 Kohl



Specification Data

Openness Factor:	Approximately 3%
Composition:	100% Polyester
Fire Classification:	California U.S. Title 19 (small scale), NFPA 101 (Class A Rating), BS 5867 Part 2 Type B Performance, CAN/ULC-S 109-03 (Large and small scale), CAN/CGSB2-4. 162-M80, NFPA 701 TM#1 (Small scale), IBC Section 803.1.1 (Class A Rating), NFPA 701 TM#2 (Large scale), B1 (DIN 4102-1)
Bacteria and Fungal Resistance:	ASTM E 2180, ASTM G21
Acoustical Performance:	NRC .20 / SAA .22
Card Revision Date:	V17

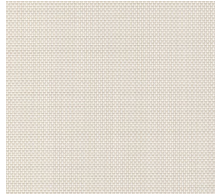


Sustainable | 1%, 3%, 5% Openness

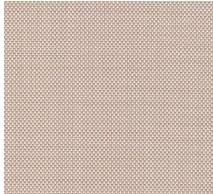
PG 1 Cotton



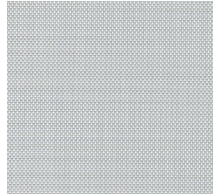
PG 2 Almond



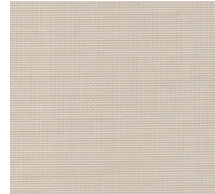
PG 3 Wheat



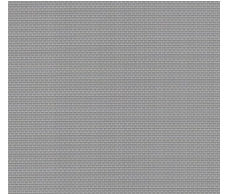
PG 4 Stone



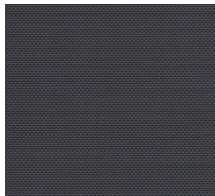
QG 1 Barley



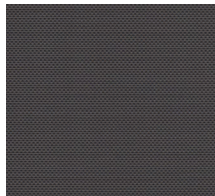
VG 1 Nickel



VG 2 Midnight



VG 3 Bark



VG 4 Slate



Specification Data

Openness Factor:	Approximately 1%, 3%, 5%
Composition:	100% TPO (Thermoplastic Olefin) 20% TPO fiber yarn, 80% TPO TPO coating on TPO yarn
Fire Classification:	NFPA 701 TM#1 (Small scale), CAN/ULC-S 109-03 (Large scale), CAN/CGSB2-4. 162-M80, NFPA 101 (Class A Rating), IBC Section 803.1.1 (Class A Rating), BS 5867 Part 2 Type B Performance.
Bacteria and Fungal Resistance:	ASTM E 2180, ASTM G21
Acoustical Performance:	1%= NRC .20/ SAA .23, 3%=NRC .20 / SAA .19, 5%= NRC .10 / SAA .1
Card Revision Date:	v17



SheerWeave[®] Style 4400/4000/4100

Bio-based Plasticizer | 3%, 5%, 10% Openness

U58 Chalk



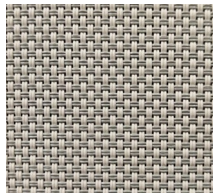
U59 Alabaster



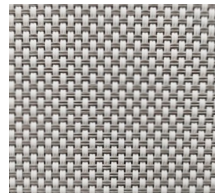
U60 Pebblestone



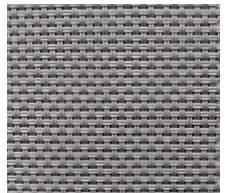
U61 Greystone



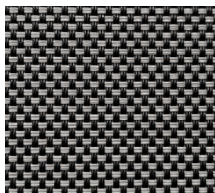
U62 Granite



U63 Pewter



U64 Ash



U65 Ebony



U66 Tobacco



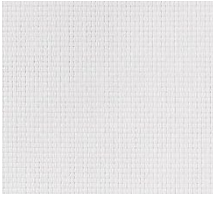
Specification Data

Openness Factor:	Approximately 4400 = 3%, 4000 = 5%, 4100 = 10%
Composition:	25% Polyester, 75% Vinyl on Polyester (Over 50% of compound components are derived from crop-based feed stocks and minerals. Over 2/3 of total compound is derived from non fossil fuel based materials.)
Fire Classification:	California U.S. Title 19 (small scale), NFPA 101 (Class A Rating), BS 5867 Part 2 Type B Performance, NFPA 701 TM#2 (large scale), NFPA 701 TM#1 (small scale), IBC Section 803.1.1 (Class A Rating), CAN/ULC-S 109-03 (large and small scale), CAN/CGSB2-4.162-M80.
Bacteria and Fungal Resistance:	ASTM E 2180, ASTM G21, AATCC30 Part 3, ASTM D 3273, GREENGUARD Mold and Bacteria Standard ASTM 6329 includes Microban antimicrobial additives
Acoustical Performance:	3% = NRC .20 / SAA .19, 5% = NRC .10 / SAA .11, 10% = NRC .05 / SAA .05
Card Revision Date:	v17

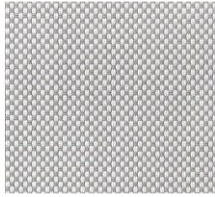
Roll-A-Shade® Signature Series

Solar Screen | 1%, 3%, 5% & 10% Openness

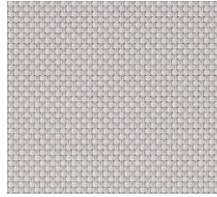
Brite White/White (All %)



White/Gray (All %)



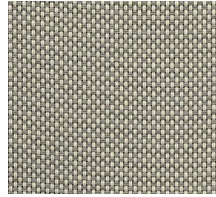
White/Linen (All %)



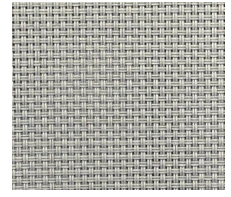
Bone/Bone (1, 3 & 5%)



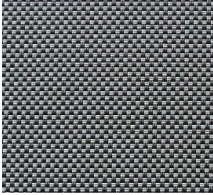
Beige/Gray (1, 3 & 5%)



Gray/Gray (1, 3 & 5%)



Black/Gray (1, 3 & 5%)



Black/Dark Gray (1, 3 & 5%)



Charcoal/Bronze (1, 3 & 5%)



Black/Black (1, 3 & 5%)



Please check fabric card for color availability as not all colors are available in all openness factors.

Specification Data

Openness Factor:	Approximately 1%, 3%, 5% & 10%
Composition:	24% Polyester / 76% PVC
Fire Classification:	NFPA 701
Bacteria and Fungal Resistance:	ASTM G21
Card Revision Date:	V003



PHIFER SheerWeave® Style 2500/2410/2390/2360

Solar Screen | 1%, 3%, 5%, 10% Openness

P12 Oyster



P13 Oyster/Beige



P14 Oyster/Pearl Gray



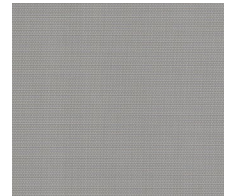
Q20 Beige



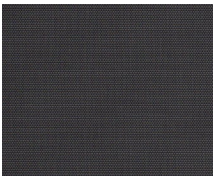
Q21 Beige/Pearl Gray



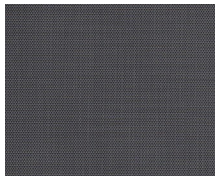
V20 Pearl Gray



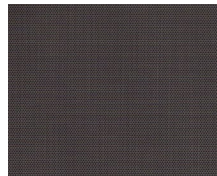
V21 Charcoal



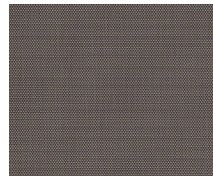
V22 Charcoal/Gray



V24 Charcoal/Chestnut



V32 Charcoal/Alpaca



PROTECTION THAT LIVES ON
MICROBAN®

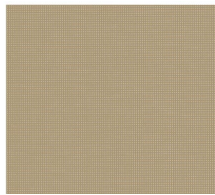
Specification Data

Openness Factor:	Approximately 2500 = 1%, 2410 = 3%, 2390 = 5%, and 2360 = 10%
Composition:	2500 = 37% Fiberglass, 63% Vinyl on Fiberglass. 2410, 2390, 2360 = 35% Fiberglass, 65% Vinyl on Fiberglass
Fire Classification:	California U.S. Title 19 (small scale), NFPA 101 (Class A Rating), BS 5867 Part 2 Type B Performance, CAN/ULC-S 109-03 (large and small scale), NFPA 701 TM#1 (small scale), IBC Section 803.1.1 (Class A Rating), NFPA 701 TM#2 (large scale), CAN/CGSB2-4.162-M80
Bacteria and Fungal Resistance:	ASTM E 2180, ASTM G21, AATCC30 Part 3, ASTM D 3273, GREENGUARD Mold and Bacteria Standard ASTM 6329, includes Microban antimicrobial additives
Acoustical Performance:	2500 = NRC .55 / SAA .54, 2410 = NRC .20 / SAA .21, 2390 = NRC .10 / SAA .12, 2360 = NRC .05 / SAA .06
Card Revision Date:	V17

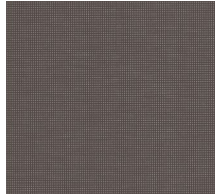
Soltis® Harmony 88

Solar Screen | 8% Openness

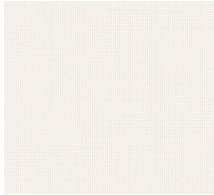
Pepper 88-2012



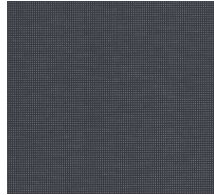
Bronze 88-2043



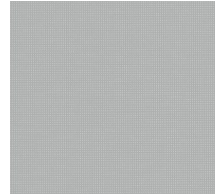
White 88-2044



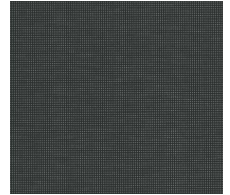
Anthracite 88-2047



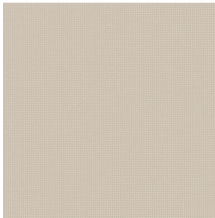
Alu/Alu 88-2048



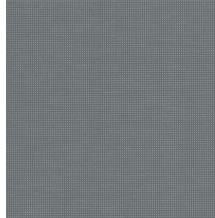
Black 88-2053



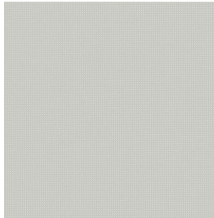
Sandy Beige 88-2135



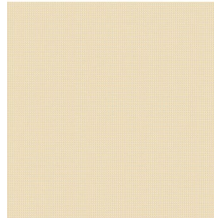
Concrete 88-2167



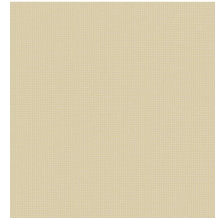
Boulder 88-2171



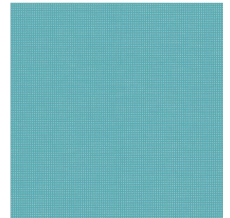
Champagne 88-2175



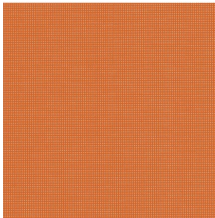
Hemp 88-50265



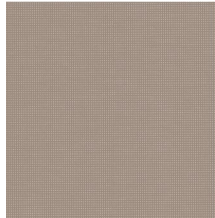
Bermuda 88-50306



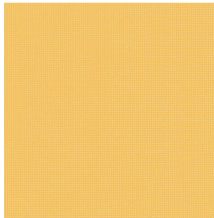
Paprika 88-50308



Ash Brown 88-50329



Apricot 88-50332



Bamboo 88-50333

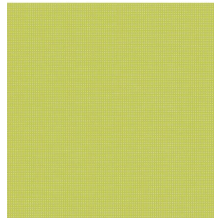
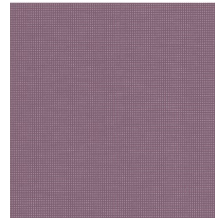


Fig 88-50335



Specification Data

Openness Factor:	Approximately 8%
Composition:	45% High Tenacity Polyester, 55% PVC Coating
Fire Classification:	Method 1 & 2/NFPA 701, CSFM T19, Class A/ASTM E84
Bacteria and Fungal Resistance:	ASTM G21
Card Revision Date:	JULY 2016/V1.01



SheerWeave® Style 2000/2100

Solar Screen | 5% & 10% Openness

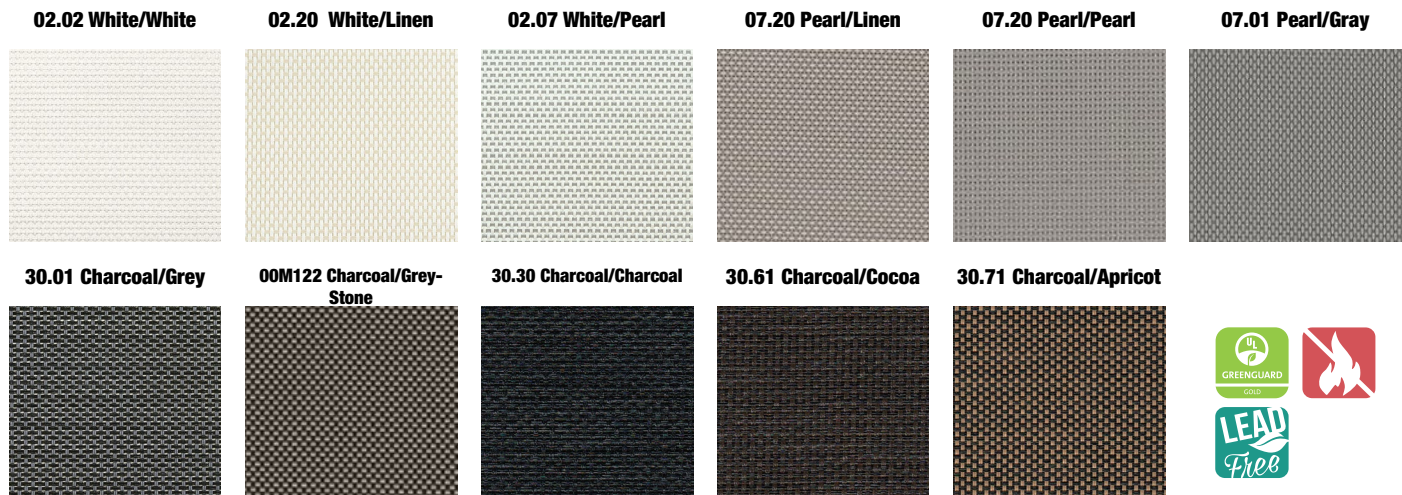


Specification Data

Openness Factor:	Approximately 2000 = 5%, 2100 = 10%
Composition:	37% Fiberglass, 63% Vinyl on Fiberglass
Fire Classification:	California U.S. Title 19 (small scale), NFPA 101 (Class A Rating), BS 5867 Part 2 Type B Performance, CAN/ULC-S 109-03 (large and small scale), NFPA 701 TM#1 (small scale), IBC Section 803.1.1 (Class A Rating), NFPA 701 TM#2 (large scale), CAN/CGSB2-4.162-M80
Bacteria and Fungal Resistance:	ASTM E 2180, ASTM G21, AATCC30 Part 3, ASTM D 3273, GREENGAURD Mold and Bacteria Standard ASTM 6329, includes Microban antimicrobial additives
Acoustical Performance:	2000 = NRC .10 / SAA .11
Card Revision Date:	V17

E Screen

Solar Screen | 1%, 3%, 5%, 10% Openness




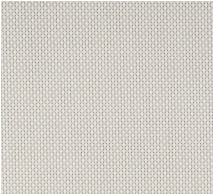
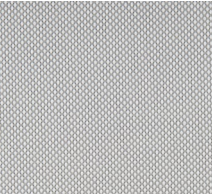


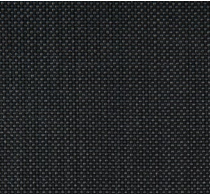
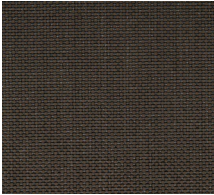
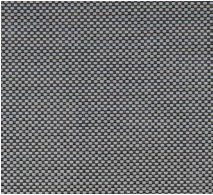
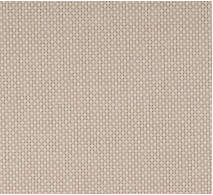
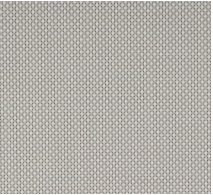
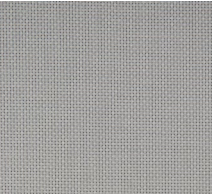
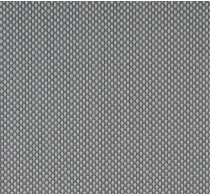

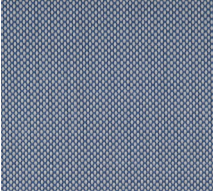
Specification Data



Openness Factor:	Approximately 1%, 3%, 5%, and 10%
Composition:	36% Fiberglass, 64% Vinyl
Fire Classification:	NFPA 701-10 TM#1, California U.S. Title 19, CAN/ULC-S109-03 Small & Large Flame Test
Bacteria and Fungal Resistance:	ASTM E2180, ASTM G21
Acoustical Performance:	1% = NRC: 0.50/ SAA: 0.50, 3% = NRC: 0.15/ SAA: 0.17, 5% = NRC: 0.10/ SAA: 0.12, 10% = NRC: 0.05/ SAA: 0.06
Card Revision Date:	09.18v.1



Sunshadow 3000 NET

Solar Screen | 1%, 3%, 5%, 10% Openness

N001 White/White	N002 White/Beige	N003 White/Gray	N201 Beige/Beige	N801 Bronze/Bronze	N901 Charcoal/Charcoal										
															
N902 Charcoal/Bronze	N903 Charcoal/Gray	N202 Beige/Sable	N203 Beige/Gray	N301 Gray/Gray	N302 Gray/Dark Gray										
															
N303 Gray/Blue Gray	N304 Gray/Blue	Specification Data													
		<table border="1"> <tr> <td>Openness Factor:</td> <td>Approximately 1%, 3%, 5%, and 10%</td> </tr> <tr> <td>Composition:</td> <td>25% Polyester, 75% PVC</td> </tr> <tr> <td>Fire Classification:</td> <td>M1, B1, B2, NFPA 701.</td> </tr> <tr> <td>Bacteria and Fungal Resistance:</td> <td>OEKO TEX Standard 100 Certification, ASTM-G21, G22</td> </tr> <tr> <td>Card Revision Date:</td> <td>2017 v1.01</td> </tr> </table>				Openness Factor:	Approximately 1%, 3%, 5%, and 10%	Composition:	25% Polyester, 75% PVC	Fire Classification:	M1, B1, B2, NFPA 701.	Bacteria and Fungal Resistance:	OEKO TEX Standard 100 Certification, ASTM-G21, G22	Card Revision Date:	2017 v1.01
Openness Factor:	Approximately 1%, 3%, 5%, and 10%														
Composition:	25% Polyester, 75% PVC														
Fire Classification:	M1, B1, B2, NFPA 701.														
Bacteria and Fungal Resistance:	OEKO TEX Standard 100 Certification, ASTM-G21, G22														
Card Revision Date:	2017 v1.01														

PHIFER SheerWeave® Style 2701/2703/2705/2710

Solar Screen | 1%, 3%, 5%, 10% Openness

P12 Oyster	P13 Oyster/Biege	P14 Oyster/Pearl Gray	V64 Charcoal/Slate	V65 Charcoal/Taupe	V66 Charcoal/Brown
					
P92 Oyster/Chestnut	P91 Oyster/Pewter	V22 Charcoal/Gray	P28 Oyster/Charcoal	V21 Charcoal	
					






Specification Data

Openness Factor:	Approximately 2701 = 1%, 2703 = 3%, 2705 = 5%, and 2710 = 10%
Composition:	2701 & 2703 = 36% Fiberglass, 64% Vinyl on Fiberglass. 2705 & 2710 = 34% Fiberglass, 66% Vinyl on Fiberglass
Fire Classification:	California U.S. Title 19 (small scale), NFPA 101 (Class A Rating), BS 5867 Part 2 Type B Performance, CAN/ULC-S 109-03 (large and small scale), NFPA 701 TM#1 (small scale), IBC Section 803.1.1 (Class A Rating), NFPA 701 TM#2 (large scale), CAN/CGSB2-4.162-M80
Bacteria and Fungal Resistance:	ASTM E 2180, ASTM G21, AATCC30 Part 3, ASTM D 3273, GREENGAURD Mold and Bacteria Standard ASTM 6329, includes Microban antimicrobial additives
Acoustical Performance:	2701 = NRC .15 / SAA .15, 2703 = NRC .10 / SAA .09, 2705 = NRC .05 / SAA .06, 2710 = NRC .05 / SAA .05
Card Revision Date:	V18



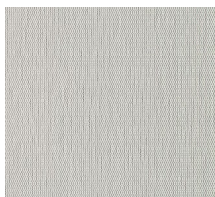
M Screen

Transparent | 1%, 3% & 5% Openness

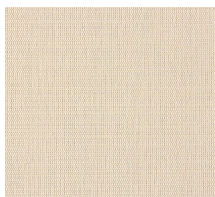
02.02 White /White



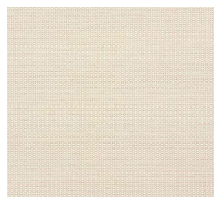
02.07 White/Pearl



02.20 White/Linen



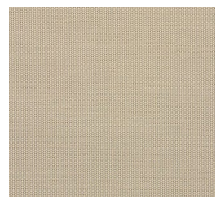
02.22 White/Stone



07.07 Pearl/Pearl



07.20 Pearl/Linen



20.22 Linen/Stone



30.01 Charcoal/Grey



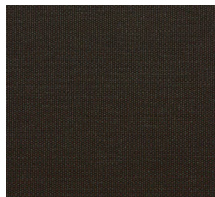
30.10 Charcoal/Sable



30.30 Charcoal/
Charcoal



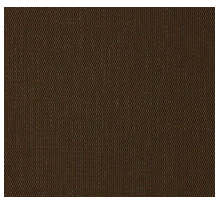
30.61 Charcoal/Cocoa



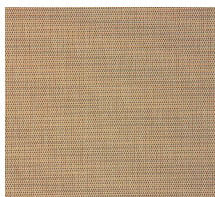
30.71 Charcoal/Apricot



61.30 Cocoa/Charcoal



M166 Linen/Sable-Cocoa



Specification Data

Openness Factor:	Approximately 1%, 3% & 5%
Composition:	36% Fiberglass, 64% Vinyl
Fire Classification:	NFPA 701-10 TM#1, California U.S. Title 19, CAN/ULC-S109-03 Small & Large Flame Test
Bacteria and Fungal Resistance:	ASTM E 2180, ASTM G21
Acoustical Performance:	1% = NRC 0.50 / SAA 0.49, 3% = NRC 0.35 / SAA 0.33, 5% = NRC 0.10 / SAA 0.12
Card Revision Date:	06.17v1

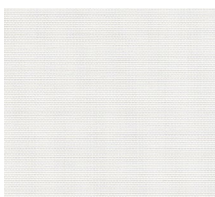


PHIFER

SheerWeave® Style 4600 / 4500

Solar Screen | 3% & 5% Openness

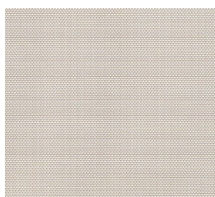
P06 Chalk



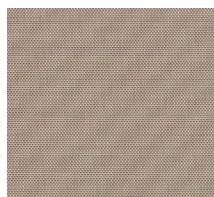
P10 Granite



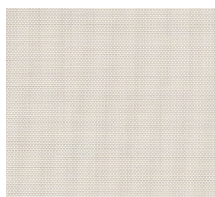
Q59 Ecru



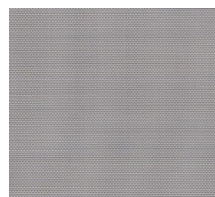
Q60 Golden Sand



U32 Linen



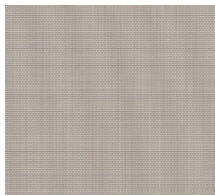
V07 Pewter



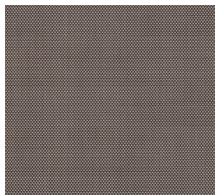
V10 Ebony



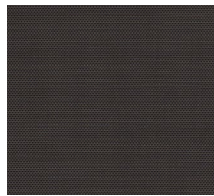
V44 Sandstone



V95 Cappuccino



V96 Dark Bronze



PROTECTION THAT LIVES ON
MICROBAN

Specification Data

Openness Factor:	Approximately 4600 = 3%, 4500 = 5%
Composition:	4600 = 22% Polyester, 78% Vinyl on Polyester. 4500 = 17% Polyester, 83% Vinyl on Polyester.
Fire Classification:	California U.S. Title 19 (small scale), NFPA 101 (Class A Rating), BS 5867 Part 2 Type B Performance, CAN/ULC-S 109-03 (large and small scale), NFPA 701 TM#1 (small scale), IBC Section 803.1.1 (Class A Rating), NFPA 701 TM#2 (large scale)
Bacteria and Fungal Resistance:	ASTM E 2180, ASTM G21, AATCC30 Part 3, ASTM D 3273, GREENGUARD Mold and Bacteria Standard ASTM 6329, includes Microban antimicrobial additives
Acoustical Performance:	4600 = NRC .20 / SAA .23, 4500 = NRC .15 / SAA .17
Card Revision Date:	V17

SheerWeave® Style 4800

Solar Screen | 1% Openness

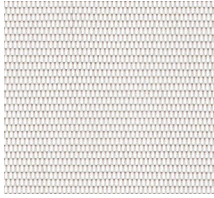
P06 Chalk



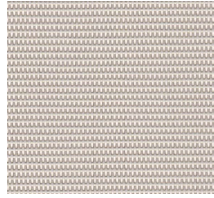
P07 Alabaster



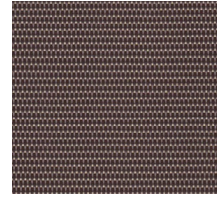
P75 Pearl



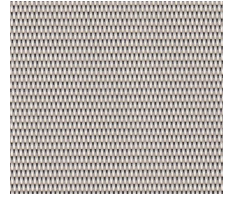
Q97 Sand



Q98 Mocha



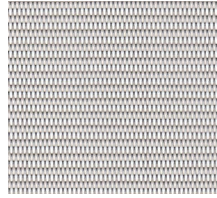
Q99 Taupe



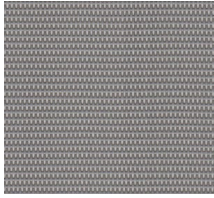
V10 Ebony



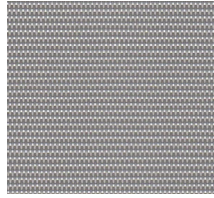
V16 Gray



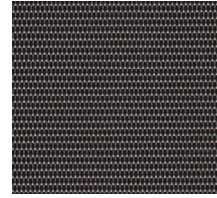
V59 Fleece



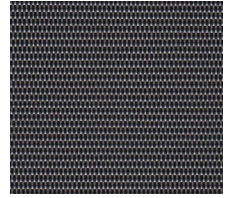
V60 Clay



V61 Mink



V62 Flint



Specification Data

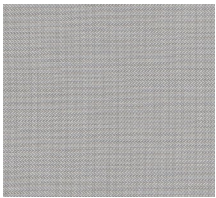
Openness Factor:	Approximately 1%
Composition:	24% Polyester, 76% Vinyl on Polyester
Fire Classification:	California U.S. Title 19 (small scale), NFPA 101 (Class A Rating), BS 5867 Part 2 Type B Performance, CAN/ULC-S 109-03 (large and small scale), NFPA 701 TM#1 (small scale), IBC Section 803.1.1 (Class A Rating), NFPA 701 TM#2 (large scale), CAN/CGSB2-4.162-M80.
Bacteria and Fungal Resistance:	ASTM E 2180, ASTM G21, AATCC30 Part 3, ASTM D 3273, GREENGAURD Mold and Bacteria Standard ASTM 6329, includes Microban antimicrobial additives
Acoustical Performance:	NRC .30 / SAA .31
Card Revision Date:	V16



SheerWeave® Style 4650 / 4550

Solar Screen | 3% & 5% Openness

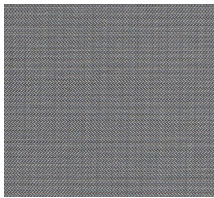
P10 Granite



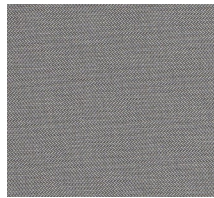
P65 Linen



V45 Coal



V47 Chesnut



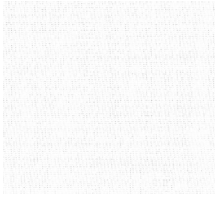
Specification Data

Openness Factor:	Approximately 4650 = 3%, 4550 = 5%
Composition:	17% Polyester, 83% Vinyl on Polyester
Fire Classification:	California U.S. Title 19 (small scale), NFPA 101 (Class A Rating), BS 5867 Part 2 Type B Performance, CAN/ULC-S 109-03 (large and small scale), NFPA 701 TM#1 (small scale), IBC Section 803.1.1 (Class A Rating), NFPA 701 TM#2 (large scale)
Bacteria and Fungal Resistance:	ASTM E 2180, ASTM G21, AATCC30 Part 3, ASTM D 3273, GREENGUARD Mold and Bacteria Standard ASTM 6329 includes Microban antimicrobial additives
Acoustical Performance:	4650 = NRC 0.15 / SAA 0.18, 4550 = NRC 0.10 / SAA 0.11
Card Revision Date:	V17

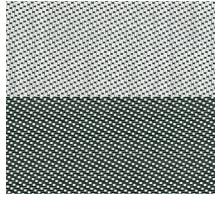
SheerWeave® Style 4901/4903

Solar Screen | 1% & 3% Openness

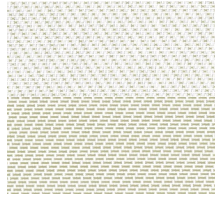
P06 Chalk



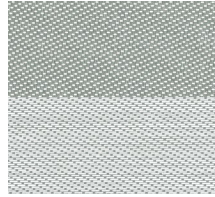
P25 Chalk/Black



P26 Chalk/Wheat



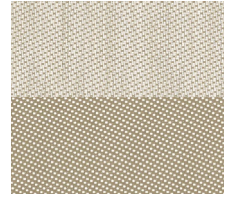
Q07 Kettal Gray



Q16 Tobacco



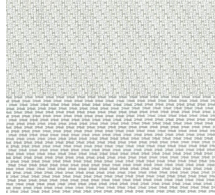
Q22 Flaxen



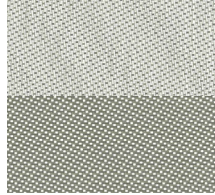
Q23 Whitesands



Q25 Birch



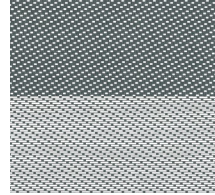
Q26 Cobblestone



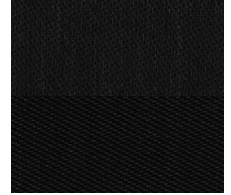
Q27 Soft Gray



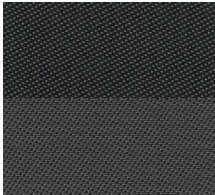
V03 Pewter/Chalk



V10 Ebony



V28 Slate



Specification Data

Openness Factor:	Approximately 4901 = 1% & 4903 = 3%
Composition:	17% Polyester, 83% Vinyl on Polyester
Fire Classification:	California U.S. Title 19 (small scale), NFPA 101 (Class A Rating), BS 5867 Part 2 Type B Performance, CAN/ULC-S 109-03 (large and small scale), NFPA 701 TM#1 (small scale), IBC Section 803.1.1 (Class A Rating), NFPA 701 TM#2 (large scale), CAN/CGSB2-4.162-M80
Bacteria and Fungal Resistance:	ASTM E 2180, ASTM G21, AATCC30 Part 3, ASTM D 3273, GREENGUARD Mold and Bacteria Standard ASTM 6329; includes Microban antimicrobial additives
Acoustical Performance:	4901 = NRC 0.60 / SAA 0.59, 4903 = NRC 0.25 / SAA 0.25
Card Revision Date:	v16



SheerWeave® Basic

Solar Screen | 3% & 5% Openness

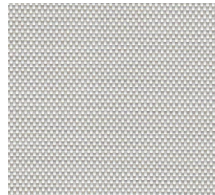
P02 White



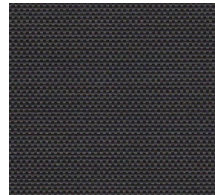
P04 White/Bone



P05 White/Platinum



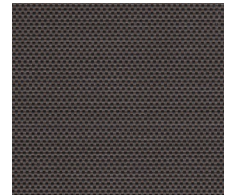
V21 Charcoal



V22 Charcoal/Gray



V24 Charcoal/Chestnut



Specification Data

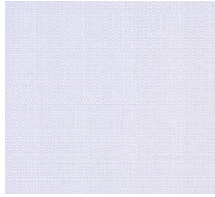
Openness Factor:	Approximately 3% & 5%
Composition:	38% Fiberglass, 62% Vinyl on Fiberglass
Fire Classification:	California U.S. Title 19 (small scale), NFPA 101 (Class A Rating), BS 5867 Part 2 Type B Performance, CAN/ULC-S 109-03 (large and small scale), NFPA 701 TM#1 (small scale), IBC Section 803.1.1 (Class A Rating), NFPA 701 TM#2 (large scale), CAN/CGSB2-4.162-M80.
Bacteria and Fungal Resistance:	ASTM E 2180, ASTM G21 AATCC30 Part 3, ASTM D 3273, GREENGUARD Mold and Bacteria Standard ASTM 6329; includes Microban antimicrobial additives
Acoustical Performance:	3% = NRC .60 / SAA .60, 5% = NRC .10 / SAA .08
Card Revision Date:	V17



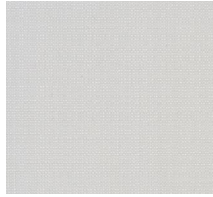
SheerWeave® 7600/7650

Solar Screen | Light Filtering & Blackout

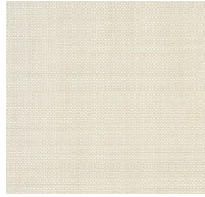
U90 Bright White



U99 Ivory



U91 Shell



U92 Khaki



U93 Dove Gray



U94 Taupe



U95 Thunder



U96 Coffee



U97 Coal



Specification Data

Openness Factor:	Approximately Blackout (7600) & Light Filtering (7650)
Composition:	7600: 45% Polyester, 55% Acrylic Foamed Backing; 7650: 100% Polyester
Fire Classification:	California U.S. Title 19 (small scale), NFPA 701 TM#1 (small scale), BS 5867 Part 2 Type B Performance
Bacteria and Fungal Resistance:	G21-96 AATCC 174-1998 Part II and III
Acoustical Performance:	7600 = NRC .05 / SAA .07, 7650 = NRC .40 / SAA .44
Card Revision Date:	V17B



MIF

Soltis® Master 99

Interior Solar Screen | 3% - 4% Openness

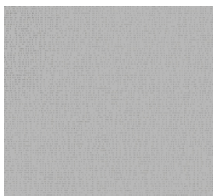
White 99-2055



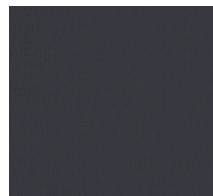
Light Grey 99-2058



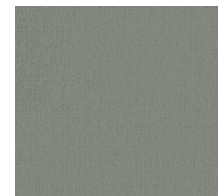
Alu 99-2059



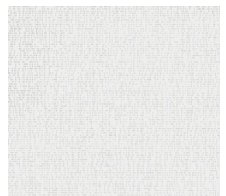
Anthracite 99-2068



Medium Grey 99-2073



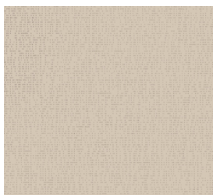
Spume 99-50284



Quartz 99-50285



Sandy Beige 99-50286



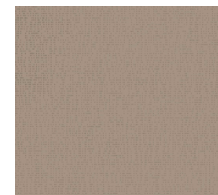
Hemp 99-50287



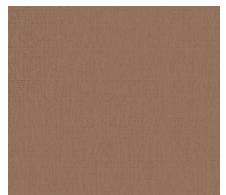
Clay 99-50288



Ash-Brown 99-50289



Chestnut 99-50290



Zenith 99-50291



Apricot 99-50292



Paprika 99-50293



Lotus 99-50294



Bamboo 99-50295



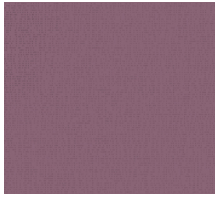
Lilac 99-50296



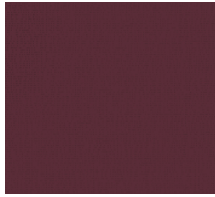
Soltis® Master 99 (continued)

Interior Solar Screen | 3% - 4% Openness

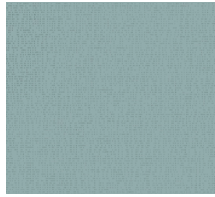
Fig 99-50297



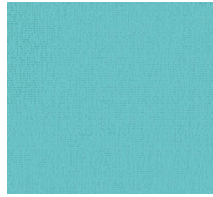
Plum 99-50298



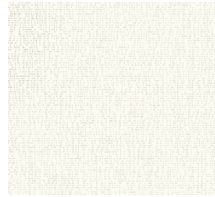
Fjord 99-50299



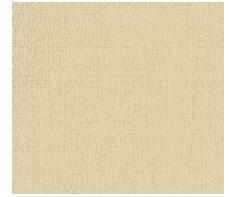
Bermuda 99-50300



White 99-2044



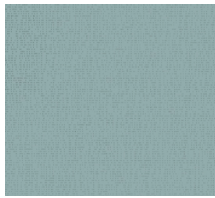
Hemp 99-50265



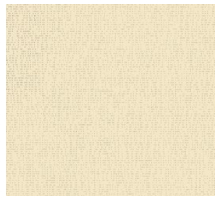
Spume 99-50301



Fjord 99-50302



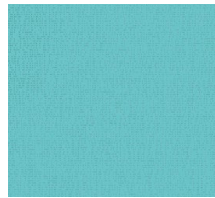
Quartz 99-50303



Clay 99-50305



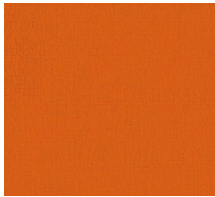
Bermuda 99-50306



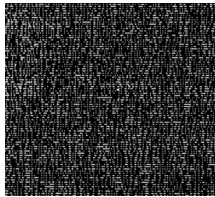
Lotus 99-50307



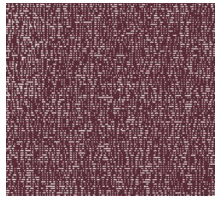
Paprika 99-50308



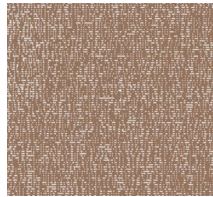
Black 99-2115



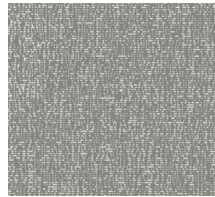
Plum 99-50277



Chestnut 99-50278



Medium Grey 99-50279



Specification Data

Openness Factor:	Approximately 3% & 4%
Composition:	45% High Tenacity Polyester, 55% PVC Coating
Fire Classification:	Method 1 and 2/NFPA 701, CSFM T19, Class A/ASTM E84, B1/DIN 4102-1, BS 7837, BS 5867, Schwerbrennbar-Q1-Tr1/ONORM A 3800-1, M1/UNE 23.727-90, VKF 5.2/SN 198898, 1530.3/AS/NZS, G1/GOST 30244-94, Classe 1 / UNI 9177-87, CAN ULCS109
Euroclass Fire:	B-s2,d0/EN 135801-1
Bacteria and Fungal Resistance:	ASTM G21
Card Revision Date:	Nov 2012/V1.01



M Screen Deco Designer | 3% & 5% Openness

D249 Flagstone



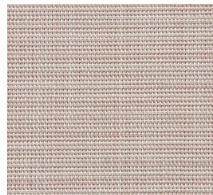
D226 Harvest



D237 Hazelnut



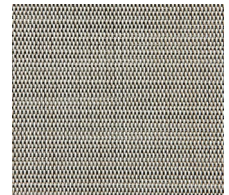
D112 Naturelle



D012 Parchment



D137 River Rock



D212 Tumbleweed



Specification Data

Openness Factor:	Approximately 3% & 5%
Composition:	36% Fiberglass, 64% Vinyl
Fire Classification:	NFPA 701-10 TM#1, California U.S. Title 19, CAN/ULC-S109-03 Small & Large Flame Test
Bacteria and Fungal Resistance:	ASTM E2180 and ASTM G21
Acoustical Performance:	3% = NRC 0.35 / SAA 0.33, 5% = NRC 0.10 / SAA 0.12
Card Revision Date:	02.17v1





S Screen

Designer | 4% Openness

0070C1 Granite



0020D2 Marble



0020D1 Porcelain



0200C1 Jute



0100C2 Cork



0100N5 Papyrus



0610P6 Sesame



0100B6 Ginger



0100P1 Nougat



0610B2 Coffee Bean



0070B1 Peppercorn



0020P1 Seasalt



Specification Data

Openness Factor:	Approximately 4%
Composition:	33.6% Fiberglass, 59.6% Vinyl, 6.8% Polyester
Fire Classification:	NFPA 701-10 TM#1, California U.S. Title 19, CAN/ULC-S109-03 Small & Large Flame Test
Bacteria and Fungal Resistance:	ASTM E2180 and ASTM G21
Acoustical Performance:	NRC 0.15 / SAA 0.14
Card Revision Date:	06.17v1



SheerWeave® Style 5000

Designer | (Openness Varies)

*U12 Linen/Cream (3%)



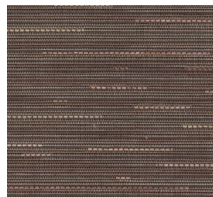
*U11 Linen/Burlap (3%)



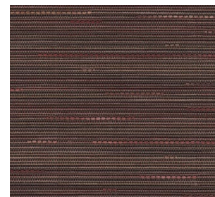
*U10 Linen/Topaz (3%)



*R12 Linen/Cinnamon (3%)



*R11 Linen/Cranberry (3%)



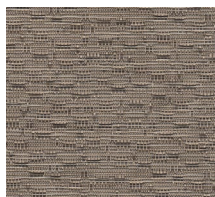
*V88 Linen/Fig (3%)



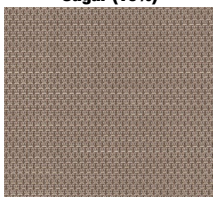
*Q50 Bark/Tiger Oak (7%)



*Q51 Wicker/Mushroom (5%)



*Q53 Honeycomb/Brown Sugar (10%)



*Q94 Tweed/Oatmeal (5%)



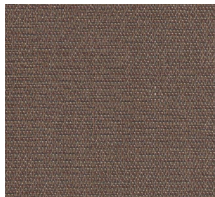
*Q95 Tweed/Buckeye (5%)



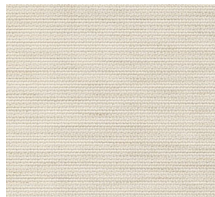
*Q96 Thatch/Wheatgrass (7%)



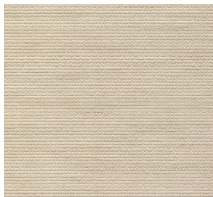
*Q47 Moire/Mocha (7%)



ΩR85 Jute/Parchment (1%)



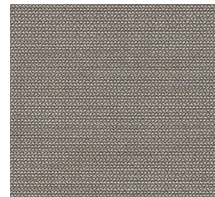
ΩR86 Jute/Flax (1%)



*R87 Jute/Latte (1%)



*R88 Jute/Coffee (1%)



‡R89 Chenille/Marshmallow (3%)



SheerWeave® Style 5000

Designer | (Openness Varies)

*R90 Chenille/Pearl (3%)



*R91 Chenille/Honey (3%)



*R92 Chenille/Driftwood (5%)



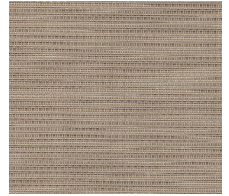
*R93 Wicker/Straw (3%)



*R95 Bark/Sienna (5%)



*Q46 Bamboo/Wheat (7%)



‡Q43 Marble/Sand (5%)



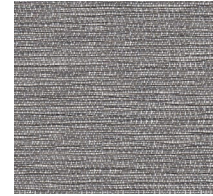
‡P60 Bamboo/Birch (10%)



‡U16 Crepe/Toasted Coconut (10%)



‡U24 Seaglass/Silver (10%)



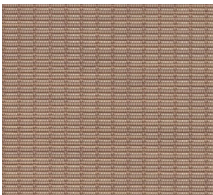
‡U28 Seaglass/Chardonnay (10%)



‡U29 Seaglass/Crystal (10%)



*Q49 Rattan/Umber (7%)



†Q61 Bark/Ash (5%)



†Q62 Bark/Pewter (5%)



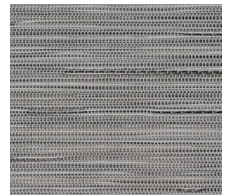
†Q63 Linen/Pearl (5%)



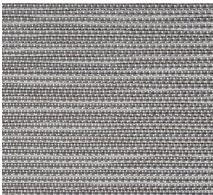
†Q64 Linen/Taupe (5%)



†Q65 Linen/Clay (7%)



*Q66 Metro/Platinum (5%)



Specification Data

Openness Factor:	Approximately between 1% & 10%
Composition:	Ask Representative for Swatch Card
Fire Classification:	*California Technical Bulletin 117 Sect. E. Part 1, NFPA 101 (Class A Rating), and IBC Section 803.1.1 (Class A Rating); †California Technical Bulletin 117 Sect. E. Part 1, NFPA 701 TM#1 (small scale), NFPA 101 (Class A Rating), and IBC Section 803.1.1 (Class A Rating); ‡California US Title 19 (small scale), NFPA 701 TM#1 (small and large scale), BS 5867 Part 2 Type B Performance, NFPA 101 (Class A Rating), and IBC Section 803.1.1 (Class A Rating); †California Technical Bulletin 117 Sect. E. Part 1, NFPA 101 (Class A Rating), ASTM E 84 (Class 1) and IBC Section 803.1.1 (Class A Rating)
Bacteria and Fungal Resistance:	ASTM E 2180, ASTM G21, AATCC30 Part 3, ASTM D 3273, GREENGAURD Mold and Bacteria Standard ASTM 6329, includes Microban antimicrobial additives
Acoustical Performance:	NRC .15 / SAA .16
Card Revision Date:	V18



Vizela

Translucent | 1% Openness

06.00 Blanc



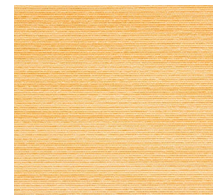
06.08 Chartreux



06.09 Loutre



06.18 Mississippi



06.23 Sahel



Specification Data

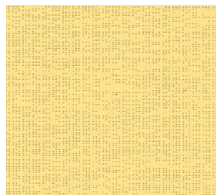
Openness Factor:	Approximately 1%
Composition:	100% Fiberglass / EVA Coating
Fire Classification:	NFPA 701-10 TM#1, California U.S. Title 19, CAN/ULC-S109-03 Small & Large Flame Test
Bacteria and Fungal Resistance:	ASTM E2180, ASTM G21
Acoustical Performance:	NRC: 0.35, SAA: 0.33
Card Revision Date:	10.17v1



Pepper 92-2012



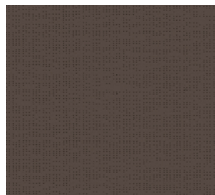
Chick 92-2013



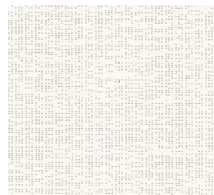
Green Tree 92-2039



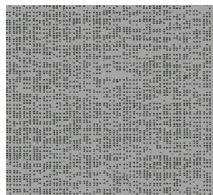
Bronze 92-2043



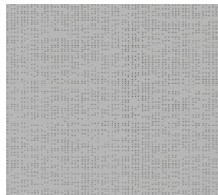
White 92-2044



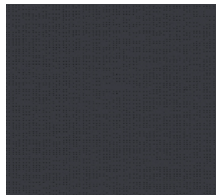
Beaten-Metal 92-2045



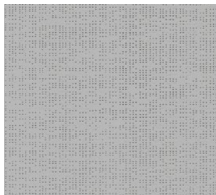
Alu/Oat 92-2046



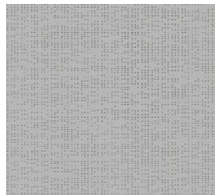
Anthracite 92-2047



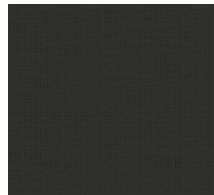
Alu/Alu 92-2048



Alu/White 92-2051



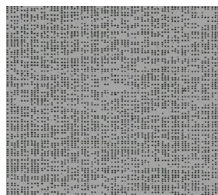
Black 92-2053



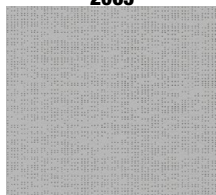
Interferential Gray 92-2065



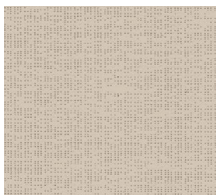
Alu/Anthracite 92-2068



Alu/Medium Gray 92-2065



Sandy Beige 92-2135



Walnut Stain 92-2137



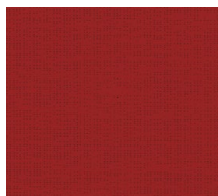
Cocoa 92-2148



Beetle 92-2149



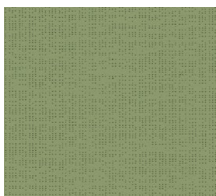
Velvet Red 92-2152



Aniseed 92-2157



Moss Green 92-2158



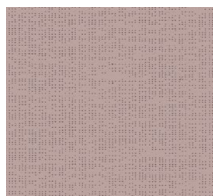
Lagoon 92-2160



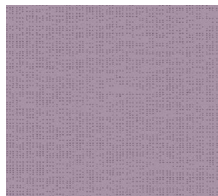
Midnight Blue 92-2161



Turtledove 92-2163



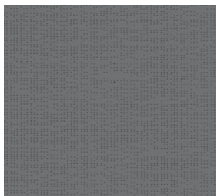
Violet Parama 92-2164



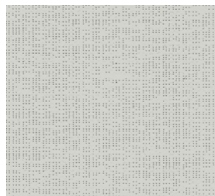
Buttercup 92-2166



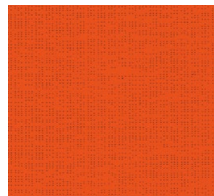
Concrete 92-2167



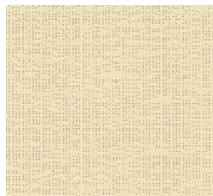
Boulder 92-2171



Carrot 92-2172



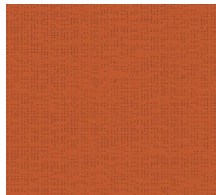
Champagne 92-2175



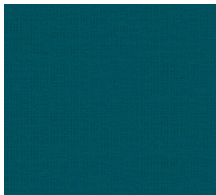
Muscat 92-50260



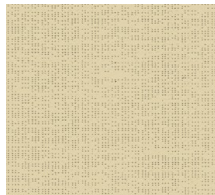
Caramel 92-50261



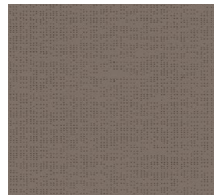
Dark Teal 92-50264



Hemp 92-50265



Havana-Brown 92-50266



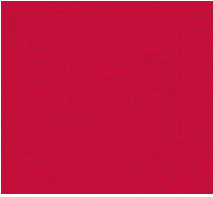
Cotto 92-50267



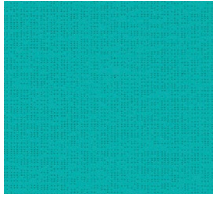
Soltis® Perform 92 (continued)

Exterior | 3% - 4% Openness

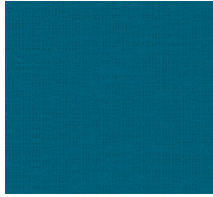
Grenadine 92-50268



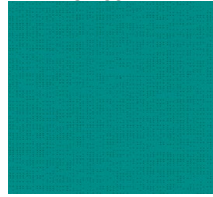
Hawaii 92-50269



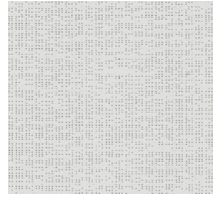
Thistle 92-50270



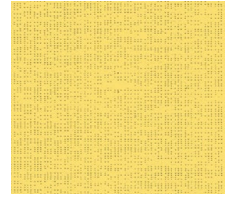
Intense Turquoise 92-50271



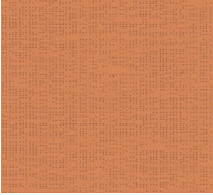
Cloud 92-50272



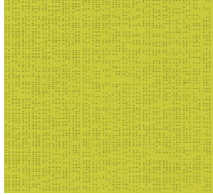
Gold 92-50273



Copper 92-50274



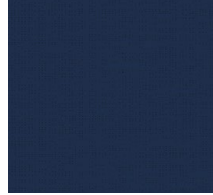
Bamboo 92-50333



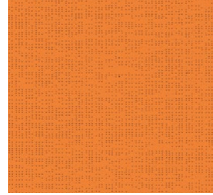
Plum 92-50336



Navy 92-50342



Orange 92-8204



Red 92-8255



Specification Data

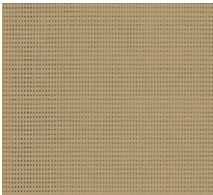
Openness Factor:	Approximately 3% & 4%
Composition:	45% High Tenacity Polyester, 55% PVC Coating
Fire Classification:	B1/DIN 4102-1, BS 7837, BS 5867, Schwerbrennbar-Q1-Tr1/ONORM A 3800-1, Classe1/UNI9177-87, M1/UNE23.727-90, VKF 5.2/SN 198898, 1530.3/AS/NZS, G1/GOST 30244-94, Method 1/NFPA 701 CSFM T19, Class A/ASTM E84
Euroclass Fire:	B-s2,d0/EN 135801-1
Bacteria and Fungal Resistance:	ASTM G21
Card Revision Date:	JUILLET 2013/V2.01



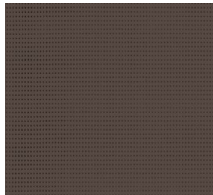
Soltis® Horizon 86

Exterior | 14% Openness

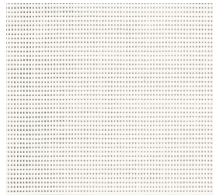
Pepper 86-2012



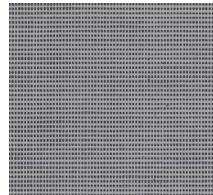
Bronze 86-2043



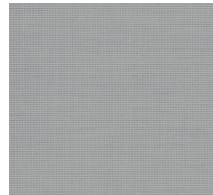
White 86-2044



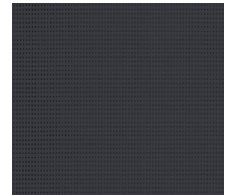
Beaten-Metal 86-2045



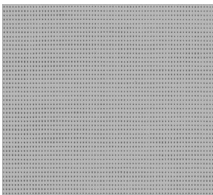
Alu/Oat 86-2046



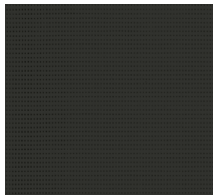
Anthracite 86-2047



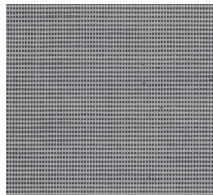
Alu/Alu 86-2048



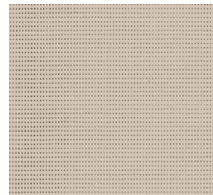
Black 86-2053



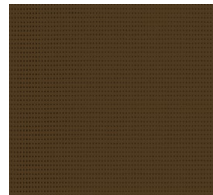
Alu/Anthracite 86-2068



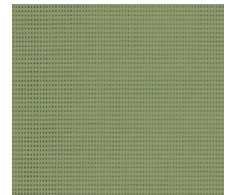
Sandy/Beige 86-2135



Cocoa 86-2148



Moss Green 86-2158



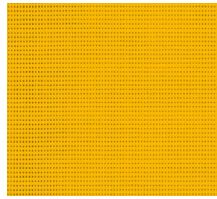
Soltis® Horizon 86 (continued)

Exterior | 14% Openness

Midnight Blue 86-2161



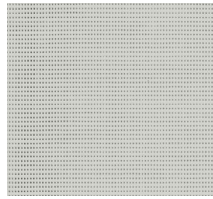
Buttercup 86-2166



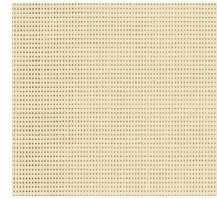
Concrete 86-2167



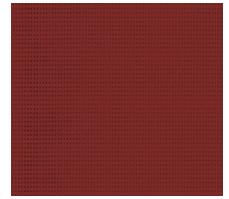
Boulder 86-2171



Champagne 86-2175



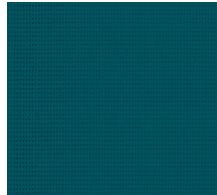
Muscat 86-50260



Caramel 86-50261



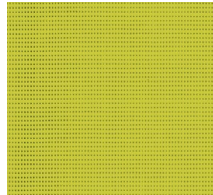
Dark Teal 86-50264



Intense Turquoise
86-50271



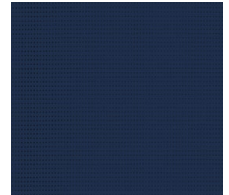
Bamboo 86-50333



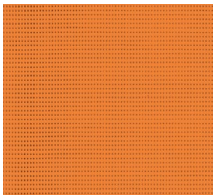
Plum 86-50336



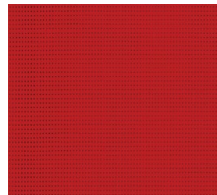
Navy 86-50342



Orange 86-8204



Red 86-8255



Specification Data

Openness Factor:	Approximately 14%
Composition:	45% High Tenacity Polyester, 55% PVC Coating
Fire Classification:	B1/DIN 4102-1, BS 7837, BS 5867, Schwerbrennbar-Q1-Tr1/ONORM A 3800-1, Classe1/UNI9177-87, M1/UNE23.727-90, VKF 5.2/SN 198898, 1530.3/AS/NZS, G1/GOST 30244-94, Method 1/NFPA 701 CSFM T19, Class A/ASTM E84
Euroclass Fire:	B-s2,d0/EN 135801-1
Bacteria and Fungal Resistance:	ASTM G21
Card Revision Date:	JUILLET 2013/V2.01

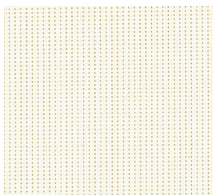


MERMET

Vienne

Exterior | 5% & 10% Openness

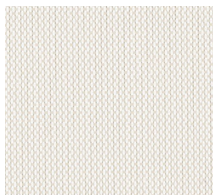
902902 White/White



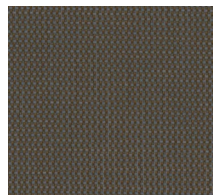
902907 White/Pearl



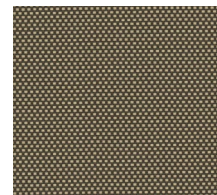
902920 White/Linen



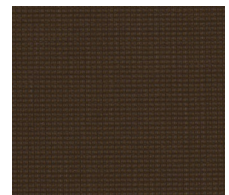
961901 Cocoa/Grey



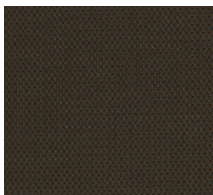
961923 Cocoa/Straw



961961 Cocoa/Cocoa



930961 Charcoal/Cocoa



930930 Charcoal/Charcoal



Specification Data

Openness Factor:	Approximately 5% & 10%
Composition:	42% Fiberglass / 58% Vinyl
Fire Classification:	NFPA 701-10 TM#1, California U.S. Title 19, CAN/ULC-S109-03 Small Flame Test & Large Flame Test
Bacteria and Fungal Resistance:	ASTM E2180, ASTM G21
Acoustical Performance:	5%: NRC: 0.10, SAA: 0.13, 10%: NRC: 0.05, SAA: 0.07
Card Revision Date:	07.17v1

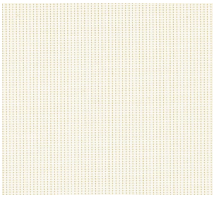




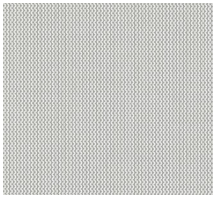
Natte

Exterior | 5% & 10% Openness

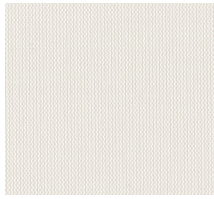
902902 White/White



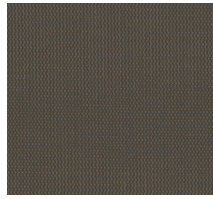
902907 White/Pearl



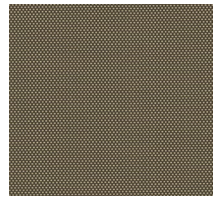
902920 White/Linen



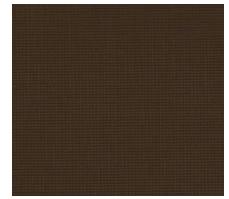
961901 Cocoa/Grey



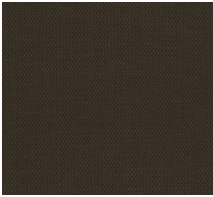
961923 Cocoa/Straw



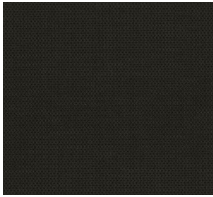
961961 Cocoa/Cocoa



930961 Charcoal/Cocoa



930930 Charcoal/Charcoal



Specification Data

Openness Factor:	Approximately 5% & 10
Composition:	42% Fiberglass / 58% Vinyl
Fire Classification:	NFPA 701-10 TM#1, California U.S. Title 19, CAN/ULC-S109-03 Small Flame Test & Large Flame Test
Bacteria and Fungal Resistance:	ASTM E2180, ASTM G21
Acoustical Performance:	5%: NRC: 0.05, SAA: 0.06, 10%: NRC: 0.05, SAA: 0.04
Card Revision Date:	7.17.V1

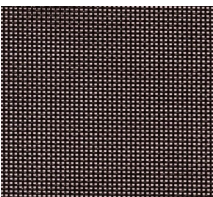


PHIFER

SunTex 80

Exterior | 25% Openness

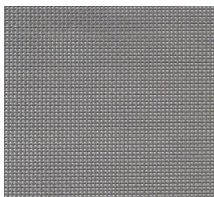
Brown



Black



Grey



Stucco



Beige



Dark Bronze



Specification Data

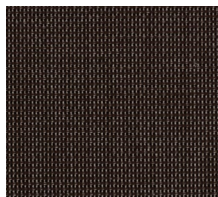
Openness Factor:	Approximately 25%
Composition:	31% Polyester / 69% Vinyl on Polyester
Fire Classification:	California Technical Bulletin 117-2013, NFPA 101 (Class A Rating), IBC Section 803.1.1 (Class A Rating) and CAN/ULC-S 109-03 (large scale)
Bacteria and Fungal Resistance:	ASTM E 2180 and ASTM G21; includes Microban antimicrobial additives
Card Revision Date:	V17



SunTex 90

Exterior | 10% Openness

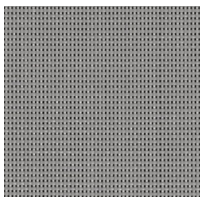
Brown



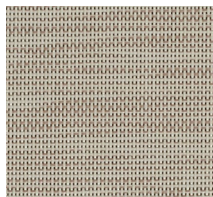
Black



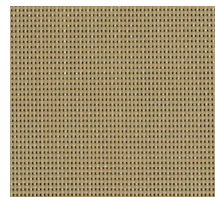
Grey



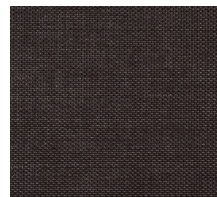
Stucco



Beige



Dark Bronze



Specification Data

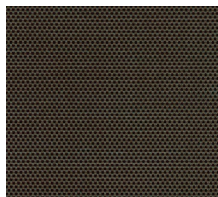
Openness Factor:	Approximately 10%
Composition:	31% Polyester / 69% Vinyl on Polyester
Fire Classification:	California Technical Bulletin 117 - 2013 Section 1, NFPA 101 (Class A Rating), IBC Section 803.1.1 (Class A Rating) and CAN/ULC-S 109-03 (large scale)
Bacteria and Fungal Resistance:	ASTM E 2180 and ASTM G21; includes Microban antimicrobial additives
Card Revision Date:	V17



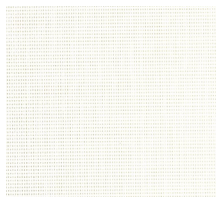
SunTex 95

Exterior | 5% Openness

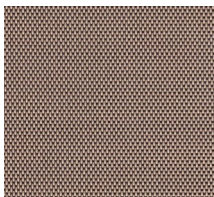
Dark Bronze



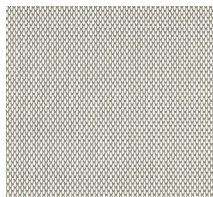
White



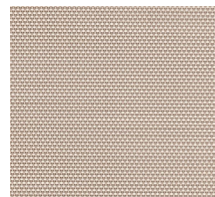
Mocha



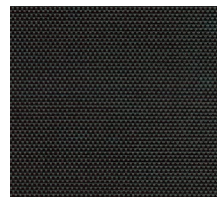
White/Grey



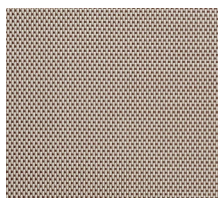
Alpaca



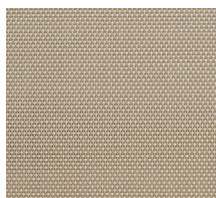
Black



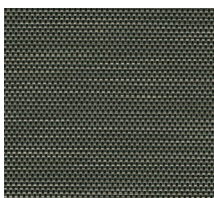
Chestnut



Sand



Carbon



Specification Data

Openness Factor:	Approximately 5%
Composition:	28% Polyester / 72% Vinyl on Polyester
Fire Classification:	California Technical Bulletin 117-2013, NFPA 101 (Class A Rating), IBC Section 803.1.1 (Class A Rating) and CAN/ULC-S 109-03 (large scale)
Bacteria and Fungal Resistance:	ASTM E 2180 and ASTM G21; includes Microban antimicrobial additives
Card Revision Date:	V17





Flocké

Blackout Fabric | Opaque

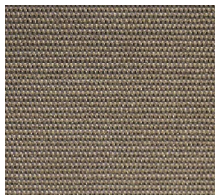
0600 Blanc



0608 Chartreux



0609 Loutre



0618 Mississippi



0623 Sahel



Specification Data

Openness Factor:	Opaque
Composition:	42% Fiberglass / 51% Acrylic, 7% Cotton Flocked Backing
Fire Classification:	NFPA 701-10 TM#1, California U.S. Title 19, CAN/ULC-S109 Small & Large scale
Card Revision Date:	06.16.v1



SheerWeave® Style 7000

Blackout Fabric | Opaque

P62 White



P64 Sand



P63 Birch



Q57 Wheat



Q58 Mushroom



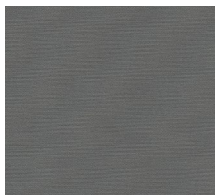
U67 Canvas



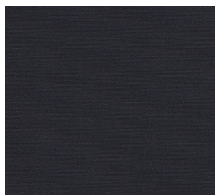
U69 Cocoa



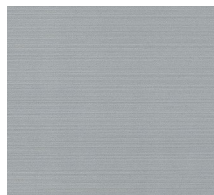
V41 Canyon



V39 Graphite



U40 Onyx



Openness Factor:	Opaque
Composition:	100% Polyester with Acrylic Flocked Backing
Fire Classification:	California U.S. Title 19 (small scale), BS 5867 Part 2 Type B Performance, IBC Section 803.1.1 (Class A Rating), NFPA 701 TM#1 (small scale), CAN/ULC-S 109-03 (large and small scale), CAN/CGSB2-4.162-M80
Bacteria and Fungal Resistance:	ASTM G21-96, AATCC 174-1998 Part II and III
Acoustical Performance:	NRC .10 / SAA .08
Card Revision Date:	V16B

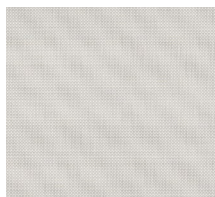
SheerWeave® Style 7100

Blackout Fabric | Opaque

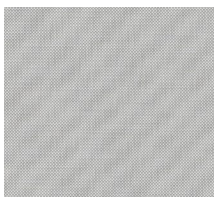
P02 White



P04 White / Bone



P05 White / Platinum



Q05 Bone



Q06 Bone / Platinum



V21 Charcoal



Specification Data

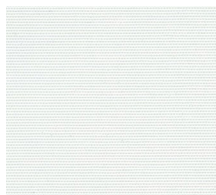
Openness Factor:	Opaque
Composition:	Vinyl coated fiberglass fabric, Laminated with a two-ply 100% PVC blackout film.
Fire Classification:	California U.S. Title 19 (small scale), NFPA 101 (Class A Rating), BS 5867 Part 2 Type B Performance, NFPA 701 TM#1 (small scale), IBC Section 803.1.1 (Class A Rating), NFPA 701 TM#2 (large scale)
Bacteria and Fungal Resistance:	ASTM E 2180, ASTM G21, AATCC30 Part 3, ASTM D 3273, GREENGAURD Mold and Bacteria Standard ASTM 6329, includes Microban antimicrobial additives
Acoustical Performance:	NRC .05 / SAA .03
Card Revision Date:	V17



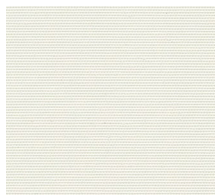
SheerWeave® Style 7500/7500R*

Blackout Fabric | Opaque

R13 Ice



R39 Cloud



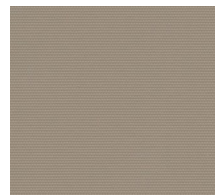
R40 Porcelain



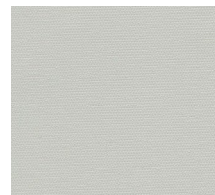
R17 Dune



R19 Stone



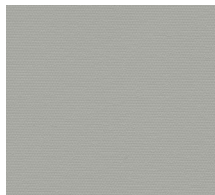
R41 Limestone



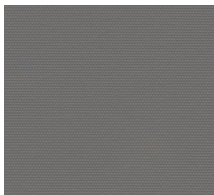
R97 Mist



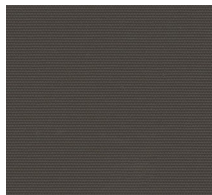
R43 Tundra



R20 Odyssey



R21 Orient*



R22 Midnight*



*Back is now available as white or matching color to front

Specification Data

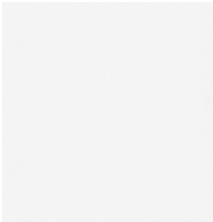
Openness Factor:	Opaque
Composition:	100% Polyester with Acrylic Coating
Fire Classification (7500):	California U.S. Title 19 (small scale), CAN/ULC-S 109-03 (large and small scale), BS 5867 Part 2 Type B Performance, NFPA 701 TM#1 (small scale), IBC Section 803.1.1 (Class A Rating), NFPA 101 (Class A Rating)
Fire Classification (7500R):	California Technical Bulletin 117E, NFPA 101 (Class A Rating)
Bacteria and Fungal Resistance:	ASTM E 2180, ASTM G21
Acoustical Performance:	NRC .00 / SAA .03
Card Revision Date:	V18



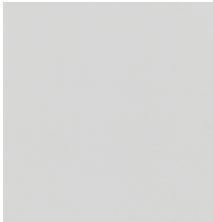
Avila Twilight*

Blackout Fabric | Opaque

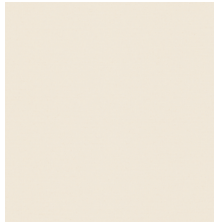
000002 White



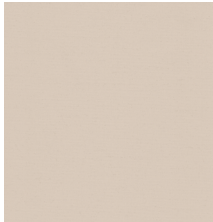
000016 Chalk



000017 Canvas



000020 Linen



C00015 Khaki



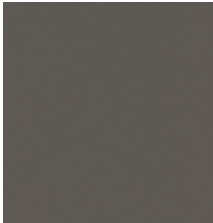
000014 Marine



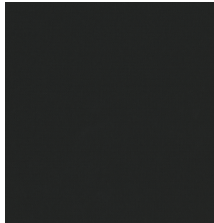
001001 Pewter*



030030 Charcoal*



060060 Black*



*Back is now available as white or matching color to front

Specification Data

Openness Factor:	Opaque
Composition:	37.5% Polyester/ 62.5% Acrylic
Fire Classification:	NFPA 701-10 TM#1, California U.S. Title 19, CAN/ULC-S109 Small & Large scale
Bacteria and Fungal Resistance:	ASTM E2180
Acoustical Performance:	NRC: 0.05, SAA: 0.03
Card Revision Date:	4.17.v2

