



PREMIUM SHADES

NORTH AMERICAN MANUFACTURING





OUR COMPANY

Roll-A-Shade® has been manufacturing, installing and servicing window shades for 35 years. Our superior reputation spans all industries with the highest expertise in restaurant, convenience, financial, grocery and retail.

NATIONAL ACCOUNT PROGRAM

Roll-A-Shade® provides consistent brand management throughout North America. Consistency between locations, both corporate and franchise, is of the utmost importance. Simply specify your shade system, fabrics and colors and we will custom fabricate each and every shade to your exact specifications. Our in-house Facilities Department is integrated with procurement solutions such as Ariba®, Corrigo®, ServiceChannel®, Big Sky®, Facility Source®, Versaise®, and Expesite®. All Roll-A-Shade® products are installed by fully trained and insured professionals.



TABLE OF CONTENTS

INTERACTIVE LINKS BELOW

MANUFACTURING CAPABILITIES.....	4
ARCHITECTURE.....	5
GOING GREEN	6-7
CONTROLS & AUTOMATION.....	8-9
ECLIPSE AUTOMATED SUN CONTROL	10-11
PLUS+ SHADE.....	12-15
INFINITY SHADE	16-19
CONTRACT PLUS+	20-23
CABLE GUIDE	24-27
ZIPSHADE.....	28-31
CHOOSING THE RIGHT FABRIC	32-33
BRANDING	34-35



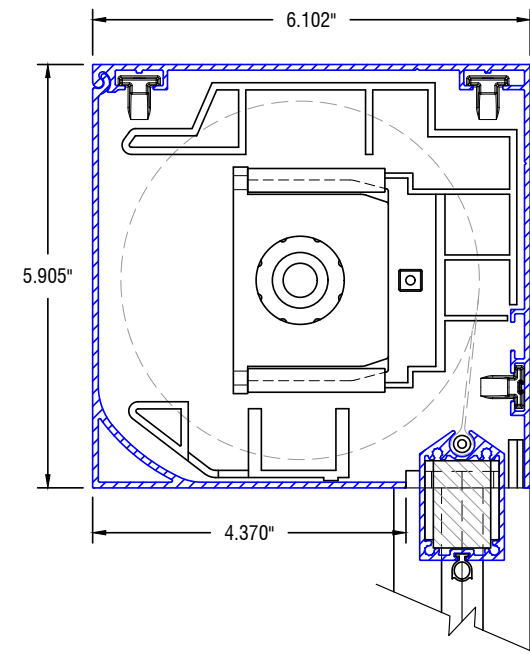
MANUFACTURING CAPABILITIES

Roll-A-Shade® maintains two innovative, state of the art manufacturing facilities. By employing skilled craftsmen, Roll-A-Shade® has the capabilities to manufacture custom roller shades to your strict specifications while maintaining a high standard of quality.

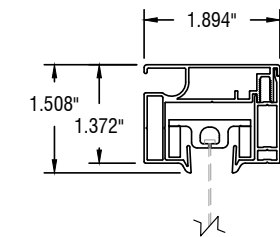
OUR MANUFACTURING CAPABILITIES INCLUDE

- Ultra Sonic Cutting Technology to cauterize and seal fabric edges
- Crush Cutting Technology to seal fiberglass fabrics
- Light box inspection to verify fabric quality
- One of the largest automated cutting tables in the country
- Automated metal cutting station

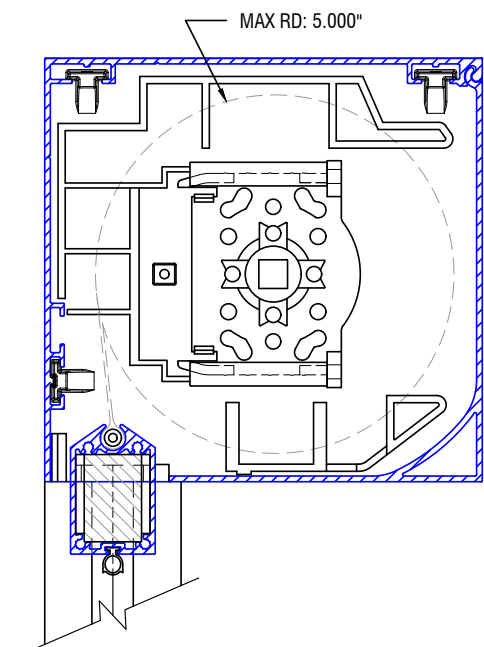
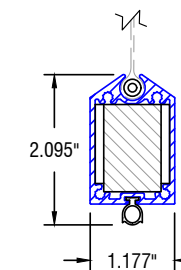
Roll-A-Shade's unique CRM software puts project management at the forefront allowing our skilled project management team to efficiently and effectively manage every project, large or small. Expertly written manufacturing software insures that all shade systems are manufactured to your exact specifications. By implementing a strict quality control program, each shade is checked for quality during multiple stages of the production process.



IDLER PROFILE



OPEN SIDE CHANNEL PROFILE



ARCHI TECTURE

Roll-A-Shade® Architectural manages large contract and specialty commercial projects nationwide. The Architectural team has developed strong relationships within the Architectural & Design community all over the country, working closely with firms from the early design phases to project completion. Utilizing the industry's latest design software, Roll-A-Shade® Architectural offers professional submittal packages, including full system overviews and wiring diagrams for motorized applications. As with every Roll-A-Shade® project, the architectural team offers post-installation service and support throughout the duration of the Roll-A-Shade® manufacturer's warranty.

GOING GREEN



Phifer SheerWeave fabrics are the only shade fabrics in the world to include Microban protection. Microban antimicrobial protection works continuously to inhibit the growth of bacteria, mold and mildew that can cause stains, odors and product deterioration.

- Microban antimicrobial protection is infused into Phifer SheerWeave sun control fabrics for lasting protection that won't wash off or wear away for the lifetime of the shade
- SheerWeave fabrics infused with Microban antimicrobial technology are ideal for any commercial or residential environment where microbes are a concern, including spaces such as bathrooms, found in Healthcare, Hospitality, Home, Office, Schools and Institutions
- Most SheerWeave fabrics include Microban antimicrobial product protection
- Microban is the leading technology in antibacterial/antifungal protection

Look for the Microban logo in your fabric specifications.



DOW ECOLIBRIUM Bio-Based Plasticizers offer a renewable alternative to traditional petroleum based plasticizers for a more sustainable option. This unique green technology is exclusive to Phifer for the window treatment industry and can only be found in SheerWeave fabrics.

ECOLIBRIUM BENEFITS INCLUDE

- Lower greenhouse gas emissions as much as 40% vs. existing PVC compounds
- 98% of the plasticizer is derived from non fossil fuel based feedstock
- Lower carbon footprint
- Phthalate-free
- RoHS compliant
- LEED credits for rapidly renewable content may be available
- Ability for compound to be recycled in a standard vinyl stream
- USDA certified bio-based product

SheerWeave fabrics manufactured with DOW ECOLIBRIUM maintain all of the established benefits of traditional vinyl such as durability, cleanability and fabric longevity.

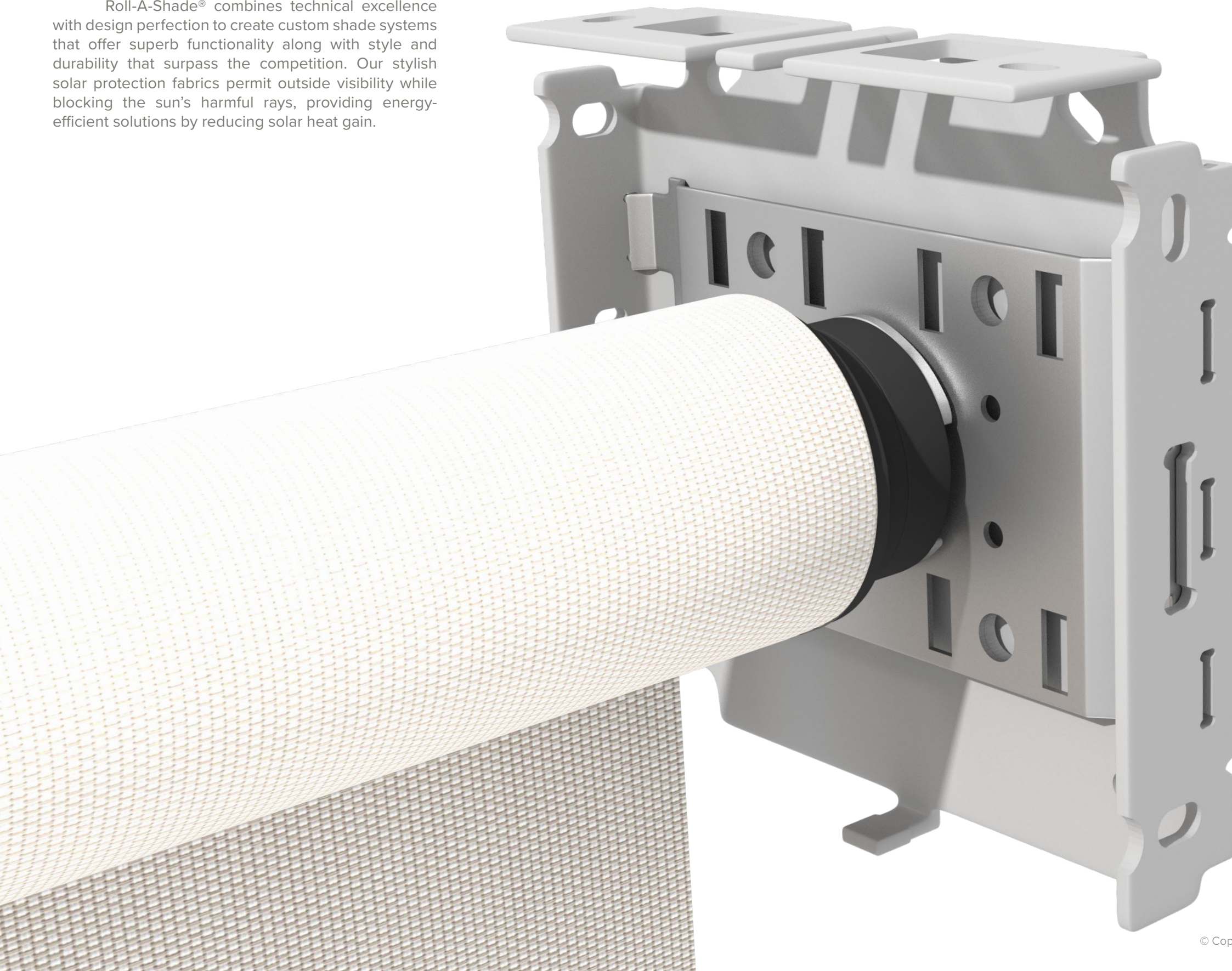


More Sustainable products made for a circular economy. Cradle to Cradle Certified™ is a globally recognized measure of safer, more sustainable products made for the circular economy. The program also recognizes that any manufacturer's knowledge may vary widely regarding the chemicals used in a product, the extent to which the materials in a product can be reused in biological or technical cycles, and the energy and water used to produce a product. The goal of continuous improvement is not “zero” or simply reducing the human and environmental impact of a product, but instead combines the progressive reduction of “bad” with the increase in “good.”

Cradle to Cradle Certified™ Assessment Categories. Each certification level represents increasingly rigorous achievement across five critical performance categories: Material Health, Material Reutilization, Renewable Energy and Carbon Management, Water Stewardship, and Social Fairness.

CONTROLS & AUTOMATION

Roll-A-Shade® combines technical excellence with design perfection to create custom shade systems that offer superb functionality along with style and durability that surpass the competition. Our stylish solar protection fabrics permit outside visibility while blocking the sun's harmful rays, providing energy-efficient solutions by reducing solar heat gain.



RADIO

When combined with battery and solar power options, radio controlled shades truly are wire free. There are a multitude of radio control options including wireless wall switches, hand held remote controls, sun sensors and timers. Radio controlled shades are great in retrofit and remodel projects. Radio shades can be operated from virtually anywhere without direct line of sight. Similar to how a garage door opener operates, radio signals travel through walls and make it possible to control multiple coverings alone or as a group.

INTELLIGENT SHADE NETWORK

Roll-A-Shade's Intelligent Shade Network utilizes intelligent motor technology to provide a comprehensive sun control solution for every environment. The intelligent motor design features an on board microprocessor and a digital encoder, which allows a wide range of features to be easily programmed.

4-WIRE

In new construction or renovations, 4-Wire Motor Systems provide simple and reliable control for installations that do not require complex management solutions. A 4-Wire Motor System links the control device to the motor using electrical wires carrying power and limiting the switch to the source of control. The common motor options available for these systems are durable and dependable, and feature a wide variety of torques and speeds which are a beneficial resource for interior or exterior motorized shading applications.

WE OFFER A VARIETY OF CONTROL OPTIONS

- Hand-held remotes
- Wireless wall switches
- Wind sensors
- Sun sensors
- Third-party automation systems
- Google Home, Alexa & Control 4



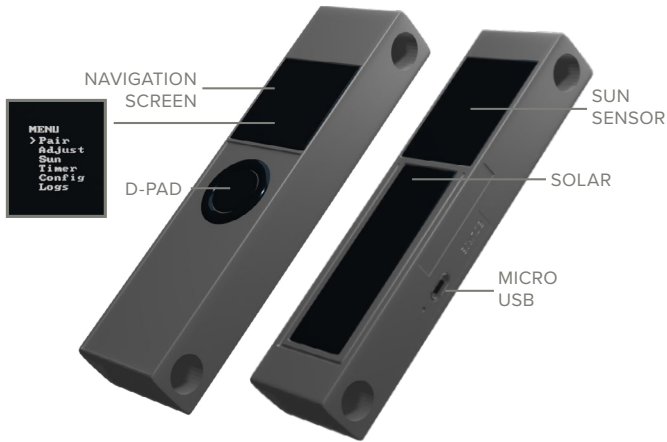
amazon alexa

Control 4

ECLIPSE

AUTOMATED SUN CONTROL

The Eclipse is a cost effective accessory to your motorized shades. The Eclipse sun sensor uses real time sun exposure data to raise and lower shades automatically. This touchless shading system ensures customers & employees do not have to constantly raise and lower shades throughout the day as sun exposure changes. Equipped with a weekday and weekend timer, shades can be programmed to your operating hours as well. The Eclipse can be used as a remote when necessary and can be paired with a wall switch should a manual override be needed.



EASE OF NAVIGATION

The Eclipse menu screen allows for ease of navigation through the complete list of programming options and settings. The menu features a list of programmable options including an adjustable timer. The timer allows for unique weekend and weekday sun up and sun down shade settings.

WIRELESS

Uses wireless technology to communicate with your shade systems. Features wireless installation.

SOLAR POWERED

The Eclipse is equipped with a solar recharge panel that eliminates the need to change batteries or install wires. Micro USB cable included for initial charge.



TECHNICAL SPECIFICATIONS

POWER:
Solar powered

CONTROL:
Wireless

THRESHOLD:
Sun level threshold adjustable from 0 klux to 100 klux

APPROVALS:
FCC

MOUNTING CONFIGURATION:
Vertical or Horizontal

DIMENSIONS:
4.95" L (125.7mm) x 1.26" W (32mm) x 0.67" D (17mm)

FIVE YEAR WARRANTY

WIRELESS | SOLAR POWERED | NO ELECTRICIAN NEEDED | EASY TO INSTALL

PLUS⁺ SHADE

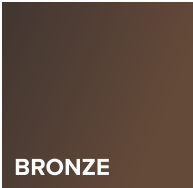
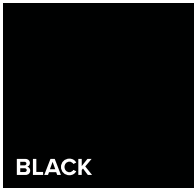




MANUAL & MOTORIZED

INTERIOR SYSTEMS

The Plus+ Shade is a premium grade commercial system that is designed to provide sun control while maintaining aesthetics.

The Plus+ Shade delivers a modern and polished look constructed from extruded aluminum, durable brackets, and mounting hardware. The Plus+ Shade is designed to last long term with our secure installation process. Designed to be the most versatile Roll-A-Shade® system with multiple fascia & bracket options, linked capabilities, large size ranges, and dual shade filtering.

MOTORIZATION/AUTOMATION INTEGRATION POSSIBLE

 BRONZE	 BLACK	 WHITE
 SILVER METALLIC	 ANODIZED	 CUSTOM

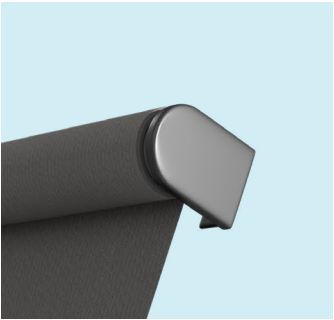
COLOR OPTIONS

POWDER COATED

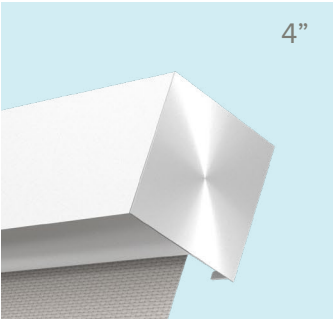
Providing a protective layer with polyester or epoxy powder. Get the satisfaction of your system looking new and protected.

ANODIZED

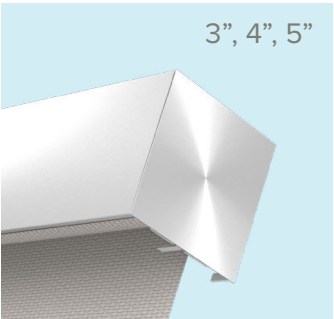
Anodizing is an electrochemical process that converts the metal surface into a decorative, durable, corrosion-resistant, anodic oxide finish.



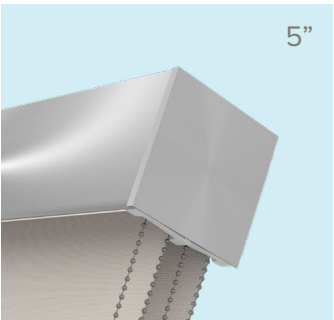
OPEN ROLL



FASCIA BOTTOM



FASCIA TOP



DUAL



plus shades

INFINITY SHADE

MANUAL & MOTORIZED

INTERIOR SYSTEMS

Our Infinity™ Shade System is a sleek, modern, commercial system that has been designed to minimize light gaps and compliment modern décor. The unique, polished Infinity™ bracket features a smooth, flush finish and conceals the appearance of the clutch mechanism perfectly. This cost-effective shade solution is specially designed for 2” retail mullions. Available in two sizes and two colors, this shade system is ideal for a full range of sizes.

All shade systems provide protection against fading product, furniture, or appliances due to heat and sun exposure. Increase the comfort levels of your customers and employees by reducing glare and heat during daylight hours.

MOTORIZATION/AUTOMATION INTEGRATION POSSIBLE

BLACK

WHITE

ANODIZED

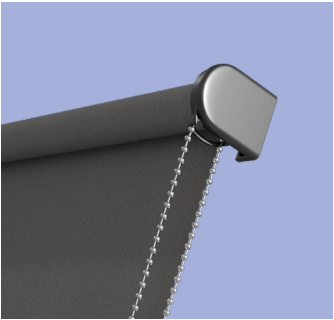
COLOR OPTIONS

POWDER COATED

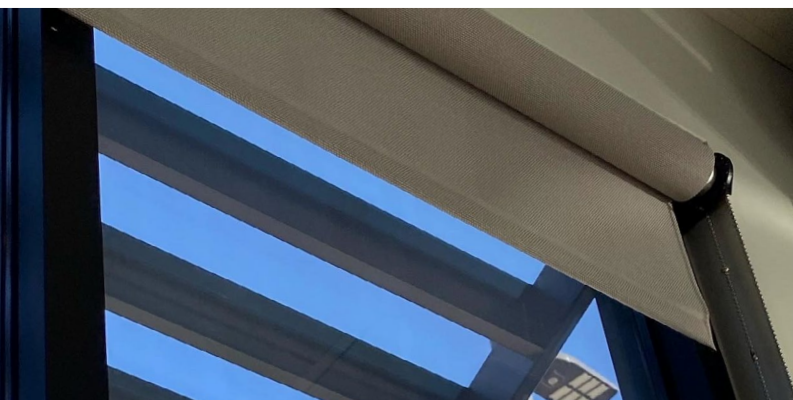
Providing a protective layer with polyester or epoxy powder. Get the satisfaction of your system looking new and protected.

ANODIZED

Anodizing is an electrochemical process that converts the metal surface into a decorative, durable, corrosion-resistant, anodic oxide finish.



OPEN ROLL



CONTRACT PLUS⁺

MANUAL & MOTORIZED

INTERIOR SYSTEMS

Designed specifically for the commercial industry, this robust system is heavy duty and can accommodate the most sophisticated specifications.

Architectural grade quality to meet the performance requirements of any commercial application in both manual or motorized with enclosed headboxes, extra-large shades, fascias, open roll, and linked 7” motorization. Contract Plus+ commercial-grade shading solutions ensure design consistency throughout your building and feature our superior quality, service, and installation guarantee.

MOTORIZATION/AUTOMATION INTEGRATION POSSIBLE

BRONZE

BLACK

WHITE

ANODIZED

CUSTOM

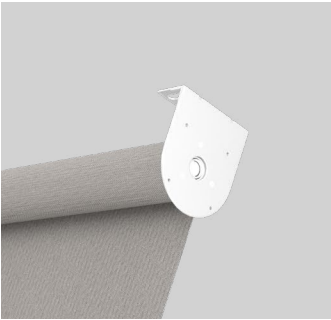
COLOR OPTIONS

POWDER COATED

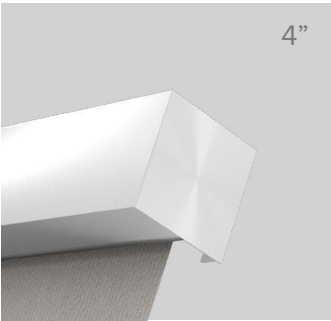
Providing a protective layer with polyester or epoxy powder. Get the satisfaction of your system looking new and protected.

ANODIZED

Anodizing is an electrochemical process that converts the metal surface into a decorative, durable, corrosion-resistant, anodic oxide finish.



OPEN ROLL



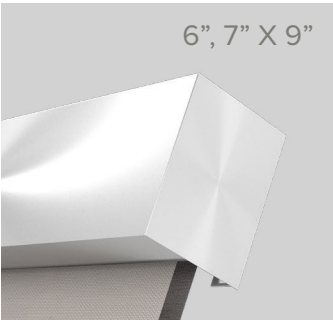
FASCIA BOTTOM



POCKET SINGLE



FASCIA TOP



POCKET DUAL

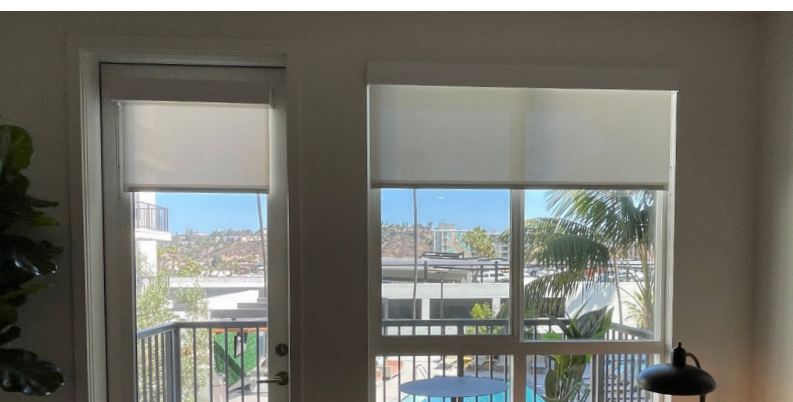


DUAL

ARCHITECTURAL SERIES | MADE FOR LARGE SHADES

© Copyright 2021 Roll-A-Shade Inc., All rights reserved.





CONTRACT PLUS⁺

CABLE GUIDE

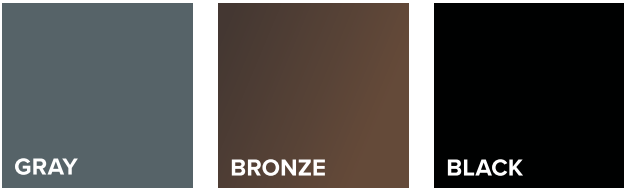
MANUAL & MOTORIZED

EXTERIOR SYSTEMS

The Cable Guide System is a cost effective solution to provide comfort on outdoor patios and living spaces. This robust system will block up to 95% of harmful UV rays, reduce heat and minimize glare. The Cable Guide System is ideal for residential and commercial projects alike. Custom branding is available and the additional advertising can be key to your success. The printed shade allows you to increase brand awareness while keeping your customers comfortable and happy.

The Cable Guide System allows you to seat more occupants in outdoor seating areas, thus increasing revenue. This heavy-duty system is made to withstand moisture and temperature fluctuation while keeping your customers comfortable.

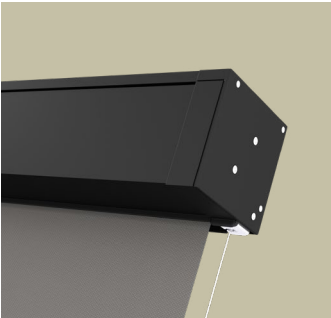
MOTORIZATION/AUTOMATION INTEGRATION POSSIBLE



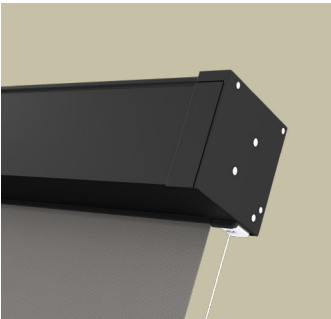
COLOR OPTIONS

POWDER COATED

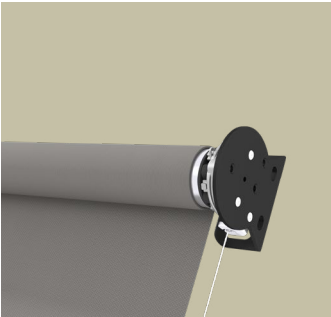
Providing a protective layer with polyester or epoxy powder. Get the satisfaction of your system looking new and protected.



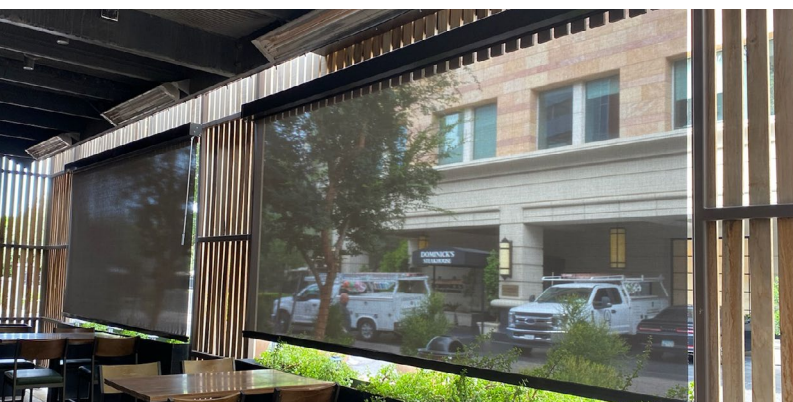
CASSETTE



FASCIA



OPEN ROLL



ZIPSHADE

MOTORIZED

EXTERIOR SYSTEMS

The ZipShade® is equipped with one of the most advanced zipper tracks in the industry resulting in superior wind ratings. When in closed position, the ZipShade® is insectproof and is operational in winds up to 80mph. Utilizing the ZipShade® in projects has many benefits including lower utility bills when the shade is installed on the exterior of the building. Increase your revenue with Zipshades installed on the patio allowing for additional seating in a more comfortable atmosphere throughout the year.

Patented ZipShade® technology guarantees a fixed fabric with no wrinkles. The superior ZipShade® side channel technology results in extreme wind resistance up to 80mph, when installed against a building.

MOTORIZATION/AUTOMATION INTEGRATION POSSIBLE

BRONZE

BLACK

WHITE

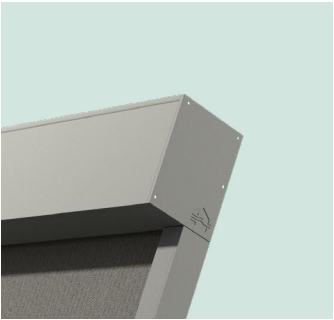
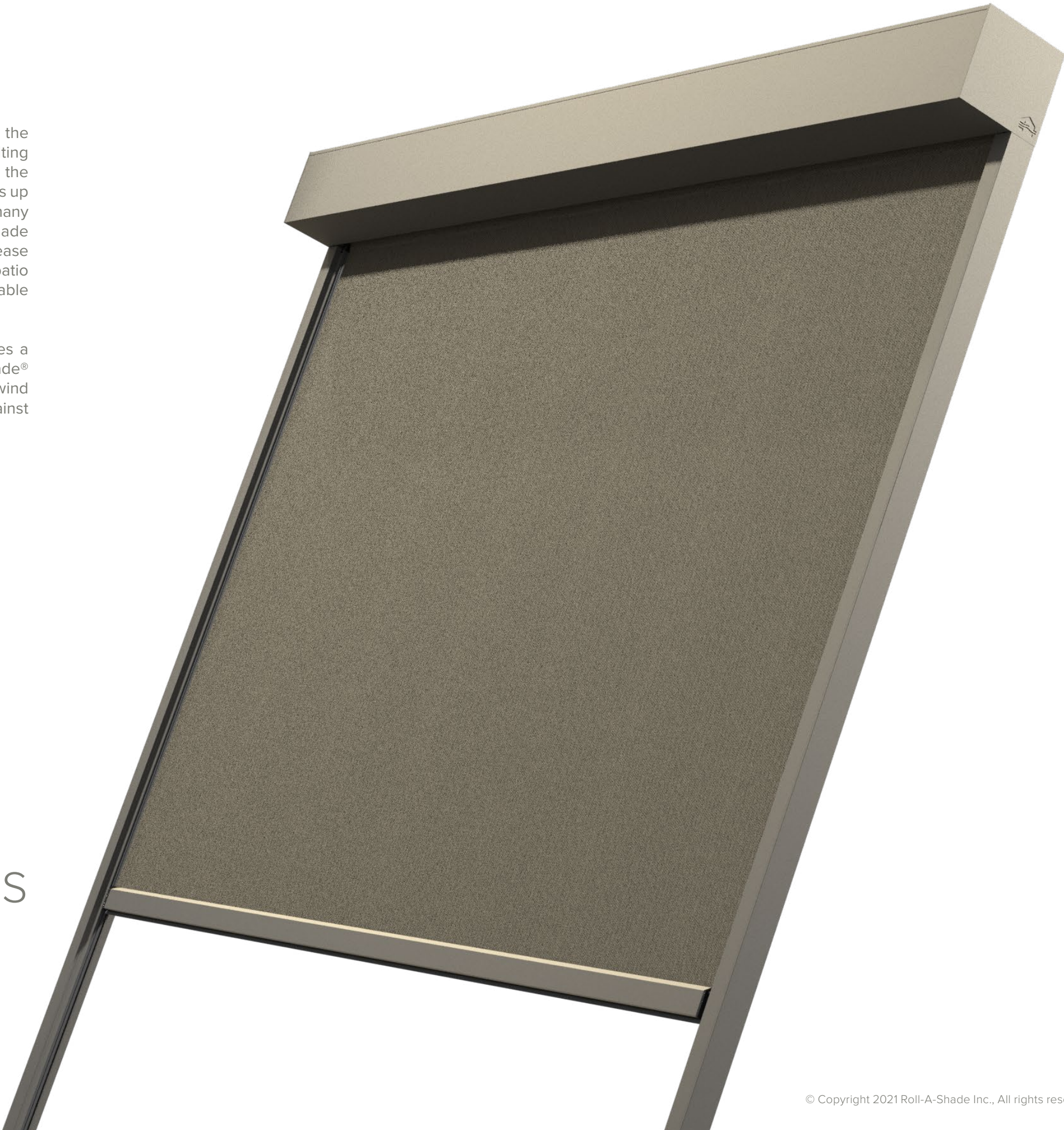
SILVER METALLIC

CUSTOM

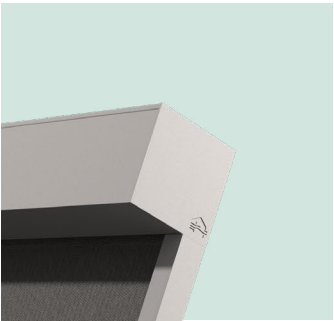
COLOR OPTIONS

POWDER COATED

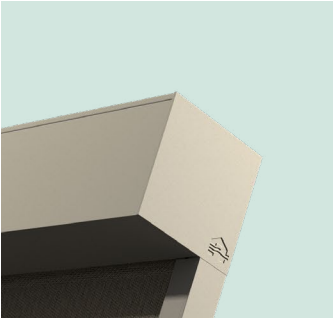
Providing a protective layer with polyester or epoxy powder. Get the satisfaction of your system looking new and protected.



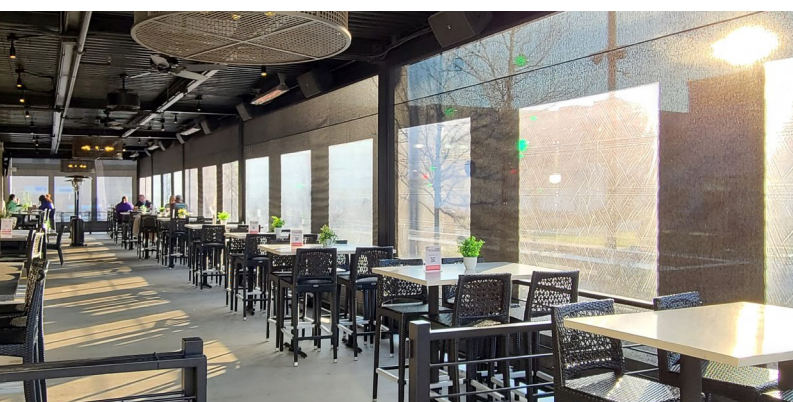
100 SLIM



100



150



ZIP SHADE

CHOOSING THE RIGHT FABRIC

When choosing the fabric for your space, it's important to identify your main sun issues. The two most common issues are glare and heat gain and often times it's important to consider preserving the view through as well. Identifying these concerns will help narrow your fabric choices so your roller shade fabric provides optimum relief to make your space more comfortable.

DARK FABRICS

A darker colored fabric is ideal when glare control and view through are a necessity. Dark colored fabrics transmit less light which in return has a lower surface brightness and reflectivity. When preserving outdoor views is important, dark fabrics are the most ideal option.

DUPLEX FABRICS

Duplex fabrics are an ideal solution when both heat gain and glare are issues. The light color faces outside to reflect sunlight and reduce heat gain. The darker color faces the interior and preserves view-through while also reducing glare. Utilizing the benefits of both light and dark colors, this fabric is the perfect solution for sun control.

LIGHT FABRICS

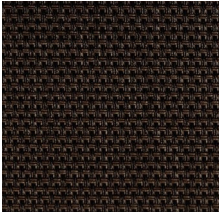
A lighter colored fabric will reflect sunlight and in turn will absorb less heat, lowering the heat gain in the space. Light colored fabrics are ideal for facades that experience intense UV rays and harsh sunlight.



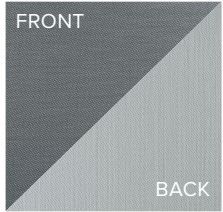
***CONTACT OUR SALES EXPERTS FOR MORE FABRIC INFORMATION**



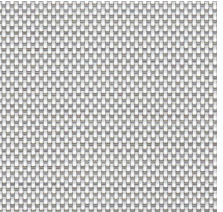
Serge Ferrari 4%
Soltis 92-2053



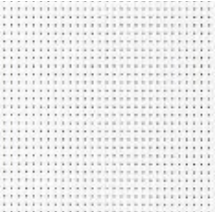
Mermet 3%
Charcoal/Bronze



Phifer 3%
Oyster/Pewter



Phifer 10%
Granite



Sig. Series 5%
White/White

BRANDING

Printed logo shades are ideal when your location has strict exterior signage codes. Printing is visible from the storefront, putting your company logo or products directly in front of your customers.

Custom graphics are a way to showcase directionals of drive-thru windows, branded products, discount announcements, and so much more. Printed shades allow you to convey your information in an aesthetically pleasing and functional way.

PRINTED SHADES

Roll-A-Shade® offers custom printing on manual, stationary, and motorized roller shades. The state-of-the-art printing equipment has the ability to print vibrant, vivid artwork including company logos and full-bleed marketing images. Our durable, odorless water-based latex inks are GREENGUARD Gold certified and able to withstand years of wear. We can print on a wide variety of solar screen fabrics.



THREE - SIXTY EXPERIENCE

Roll-A-Shade® products come with a three-sixty service guarantee. We are with you from the first measurement through the lifetime of your shade system.



MEASURE & MANUFACTURE

We conduct a field measure and manufacture the shades.



INSTALL

We install the shades.



SERVICE

Plus, we service all of your shades, when necessary.



DESIGN

Work with our Architectural Department for custom applications.

HEADQUARTERS & WEST COAST MANUFACTURING

12101 Madera Way
Riverside, CA 92503
rollashade.com
TF 888.245.5077
P 951.245.5077

CANADIAN SALES & ENGINEERING

7240 Woodbine Ave. Suite 215
Markham, ON L3R 1A4
rollashade.ca

EAST COAST MANUFACTURING

3117 NW 25th Ave.
Pompano Beach, FL 33069