

3000 NET

SOLAR SCREEN



TEXTSTYLE



3000 NET

3000 NET Solar Screen fabrics offer a stylish and modern aesthetic for window treatments that minimize the negative effects of the sun, while preserving outward visibility. 3000 NET is the most widely used screen due to its 2x2 lightweight basket weave which offers ease of fabrication and versatility.

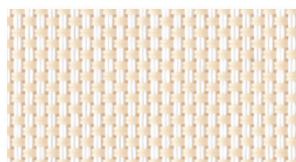
FEATURES

- A unique manufacturing process delivers technically superior fabrics that are backed by a limited lifetime warranty
- Phthalate free promoting clean and safe indoor air quality
- Flame Retardant
- Available in five openness factors - Privacy, 1%, 3%, 5%, 10%
- Superior Noise Reduction Coefficient (NRC) of .55 for 1% openness
- Versatile – can be used in roller shades and panel track applications

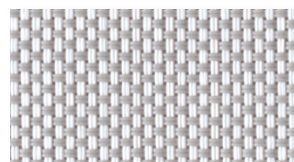
COLORS



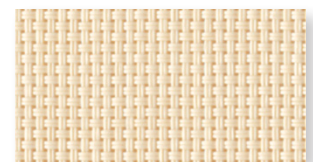
N001 WHITE/WHITE



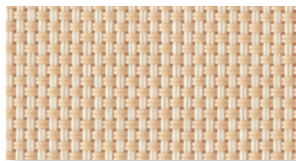
N002 WHITE/BEIGE



N003 WHITE/GRAY



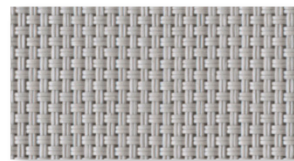
N201 BEIGE/BEIGE



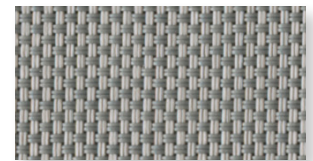
N202 BEIGE/SABLE



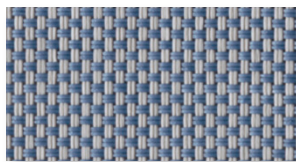
N203 BEIGE/GRAY



N301 GRAY/GRAY



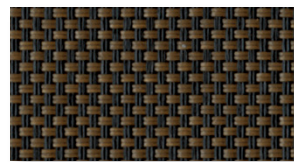
N302 GRAY/DARK GRAY



N304 GRAY/BLUE



N901 CHARCOAL/CHARCOAL



N903 CHARCOAL/BRONZE



N903 CHARCOAL/GRAY

Bringing Fabrics to Life

USA | AUSTRALIA | EUROPE textstyle.com

A DIVISION OF
**ROLLEASE
ACMEDA**

©2020 Textstyle

3000 NET

SOLAR SCREEN



TEXTSTYLE

COLOR RANGE

| | Privacy | | | 1% | | | 3% | | | 5% | | | 10% | | |
|------------------------|---------|-----|------|-----|-----|------|-----|-----|------|-----|-----|------|-----|-----|------|
| | 78" | 98" | 118" | 78" | 98" | 118" | 78" | 98" | 118" | 78" | 98" | 118" | 78" | 98" | 118" |
| N001 White/White | x | x | x | x | x | x | x | x | x | x | x | x | | x | x |
| N002 White/Beige | x | x | x | x | x | x | x | x | x | x | x | x | | x | x |
| N003 White/Gray | x | x | x | x | x | x | x | x | x | x | x | x | | x | x |
| N201 Beige/Beige | | | | | | x | | x | x | x | x | x | | | |
| N202 Beige/Sable | | | | | | | | | | | x | | | | |
| N203 Beige/Gray | | | | x | x | x | x | x | x | x | x | x | | | |
| N301 Gray/Gray | | | | | x | x | x | x | x | x | x | x | | | |
| N302 Gray/Dark Gray | | | | | | | | | | | | x | | | |
| N304 Gray/Blue | | | | | | | | | | | x | | | | |
| N901 Charcoal/Charcoal | x | x | x | x | x | x | x | x | x | x | x | x | | x | x |
| N902 Charcoal/Bronze | | x | x | | x | x | x | x | x | x | x | x | | | |
| N903 Charcoal/Gray | | x | x | | x | x | x | x | x | x | x | x | | | |

SPECIFICATIONS

| | Privacy | 1% | 3% | 5% | 10% |
|-------------------------|------------------------------------------------------------------------------------------------------------------------------------------------|--------------------------------------------------|--------------------------------------------------|--------------------------------------------------|--------------------------------------------------|
| Series | 3000 NET Privacy | 3000 NET 1% | 3000 NET 3% | 3000 NET 5% | 3000 NET 10% |
| Composition | 25% Polyester, 75% PVC | | | | |
| Openness Factor | Average < 1% | Average 1% | Average 3% | Average 5% | Average 10% |
| Weight | 15.37 oz/yd ² (521 g/m ²) | 15.28 oz/yd ² (518 g/m ²) | 13.12 oz/yd ² (445 g/m ²) | 12.39 oz/yd ² (420 g/m ²) | 11.36 oz/yd ² (385 g/m ²) |
| Thickness | 0.026 in (0.66mm) | 0.027 in (0.68mm) | 0.022 in (0.57mm) | 0.022 in (0.55mm) | 0.020 in (0.52mm) |
| Light fastness | Grade 8 (Blue Wool Scale) | | | | |
| Average length | 33 yd/roll (30m) | | | | |
| Width | 78.7" (2m), 98.4" (2.5m), 118" (3m) | | | | |
| Cutting | Cold Cutting and Ultrasonic Cutting | | | | |
| Welding | 248°F (120°C) to 284°F (140°C), test first | | | | |
| Railroadable | Yes, but should be done for all shades in the room to avoid visual variation | | | | |
| Cleaning | Wipe clean with warm soapy water and damp cloth | | | | |
| Fire Classifications | NFPA 701, CA Title 19 | | | | |
| Environmental Standards | Greenguard Gold, Low VOC <0.5mg/m ³ : CDPH Standard Method v1.1-2010, Health Product Declaration, Oeko-Tex Certified 100, ISO 14001 | | | | |

Bringing Fabrics to Life

USA | AUSTRALIA | EUROPE textstyle.com

A DIVISION OF
**ROLLEASE
ACMEDA**

©2020 Textstyle

3000 NET

SOLAR SCREEN



TEXTSTYLE

THERMAL AND OPTICAL FACTORS

| CODE | | THERMAL FACTORS | | | | | | OPTICAL FACTORS |
|------------------------|------------------------|------------------|----|----|---------------------|---------|---------|-----------------|
| | | Ts | Rs | As | Shading Coefficient | | | Tv |
| | | | | | 1/8" CL | 1/4" CL | 1/4" HA | |
| Privacy | N001 White/White | 17 | 65 | 18 | 0.32 | 0.31 | 0.31 | 10 |
| | N002 White/Beige | 16 | 55 | 29 | 0.40 | 0.39 | 0.34 | 9 |
| | N003 White/Gray | 10 | 43 | 47 | 0.46 | 0.45 | 0.37 | 6 |
| | N203 Beige/Gray | 8 | 39 | 53 | 0.49 | 0.47 | 0.38 | 5 |
| | N301 Gray/Gray | 7 | 31 | 62 | 0.54 | 0.52 | 0.43 | 4 |
| | N901 Charcoal/Charcoal | 2 | 4 | 94 | 0.71 | 0.67 | 0.49 | 3 |
| | N902 Charcoal/Bronze | 2 | 5 | 93 | 0.70 | 0.65 | 0.50 | 3 |
| | N903 Charcoal/Gray | 3 | 15 | 82 | 0.64 | 0.61 | 0.45 | 2 |
| | 1% | N001 White/White | 15 | 67 | 18 | 0.32 | 0.33 | 0.31 |
| N002 White/Beige | | 13 | 62 | 25 | 0.35 | 0.35 | 0.33 | 9 |
| N003 White/Gray | | 7 | 51 | 42 | 0.42 | 0.41 | 0.36 | 4 |
| N201 Beige/Beige | | 8 | 48 | 44 | 0.32 | 0.31 | 0.22 | 7 |
| N203 Beige/Gray | | 10 | 39 | 51 | 0.55 | 0.53 | 0.48 | 3 |
| N301 Gray/Gray | | 1 | 33 | 66 | 0.54 | 0.55 | 0.47 | 2 |
| N901 Charcoal/Charcoal | | 0 | 4 | 96 | 0.72 | 0.69 | 0.50 | 11 |
| N902 Charcoal/Bronze | | 0 | 6 | 94 | 0.71 | 0.67 | 0.50 | 3 |
| N903 Charcoal/Gray | | 3 | 13 | 84 | 0.62 | 0.59 | 0.50 | 2 |
| 3% | N001 White/White | 17 | 65 | 18 | 0.32 | 0.31 | 0.31 | 10 |
| | N002 White/Beige | 16 | 55 | 29 | 0.40 | 0.39 | 0.34 | 9 |
| | N003 White/Gray | 10 | 43 | 47 | 0.46 | 0.45 | 0.37 | 6 |
| | N201 Beige/Beige | 12 | 52 | 36 | 0.42 | 0.41 | 0.35 | 8 |
| | N203 Beige/Gray | 8 | 39 | 53 | 0.49 | 0.47 | 0.38 | 5 |
| | N301 Gray/Gray | 7 | 31 | 62 | 0.54 | 0.52 | 0.43 | 4 |
| | N901 Charcoal/Charcoal | 2 | 4 | 94 | 0.71 | 0.67 | 0.49 | 3 |
| | N902 Charcoal/Bronze | 2 | 5 | 93 | 0.70 | 0.65 | 0.50 | 3 |
| | N903 Charcoal/Gray | 3 | 15 | 82 | 0.64 | 0.61 | 0.45 | 2 |
| 5% | N001 White/White | 20 | 66 | 14 | 0.34 | 0.34 | 0.32 | 12 |
| | N002 White/Beige | 19 | 56 | 25 | 0.41 | 0.41 | 0.36 | 13 |
| | N003 White/Gray | 12 | 44 | 44 | 0.48 | 0.47 | 0.39 | 9 |
| | N201 Beige/Beige | 16 | 51 | 33 | 0.44 | 0.43 | 0.37 | 11 |
| | N202 Beige/Sable | 13 | 46 | 41 | 0.48 | 0.46 | 0.39 | 10 |
| | N203 Beige/Gray | 11 | 40 | 49 | 0.51 | 0.49 | 0.40 | 8 |
| | N301 Gray/Gray | 9 | 32 | 59 | 0.56 | 0.54 | 0.42 | 7 |
| | N302 Gray/Dark Gray | 8 | 24 | 68 | 0.61 | 0.58 | 0.45 | 7 |
| | N304 Gray/Blue | 10 | 24 | 66 | 0.61 | 0.59 | 0.45 | 8 |
| | N901 Charcoal/Charcoal | 5 | 5 | 90 | 0.73 | 0.69 | 0.51 | 6 |
| | N902 Charcoal/Bronze | 5 | 6 | 89 | 0.72 | 0.69 | 0.50 | 6 |
| | N903 Charcoal/Gray | 6 | 16 | 78 | 0.66 | 0.63 | 0.47 | 6 |
| | 10% | N001 White/White | 28 | 57 | 15 | 0.39 | 0.38 | 0.35 |
| N002 White/Beige | | 24 | 54 | 22 | 0.45 | 0.44 | 0.39 | 20 |
| N003 White/Gray | | 18 | 42 | 40 | 0.51 | 0.49 | 0.42 | 16 |
| N901 Charcoal/Charcoal | | 11 | 3 | 86 | 0.76 | 0.72 | 0.54 | 13 |

Bringing Fabrics to Life

USA | AUSTRALIA | EUROPE textstyle.com

A DIVISION OF
**ROLLEASE
ACMEDA**

©2020 Textstyle

3000 NET

SOLAR SCREEN



TEXSTYLE

ACOUSTICAL PERFORMANCE

| 3000 NET | NRC RATING* | SAA RATING* |
|----------|-------------|-------------|
| 1% | 0.55 | 0.55 |
| 3% | 0.15 | 0.16 |
| 5% | 0.10 | 0.10 |

*Noise Reduction Coefficient (NRC) and Sound Absorption Average (SAA) tested to ASTM C423-17



LOW VOC



HEALTH PRODUCT DECLARATION

OEKO-TEX®
CONFIDENCE IN TEXTILES
STANDARD 100
Tested for harmful substances.
www.oeko-tex.com/standard100



14001



9001



LIMITED LIFETIME WARRANTY



FR



LEAD FREE



FORMALDEHYDE FREE



PHTHALATE FREE



FRAGRANCE FREE



ANTI-BACTERIAL



ENERGY SAVING



PRINTABLE

Bringing Fabrics to Life

USA | AUSTRALIA | EUROPE texstyle.com



A DIVISION OF
**ROLLEASE
ACMEDA**

©2020 Texstyle