

Outstanding thermal
performance and appearance

.....
new Colours
Collection
.....

SOLTIS

Perform 92

Main applications

Facade blinds, veranda and glass roof blinds,
drop-arm awnings and shade sails



■ Keeps out up to **97%** of the heat

Soltis Perform 92 acts like a heat shield. Its micro-vents filter the heat, reducing a building's energy costs.

■ Glare control

is combined with excellent transparency for better user comfort. Soltis Perform 92's thermal and optical performance earns building certification program points (LEED, BREEAM, Minergie, HQE, etc.).

■ High colour resistance over time

Colour is preserved even after several years of exposure (according to the ISO 105 A02 scale).

4x

MORE RESISTANCE

than a standard
product

The Soltis Perform 92 fabric's resistance delivers longer durability to provide you with better performance over a longer period of time.

2x

THINNER

than a standard
product

Reduced thickness for enhanced facade appearance and reduced bulk, even with extended blind heights.

Soltis Perform 92 - 3 key properties



**Dimensional
stability**

thanks to Précontraint®
technology



**Easy
to clean**

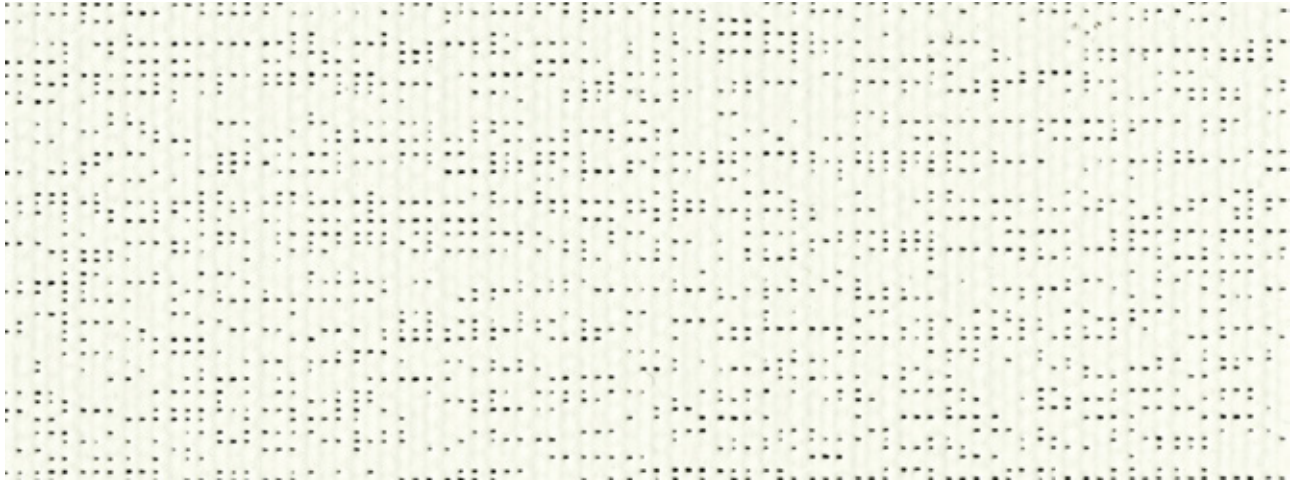


**UV
resistant**



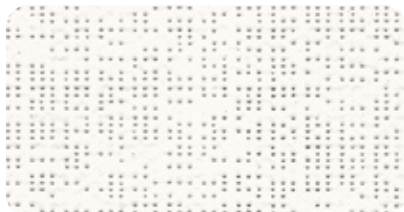
SOLTIS

Perform 92



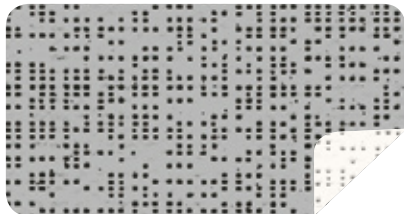
new Snow white 177 cm — 267 cm

92-50690



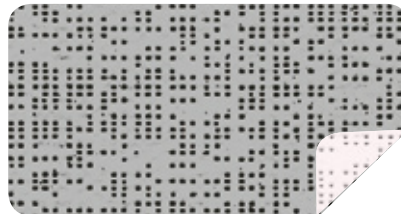
White 177 cm — 267 cm

92-2044



Alu/White 177 cm — 267 cm

92-2051



Alu/Oat 177 cm — 267 cm

92-2046



Alu/Alu 177 cm — 267 cm

92-2048



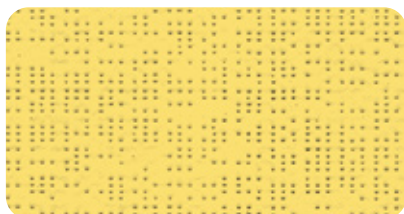
Alu/ Medium grey 177 cm — 267 cm

92-2074



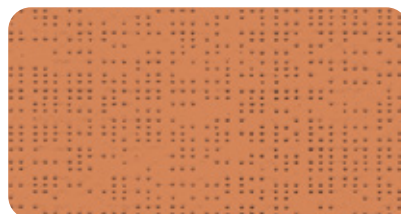
Alu/Anthracite 177 cm

92-2068



Gold 177 cm

92-50273



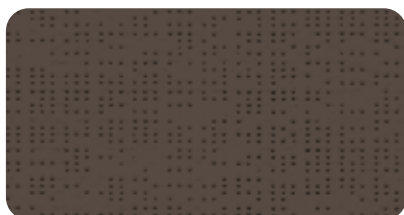
Copper 177 cm

92-50274



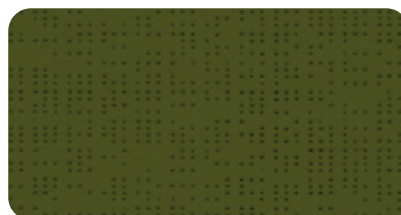
Beaten metal 177 cm — 267 cm

92-2045



Bronze 177 cm — 267 cm

92-2043



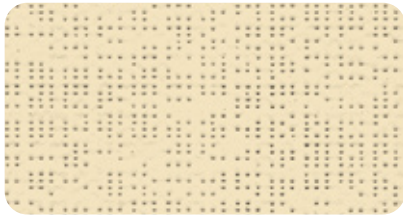
Beetle 177 cm

92-2149

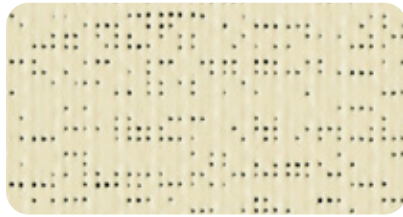


new **Deep black** 177 cm — 267 cm

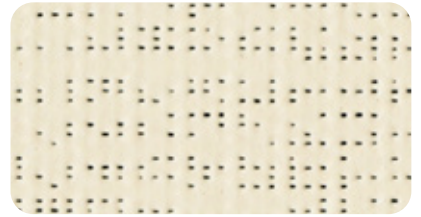
92-51176



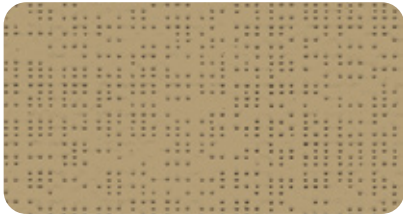
Champagne 177 cm — 267 cm 92-2175



new Quartz 177 cm — 267 cm 92-50303



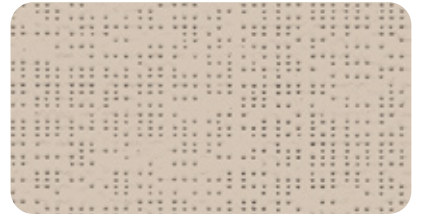
new Shea 177 cm — 267 cm 92-50843



Pepper 177 cm — 267 cm 92-2012



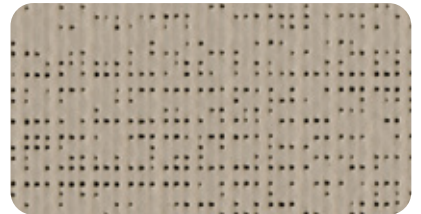
Hemp 177 cm — 267 cm 92-50265



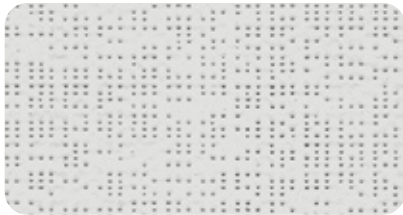
Sandy beige 177 cm — 267 cm 92-2135



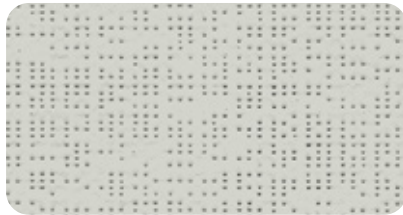
Havana-Brown 177 cm 92-50266



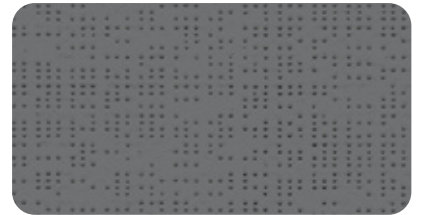
new Taupe 177 cm — 267 cm 92-50850



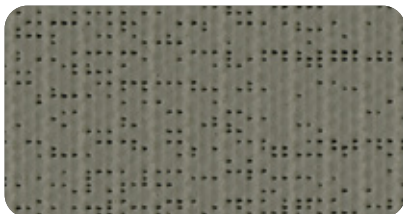
Cloud 177 cm — 267 cm 92-50272



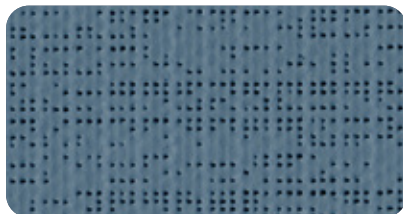
Boulder 177 cm — 267 cm 92-2171



Concrete 177 cm — 267 cm 92-2167



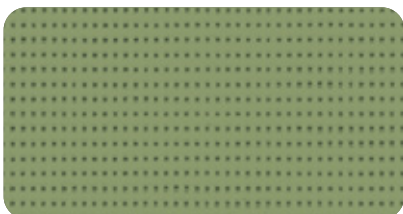
new Dark grey 177 cm — 267 cm 92-51177



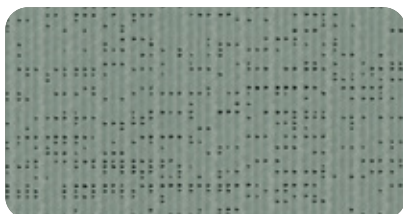
new Celestial grey 177 cm 92-51178



Anthracite 177 cm — 267 cm 92-2047



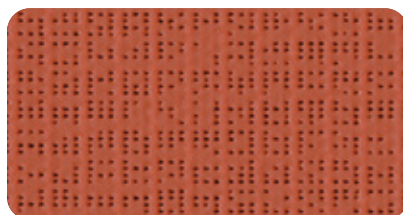
Moss green 177 cm 92-2158



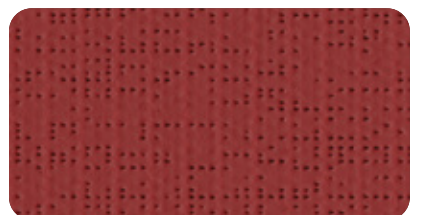
new Green-grey 177 cm 92-51179



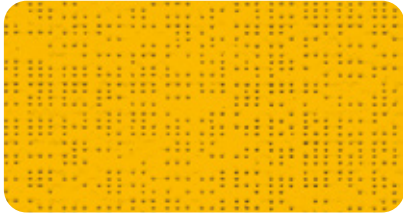
new Tennis green 177 cm 92-8056



new Brick 177 cm 92-51180



new Deep red 177 cm 92-51181



Buttercup 177 cm

92-2166



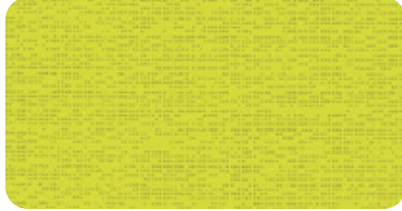
Lagoon 177 cm

92-2160



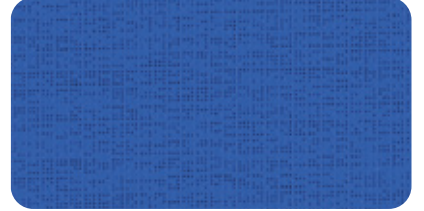
Orange 177 cm

92-8204



Aniseed 177 cm

92-2157



new Deep blue 177 cm

92-51182



Red 177 cm

92-8255

new Colours Collection

TERRACE

INTERIOR
BLINDS

EXTERIOR
BLINDS

A range of colours
to match all of your
projects

The new Soltis Perform 92 range features colours designed by our design office to complement the building's entire environment (joinery, openings and facades). The colours present tones that match the most common colours (RAL and NCS references).

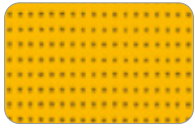


Download

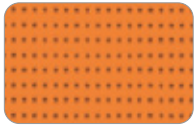
our RAL and NCS
colour correspondence.



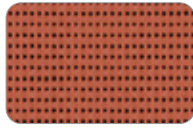
■ Colours coordinated with Soltis Horizon 86



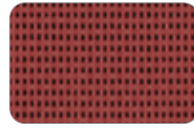
86-2166



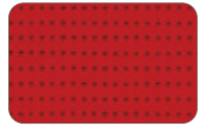
86-8204



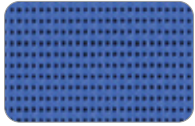
86-51180



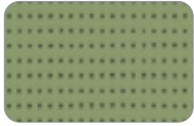
86-51181



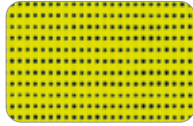
86-8255



86-51182



86-2158



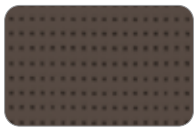
86-2157



86-2135



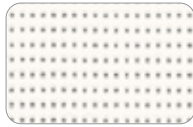
86-2012



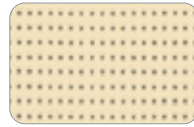
86-2043



86-50690



86-2044



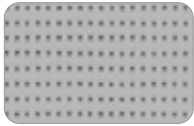
86-2175



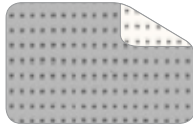
86-2171



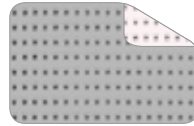
86-2167



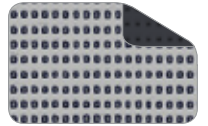
86-2048



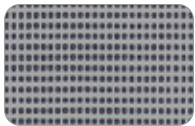
86-2051



86-2046



86-2068



86-2045



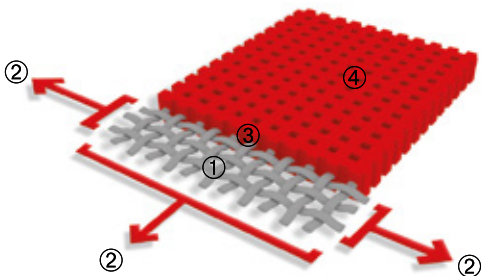
86-2047



86-51176

■ Exclusive Précontraint® technology

This unique worldwide patented technology consists of maintaining the composite in bi-axial tension throughout the entire manufacturing cycle. It gives our materials outstanding performance, allowing them to surpass market standards in terms of dimensional stability, mechanical strength, coating thickness and flatness.



High tenacity polyester micro-cable reinforcement	①	Superior resistance to elongation and tearing
Coating under bi-axial tension, exerted in warp and weft	②	No deformation during implementation and use
Superior coating at the crest of the wires and anti-fouling surface treatment	③	Superior aesthetic and mechanical durability
Extreme flatness and low thickness	④	Smooth, easy to clean surface with small footprint and easy winding

■ Solar and light properties (according to EN 14501)

	Width (in cm)	TS	RS	AS	TV n-h	ISO 52022-3* Glazing D	
						g _{tot} ^e	g _{tot} ⁱ
92-2012	177 267	7	30	63	6	0.04	0.24
92-2043	177 267	4	13	83	4	0.04	0.28
92-2044	177 267	19	68	13	17	0.07	0.11
92-2045	177 267	4	35	61	4	0.03	0.22
92-2046 A	177 267	12	46	42	10	0.05	0.18
92-2046 B	177 267	12	63	25	10	0.05	0.14
92-2047	177 267	5	8	87	5	0.04	0.28
92-2048	177 267	8	46	46	8	0.04	0.18
92-2051 A	177 267	12	49	39	11	0.06	0.17
92-2051 B	177 267	12	70	18	11	0.05	0.10
92-2068 A	177 267	4	34	62	4	0.03	0.22
92-2068 B	177 267	4	8	88	4	0.04	0.28
92-2074 A	177 267	4	37	59	4	0.03	0.21
92-2074 B	177 267	4	25	71	4	0.03	0.24
92-2135	177 267	11	46	43	8	0.04	0.19
92-2149	177 267	5	16	79	4	0.04	0.27
92-2157	177 267	15	51	34	10	0.05	0.20
92-2158	177 267	7	28	65	5	0.03	0.24
92-2160	177 267	11	36	53	5	0.04	0.24
92-2166	177 267	21	54	25	17	0.07	0.19
92-2167	177 267	6	19	75	5	0.04	0.26

	Width (in cm)	TS	RS	AS	TV n-h	ISO 52022-3* Glazing D	
						g _{tot} ^e	g _{tot} ⁱ
92-2171	177 267	8	41	51	6	0.04	0.20
92-2175	177 267	19	65	16	17	0.07	0.14
new 92-8056	177 267	2	10	88	2	0.03	0.28
92-8204	177 267	21	45	34	11	0.06	0.23
92-8255	177 267	12	28	60	4	0.05	0.27
92-50265	177 267	9	49	42	6	0.04	0.18
92-50266	177 267	4	19	77	4	0.03	0.26
92-50272	177 267	12	55	33	9	0.05	0.16
92-50273	177 267	8	42	50	5	0.04	0.21
92-50274	177 267	8	35	57	4	0.04	0.24
new 92-50303	177 267	15	63	22	10	0.05	0.15
new 92-50843	177 267	13	62	25	10	0.05	0.14
new 92-50850	177 267	5	31	64	3	0.03	0.23
new 92-50690	177 267	17	73	10	15	0.06	0.10
new 92-51176	177 267	3	5	92	3	0.03	0.29
new 92-51177	177 267	3	18	79	3	0.03	0.26
new 92-51178	177 267	5	20	75	4	0.03	0.26
new 92-51179	177 267	6	29	65	4	0.03	0.24
new 92-51180	177 267	6	27	67	3	0.03	0.26
new 92-51181	177 267	4	17	79	3	0.03	0.28
new 92-51182	177 267	8	26	66	4	0.03	0.27

TS: Solar Transmission in %

RS: Solar Reflection in %

AS: Solar absorption in %

TS + RS + AS = 100% of the incident energy

TV n-h: Normal Visible light transmission - hemispherical in %

A: Aluminium surface exposed to the sun

B: Coloured surface exposed to the sun

g_{tot}^e: External Solar Factor

g_{tot}ⁱ: Indoor Solar Factor

* Detailed method
ISO 52022-3

Takes into account the spectral values of glazing transmission and reflection + blind complex for calculating the solar factor g_{tot}.
Type "D" glazing: insulating double glazing with low emissivity on surface 2 (4 + 16 + 4; Argon filling) g = 0.32 - U = 1.1



SOLTIS

Perform 92

	■ Technical properties	Standards
Openness factor	4%	
Weight	420 g/m ² • 12.3 oz/sq.yd	EN ISO 2286-2
Thickness	0.45 mm • 450 microns	
Width	177 cm - 267 cm • 69.6 in - 105.1 in	
■ Roll length		
Standard piece size: 177 cm • 69.6 in	50 lm • 54.6 yd	
Standard piece size: 267 cm • 105.1 in	40 lm • 43.7 yd	
■ Physical properties		
Tensile resistance (warp/weft)	310/210 daN/5 cm	EN ISO 1421
Tear resistance (warp/weft)	45/20 daN	DIN 53.363
■ Reaction to fire		
Rating	M1/NFP 92-507 — B1/DIN 4102-1 — BS 7837 — BS 5867 — CSFMT19 — Class A/ASTM E84 Schwerbrennbar-Q1-Tr1/ONORM A 3800-1 — Class 1/EN 13773 — M1/UNE 23.727-90 VKF 5.3/SN 198898 — 1530.3/ AS/NZS — G1/GOST 30244-94 — Method 1&2/NFPA 701 Class 1/UNI 9177-87	
Euroclass	B-s2,d0	EN 13501-1
■ Management system		
Quality		ISO 9001
Environment		ISO 14001
Energy		ISO 50001

■ Certifications, labels, warranty



■ Tools and services

ACV and FDES available on request
 Tool for evaluating the energy savings that can be achieved with Soltis solar protection: SOLTISSIM. Contact your Serge Ferrari representative.

¹ "+=0" logo: summarises the Serge Ferrari Group's commitment to CSR, to align economic performance and positive impact. Find out about our concrete actions in our CSR report.

The technical characteristics listed are average values with a tolerance of +/- 5%.

Purchasers of our products are responsible for their application or transformation with regard to any third party rights. Purchasers of our products are also responsible for their implementation and installation in compliance with the destination country's best practices and safety rules. Contractual guarantees are included in the terms of the guarantee.

The values mentioned in this document are based on test results in compliance with study practice. These are provided as indications so that customers can obtain optimal performance from using our products. These are subject to technical improvements and we reserve the right to change specifications at any time. Purchasers of our products are responsible for asserting that the data presented above is in compliance with the validity of the above data.