



PERFORMANCE +  
Metallized Fabric

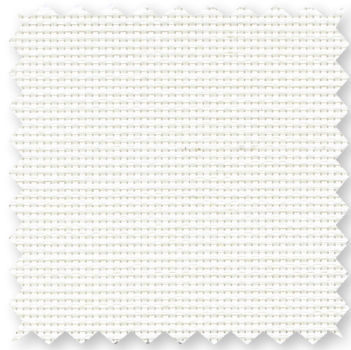
STYLE  
2500+ / 2410+ / 2390+

---

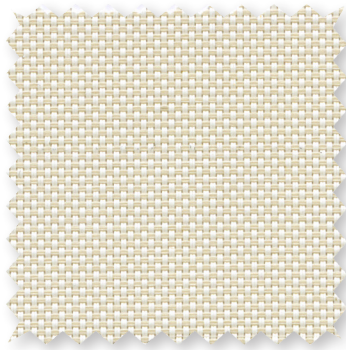
WEAVING  
EXCELLENCE  
WITH  
INNOVATION



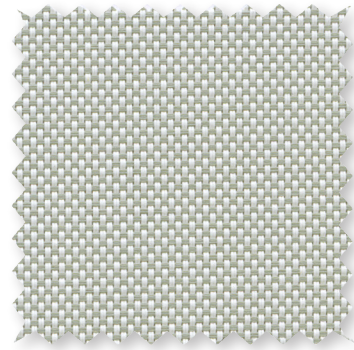
P12 Oyster



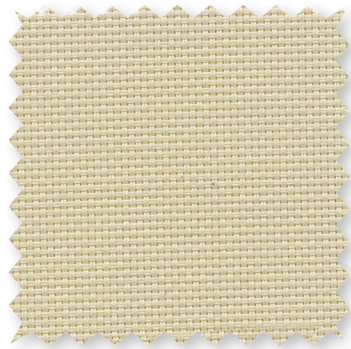
P13 Oyster/Beige



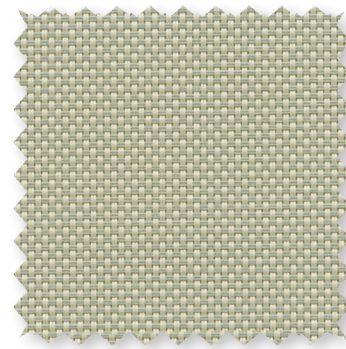
P14 Oyster/Pearl Gray



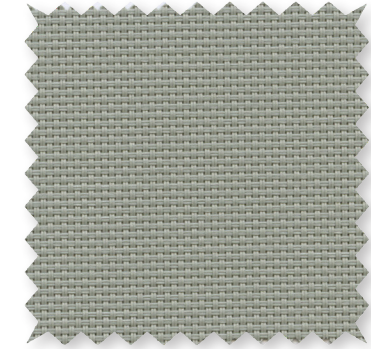
Q20 Beige



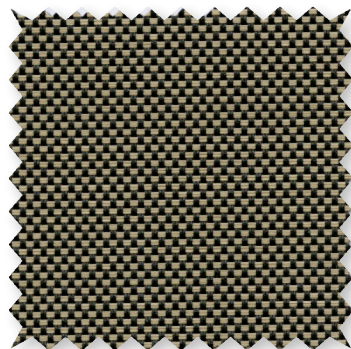
Q21 Beige/Pearl Gray



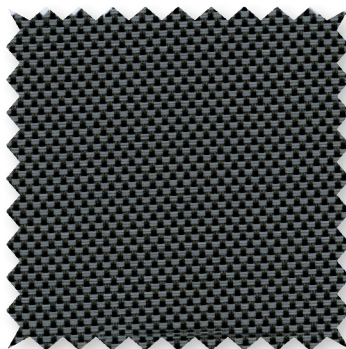
V20 Pearl Gray



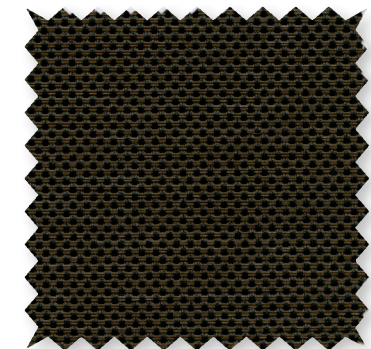
V32 Charcoal/Alpaca



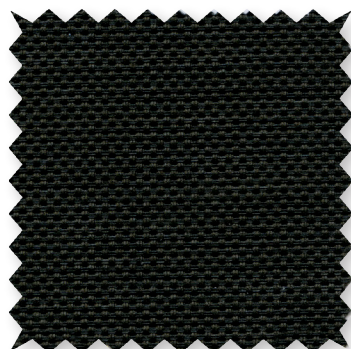
V22 Charcoal/Gray



V24 Charcoal/Chestnut



V21 Charcoal



**Benefits of Performance+ include:**

- Significant reduction of Solar Heat Gain in all colors
- Improved glare reduction in light colors
- Improved thermal performance
- Improved outward visibility in light colors

\*Colors may vary based on individual computer settings and should only be used for general reference.



SOLAR HEAT CONTROL PROPERTIES SHEERWEAVE STYLE 2500 PERFORMANCE+															
	Solar Trans	Solar Ref Out	Light Trans	Light Ref	% Open	UV Trans	Color Rend Index	High Performance Glass				6mm Single Bronze Glass			
								Light Trans	g-Value/ SHGC	SC	U-value in W/m2K	Light Trans	g-Value/ SHGC	SC	U-value in W/m2K
Glazing Performance	n/a	n/a	n/a	n/a	n/a	n/a	n/a	69	39	45	1.1	49	58	67	5.7
P12 Oyster	3	74	3	73	1	2	98	2	15	18	0.8	1	19	22	2.5
P13 Oyster/Beige	3	74	3	73	1	2	95	2	16	18	0.8	1	20	23	2.5
P14 Oyster/Pearl Gray	3	74	3	73	1	2	98	2	16	19	0.8	1	20	22	2.4
Q20 Beige	3	74	3	73	1	2	95	2	16	19	0.8	1	20	23	2.5
Q21 Beige/Pearl Gray	3	73	2	72	1	2	96	2	16	18	0.8	1	20	22	2.5
V20 Pearl Gray	2	75	2	74	1	2	98	2	15	18	0.8	1	19	22	2.4
V21 Charcoal	2	72	2	71	1	2	99	1	17	19	0.8	1	21	24	2.5
V22 Charcoal/Gray	2	73	2	72	1	2	100	1	16	18	0.8	1	20	21	2.5
V24 Charcoal/Chestnut	2	73	2	72	1	2	100	1	16	19	0.8	1	20	23	2.5
V32 Charcoal/Alpaca	2	75	2	74	1	2	98	2	15	18	0.8	1	19	22	2.4



SOLAR HEAT CONTROL PROPERTIES SHEERWEAVE STYLE 2410 PERFORMANCE+															
	Solar Trans	Solar Ref Out	Light Trans	Light Ref	% Open	UV Trans	Color Rend Index	High Performance Glass				6mm Single Bronze Glass			
								Light Trans	g-Value/ SHGC	SC	U-value in W/m2K	Light Trans	g-Value/ SHGC	SC	U-value in W/m2K
Glazing Performance	n/a	n/a	n/a	n/a	n/a	n/a	n/a	69	39	45	1.1	49	58	67	5.7
P12 Oyster	5	73	5	72	3	3	99	3	15	17	0.8	2	19	22	2.4
P13 Oyster/Beige	5	73	5	72	3	4	99	4	15	17	0.8	2	19	22	2.4
P14 Oyster/Pearl Gray	4	73	4	72	3	4	99	3	15	17	0.8	2	19	22	2.4
Q20 Beige	5	73	5	72	3	4	98	4	15	17	0.8	2	19	22	2.5
Q21 Beige/Pearl Gray	5	72	5	71	3	4	99	4	14	17	0.8	3	20	23	2.5
V20 Pearl Gray	4	75	4	74	3	4	99	3	14	16	0.8	2	18	21	2.4
V21 Charcoal	4	71	4	70	3	4	100	3	15	18	0.8	2	19	22	2.4
V22 Charcoal/Gray	4	72	4	71	3	4	100	3	15	17	0.8	2	19	22	2.4
V24 Charcoal/Chestnut	4	72	4	71	3	4	100	3	15	17	0.8	2	19	22	2.4
V32 Charcoal/Alpaca	4	75	4	74	3	4	99	3	15	17	0.8	2	19	22	2.5



SOLAR HEAT CONTROL PROPERTIES SHEERWEAVE STYLE 2390 PERFORMANCE+															
	Solar Trans	Solar Ref Out	Light Trans	Light Ref	% Open	UV Trans	Color Rend Index	High Performance Glass				6mm Single Bronze Glass			
								Light Trans	g-Value/ SHGC	SC	U-value in W/m2K	Light Trans	g-Value/ SHGC	SC	U-value in W/m2K
Glazing Performance	n/a	n/a	n/a	n/a	n/a	n/a	n/a	69	39	45	1.1	49	58	67	5.7
P12 Oyster	8	71	8	70	5	7	99	6	15	18	0.8	4	20	23	2.5
P13 Oyster/Beige	8	72	8	71	5	6	99	6	15	17	0.8	4	19	22	2.4
P14 Oyster/Pearl Gray	7	71	7	70	5	6	100	5	15	18	0.8	3	20	23	2.5
Q20 Beige	8	72	8	71	5	7	98	6	15	18	0.8	4	20	23	2.5
Q21 Beige/Pearl Gray	7	71	7	70	5	6	99	5	15	18	0.8	4	20	23	2.6
V20 Pearl Gray	7	74	7	73	5	6	99	5	15	17	0.8	3	19	22	2.4
V21 Charcoal	8	71	8	70	5	7	100	6	16	18	0.8	4	20	23	2.5
V22 Charcoal/Gray	8	71	8	70	5	7	100	6	16	18	0.8	4	20	23	2.4
V24 Charcoal/Chestnut	8	71	8	70	5	7	100	6	16	18	0.8	4	20	23	2.5
V32 Charcoal/Alpaca	8	74	8	73	5	7	100	6	15	17	0.8	4	20	23	2.5



MIF Seal of  
Approval

Measurements of Performance + properties by TNO The Netherlands in compliance with EN 410. Performance values are determined by specific glass type chosen for testing. For additional performance values, test references, technical definitions and handling instructions please contact the Sun Control Department at 800-221-5497 or request online at [www.phifer.com](http://www.phifer.com).

Solar Trans = Solar Transmittance  
Light Trans = Light Transmittance  
UV Trans = Ultra Violet Light Transmittance

g-Value/SHGC = Solar Heat Gain Coefficient  
U-Value in W/m2K = Watts per Meter Squared

Solar Ref Out = Solar Reflection Out  
Light Ref = Light Reflection  
Color Rend Index = Color Rendering Index

SC= Shading Coefficient



Microban® antimicrobial protection inhibits the growth of stain-causing bacteria, mold and mildew on the shade.



PRODUCT CERTIFIED FOR  
LOW CHEMICAL EMISSIONS  
[UL.COM/GG](http://UL.COM/GG)  
UL 2818

# PERFORMANCE + SPECIFICATIONS

SheerWeave Performance+ takes the performance of traditional SheerWeave Styles 2500, 2410 and 2390 fabrics “plus” the highly reflective properties of metallization and combines them to achieve the ultimate in sun control protection. By applying a thin metallized coating to the outward side of Performance+ fabrics, dark colors can achieve significant solar heat reduction comparable to what only light colors can achieve in other fabrics. The Performance+ metallized surface also improves glare reduction and outward visibility in light colors.

<b>FIRE CLASSIFICATION</b>	California U.S. Title 19 (small scale) NFPA 101 (Class A Rating) BS 5867 2008 Part 2 Type B Performance CAN/ULC-S 109-03 (large and small scale) CAN/CGSB2-4.162-M80	NFPA 701 TM#1 (small scale) IBC Section 803.1.1 (Class A Rating) NFPA 701 TM#2 (large scale) ASTM E 84 (Class 1) M1 (NF-P-92 503) B2 (DIN 4102-1)
<b>BACTERIA AND FUNGAL RESISTANCE</b>	ASTM E 2180 ASTM G21 GREENGUARD Mold and Bacteria Standard ASTM 6329 includes Microban antimicrobial additives	AATCC30 Part 3 ASTM D 3273
<b>ENVIRONMENTAL CERTIFICATION</b>	GREENGUARD GREENGUARD Gold Certified to these standards for low chemical emissions into indoor air during product usage	
<b>LEAD FREE</b>	RoHS/Directive 2002/95/EC ANSI/WCMA A 100.1-2007 for lead content US Consumer Product Safety Commission Section 101	REACH (EC 1907/2006) compliant
<b>WARRANTY</b>	5-year interior	
<b>ACOUSTICAL PERFORMANCE</b>	NRC (Noise Reduction Coefficient) and SAA (Sound Absorption Average) tested in accordance with ASTM C423-09a	
<b>UV PROTECTION</b>	Seal of Approval by the Melanoma International Foundation (MIF) for effectiveness in preventing sun damage to the skin or eyes	
<b>TRACKLESS</b>	TrackLess Technology minimizes the fiberglass yarns' inherent tendencies to track when being rolled up in a shade. With TrackLess Technology these same fabrics now track less, roll up straighter and reduce shade fabrication time.	
<b>HANDLING AND CLEANING INSTRUCTIONS</b>	The metallized coating is fragile and must be handled with the utmost care to avoid damage. Attention must be given during all phases of fabrication and installation to protect the metallized coating. Do not scrub. Do not use tape, solvents or abrasive cleaners which could damage the fabric coating. Clean with a soft, damp cloth. For additional handling recommendations, please contact the Sun Control Dept.	

STYLE	2500+	2410+	2390+
<b>WIDTHS</b>	63" and 96" 160.0 cm and 243.8 cm	63" and 96" 160.0 cm and 243.8 cm	63" and 96" 160.0 cm and 243.8 cm
<b>ROLL LENGTH</b>	30 Linear Yards 27.4 m	30 Linear Yards 27.4 m	30 Linear Yards 27.4 m
<b>COMPOSITION</b>	36% Fiberglass 62% Vinyl on Fiberglass 2% Aluminum Coating	34% Fiberglass 64% Vinyl on Fiberglass 2% Aluminum Coating	34% Fiberglass 64% Vinyl on Fiberglass 2% Aluminum Coating
<b>MESH WEIGHT</b>	16.39 oz/yd <sup>2</sup> 555.72 g/m <sup>2</sup>	14.1 oz/yd <sup>2</sup> 478 g/m <sup>2</sup>	11.8 oz/yd <sup>2</sup> 379 g/m <sup>2</sup>
<b>FABRIC THICKNESS</b>	0.024 in 0.61 mm	0.019 in 0.48 mm	0.018 in 0.46 mm
<b>OPENNESS FACTOR</b>	Approximately 1%	Approximately 3%	Approximately 5%
<b>UV BLOCKAGE</b>	Approximately 99%	Approximately 97%	Approximately 95%
<b>ACOUSTICAL VALUE</b>	NRC .50 / SAA .49	NRC .25 / SAA .23	NRC .15 / SAA .14

**PHIFER**  
INCORPORATED

P. O. Box 1700 • Tuscaloosa, Alabama 35403-1700 USA  
Phone: 205.345.2120 • FAX: 205.391.0799  
Toll Free USA/Canada: 1.800.221.5497  
www.phifer.com • ISO Registered



© SheerWeave is a registered trademark of PHIFER INCORPORATED.  
© MICROBAN is a registered trademark of Microban Products Company.  
™ UL, the UL logos and the UL mark are trademarks of UL LLC.  
Photo courtesy of DRAPER INC., Spiceland, Indiana, USA.  
© PHIFER INCORPORATED V16 3033847