



STYLE
7500 / 7500R

7500 - BLACKOUT FABRIC

7500R - RESIDENTIAL
BLACKOUT FABRIC

WEAVING
EXCELLENCE
WITH
INNOVATION



SOLAR OPTICAL PROPERTIES						SHGC/G VALUE g-tot (glass & blind)	
Code	Color	TS	RS	AS	TV	SINGLE 1/4 CL	INSULATING 1 HA
STYLE 7500 - BLACKOUT							
R13	Ice	0	68	32	0	0.24	0.20
R22	Midnight	0	68	32	0	0.24	0.20
R99	Midnight x2	4	9	87	0	0.57	0.36
S97	Orient x2	4	13	83	0	0.56	0.35
STYLE 7500R - BLACKOUT							
R44	Ice	0	68	32	0	0.24	0.20
R55	Midnight	0	68	32	0	0.24	0.20



PRODUCT CERTIFIED FOR
LOW CHEMICAL EMISSIONS
UL.COM/GG
UL 2818



STYLE 7500

TS = Solar Transmittance
RS = Solar Reflectance
AS = Solar Absorptance
TV = Visual Transmittance

SHGC = Solar Heat Gain Coefficient

1/4 CL = 1/4" Clear Glass
1 HA = 1" Heat Absorbing Glass

Fabrics Installed Internally
Zero-Degree Profile Angle

For additional performance values, test
references and technical definitions visit
us at phifer.com.

STYLE 7500

R13 Ice



R39 **NEW** Cloud



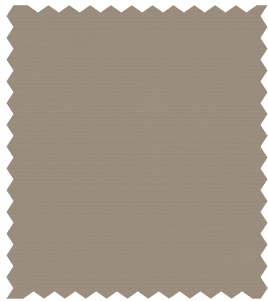
R40 **NEW** Porcelain



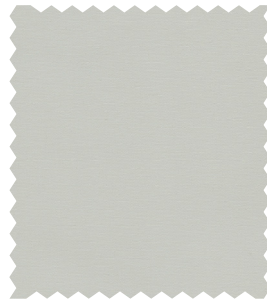
R17 Dune



R19 **NEW** Stone



R41 **NEW** Limestone



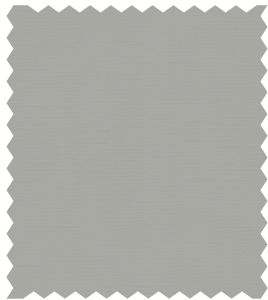
R97 Mist



R42 **NEW** Nimbus



R43 **NEW** Tundra



R20 **NEW** Odyssey



R21 Orient



S97 **NEW** Orient x2



R22 Midnight

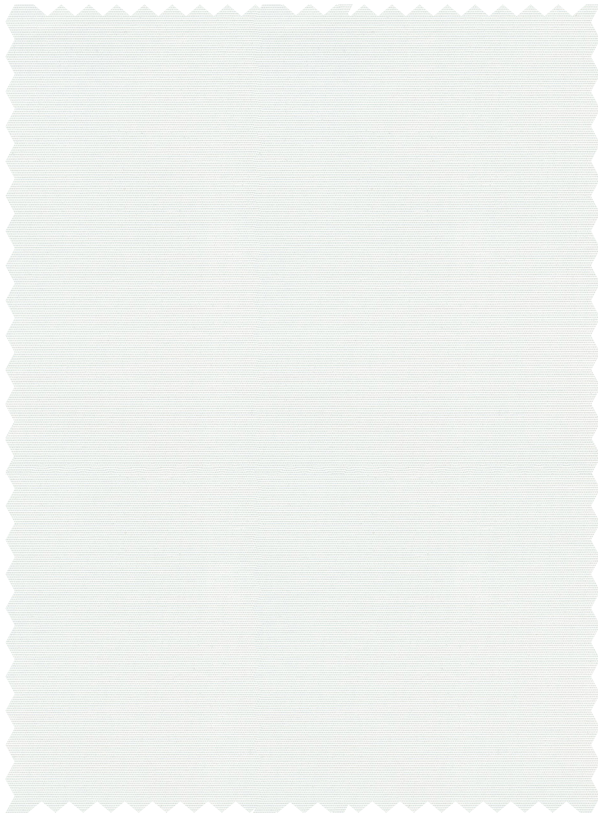


R99 **NEW** Midnight x2

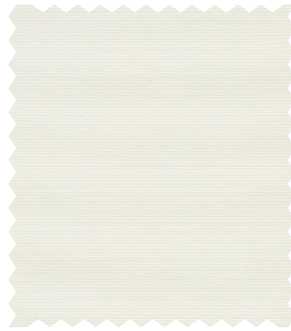


STYLE 7500R RESIDENTIAL **NEW**

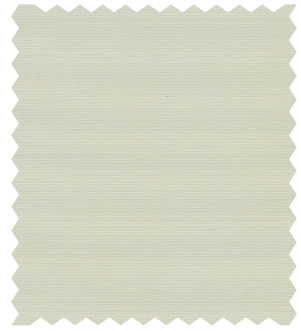
R44 Ice



R45 Cloud



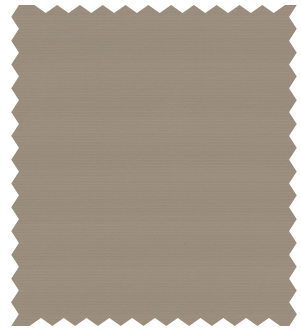
R46 Porcelain



R51 Dune



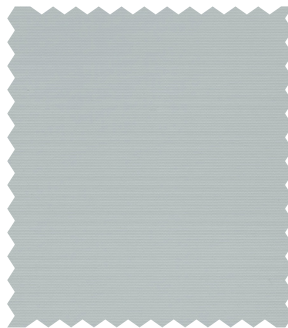
R52 Stone



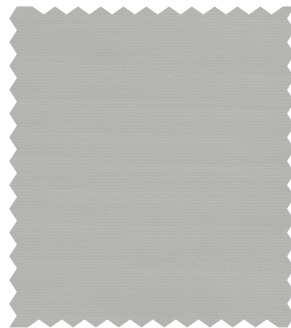
R47 Limestone



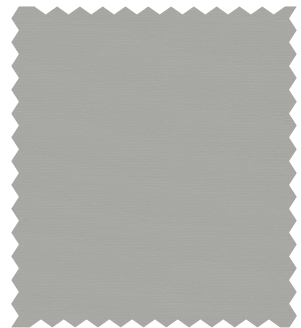
R48 Mist



R49 Nimbus



R50 Tundra



R53 Odyssey



R54 Orient



R55 Midnight



STYLE 7500 / 7500R SPECIFICATIONS

This attractive blackout fabric maintains high quality at an economical price. Style 7500 is presented in a classic range of neutral colors with a unique PVC-free composition and is ideal for commercial applications. SheerWeave Style 7500 is an excellent option when total light blockage is needed and all Style 7500 colors have an off-white backing.

New Style 7500R, a companion to the Style 7500 range, maintains the same look and feel as its namesake at substantial cost savings and is designed specifically for residential use where commercial fire certifications are not required.

STYLE 7500 FIRE CLASSIFICATION

California U.S. Title 19 (small scale)
CAN/ULC-S 109 (large and small scale)
CAN/CGSB 2-4.162-M80
NFPA 101 (Class A Rating)

NFPA 701 TM#1 (small scale)
IBC Section 803.1.1 (Class A Rating)
BS 5867 Part 2 Type B Performance

STYLE 7500R FIRE CLASSIFICATION

California Technical Bulletin 117
NFPA 101 (Class B Rating)

IBC Section 803.1.1 (Class B Rating)

Fire classifications are subject to change. Please go to phifer.com for the most current information.

BACTERIA AND FUNGAL RESISTANCE

ASTM E 2180 ASTM G21

ENVIRONMENTAL CERTIFICATION

GREENGUARD GREENGUARD Gold
Certified to these standards for low chemical emissions into indoor air during product usage

SAFE USE

RoHS/Directive 2002/95/EC
ANSI/WCMA A 100.1-2007 for lead content
US Consumer Product Safety Commission Section 101

WARRANTY

5-year interior

ACOUSTICAL PERFORMANCE

NRC (Noise Reduction Coefficient) and SAA (Sound Absorption Average) tested in accordance with ASTM C423-09a

UV PROTECTION

Seal of Approval by the Melanoma International Foundation (MIF) for effectiveness in preventing sun damage to the skin or eyes

CLEANING INSTRUCTIONS

Fabric should be regularly dusted/vacuumed as appropriate. If commercial spot cleaners are used, they must first be tested and allowed to dry on an inconspicuous area to ensure compatibility.

Railroading this fabric is not recommended.

Colors may vary slightly from swatch samples. All variations are within industry standards.

STYLE	7500	7500R
WIDTHS	118" 300 cm	118" 300 cm
ROLL LENGTH	30 Linear Yards 27.4 Linear Meters	30 Linear Yards 27.4 Linear Meters
COMPOSITION	100% Polyester with Acrylic Coating	100% Polyester with Acrylic Coating
MESH WEIGHT	12.14 oz/yd ² 412 g/m ²	10.7 oz/yd ² 363 g/m ²
FABRIC THICKNESS	0.016 in 0.40 mm	0.012 in 0.305 mm
OPENNESS FACTOR	Opaque	Opaque
ACOUSTICAL VALUE	NRC .00 / SAA .03	NRC .00 / SAA .03

PHIFER
INCORPORATED

P. O. Box 1700 • Tuscaloosa, Alabama 35403 -1700 USA
Phone: 205.345.2120 • FAX: 205.391.0799
Toll Free USA/Canada: 1.800.221.5497
phifer.com • ISO Registered



© SheerWeave is a registered trademark of PHIFER INCORPORATED.
™ UL, the UL logos and the UL mark are trademarks of UL LLC.
Photo courtesy of Hunter Douglas, South America.
© PHIFER INCORPORATED V20 021420 3033844