

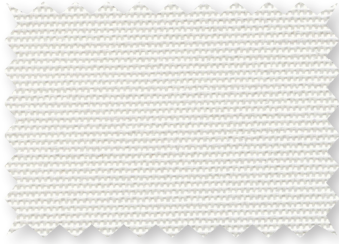


STYLE
7000
BLACKOUT FABRIC

WEAVING
EXCELLENCE
WITH
INNOVATION



P62 **White**



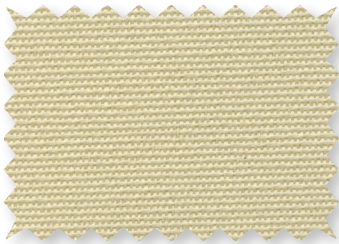
P64 **Sand**



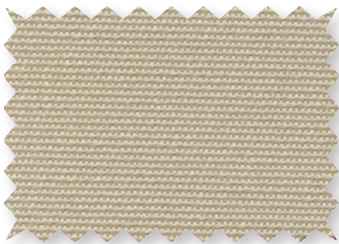
P63 **Birch**



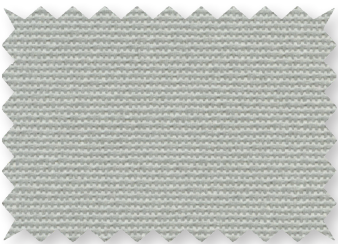
Q57 **Wheat**



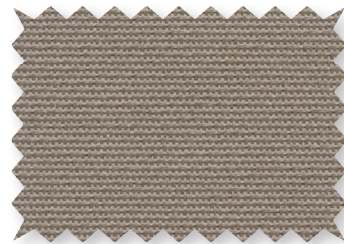
U67 **Canvas**



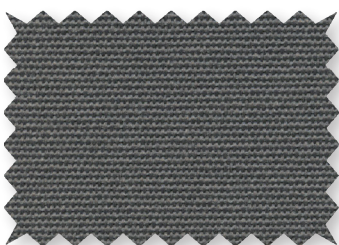
V41 **Canyon**



Q58 **Mushroom**



V39 **Graphite**



U69 **Cocoa**



V40 **Onyx**



*Colors may vary based on individual computer settings and should only be used for general reference.

Code	Color	SOLAR OPTICAL PROPERTIES				SHGC/G VALUE g-tot (glass & blind)	
		TS	RS	AS	TV	SINGLE 1/4 CL	INSULATING 1 HA
STYLE 7000 - BLACKOUT							
P62	White	0	64	36	0	0.27	0.21
V40	Onyx	0	64	36	0	0.27	0.21



PRODUCT CERTIFIED FOR
LOW CHEMICAL EMISSIONS
UL.COM/GG
UL 2818



MIF Seal of Approval



TS = Solar Transmittance
RS = Solar Reflectance
AS = Solar Absorption
TV = Visual Transmittance

SHGC = Solar Heat Gain Coefficient

1/4 CL = 1/4" Clear Glass
1 HA = 1" Heat Absorbing Glass

Fabrics Installed Internally
Zero-Degree Profile Angle

For additional performance values, test
references and technical definitions visit us at
www.phifer.com.

STYLE 7000 SPECIFICATIONS

Style 7000 is uniquely designed to provide total light blockage when complete room darkening is needed. With a broad range of decorator colors, the look and feel of rich cloth and a PVC-free composition, Style 7000 will enhance the beauty and function of both commercial and residential spaces. All Style 7000 colors have an off-white backing.

FIRE CLASSIFICATION	California U.S. Title 19 (small scale) BS 5867 Part 2 Type B Performance IBC Section 803.1.1 (Class A Rating)	NFPA 701 TM#1 (small scale) CAN/ULC-S 109-03 (large and small scale) CAN/CGSB2-4.162-M80
BACTERIA AND FUNGAL RESISTANCE	ASTM G21-96	AATCC 174-1998 Part II and III
ENVIRONMENTAL CERTIFICATION	GREENGUARD	GREENGUARD Gold
	Certified to these standards for low chemical emissions into indoor air during product usage	
LEAD FREE	RoHS/Directive 2002/95/EC ANSI/WCMA A 100.1-2007 for lead content US Consumer Product Safety Commission Section 101	
WARRANTY	5-year interior	
ACOUSTICAL PERFORMANCE	NRC (Noise Reduction Coefficient) and SAA (Sound Absorption Average) tested in accordance with ASTM C423-09a	
UV PROTECTION	Seal of Approval by the Melanoma International Foundation (MIF) for effectiveness in preventing sun damage to the skin or eyes	
CLEANING INSTRUCTIONS	Fabric should be regularly dusted/vacuumed as appropriate. If commercial spot cleaners are used, they must first be tested and allowed to dry on an inconspicuous area to ensure compatibility.	

Railroading this fabric is not recommended.

Colors may vary slightly from swatch samples. All variations are within industry standards.

STYLE 7000

WIDTHS	94" and 118" 238.8 cm and 300 cm
ROLL LENGTH	30 Linear Yards 27.4 m
COMPOSITION	100% Polyester with Acrylic Flocked Backing
MESH WEIGHT	13.92 oz/yd ² 472.97 g/m ²
FABRIC THICKNESS	0.030 in 0.76 mm
OPENNESS FACTOR	Opaque
ACOUSTICAL VALUE	NRC .10 / SAA .08

PHIFER
INCORPORATED

P. O. Box 1700 • Tuscaloosa, Alabama 35403-1700 USA
Phone: 205.345.2120 • FAX: 205.391.0799
Toll Free USA/Canada: 1.800.221.5497
www.phifer.com • ISO Registered



© SheerWeave is a registered trademark of PHIFER INCORPORATED.
™ UL, the UL logos and the UL mark are trademarks of UL LLC.
Photo courtesy of Lafayette Venetian Blind, West Lafayette, Indiana, USA.
© PHIFER INCORPORATED V16B 3033842