

Signature Series

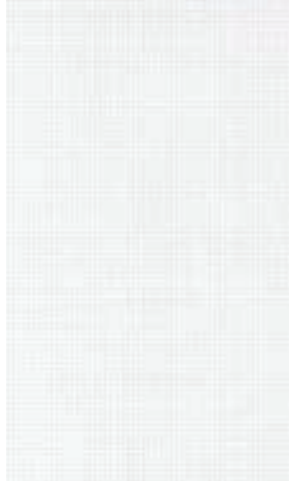


1%



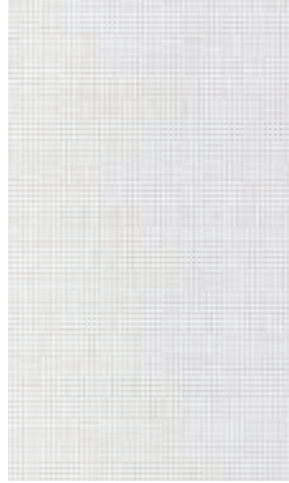
White/White

3%



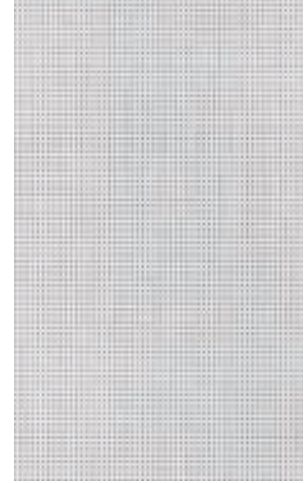
White/White

5%



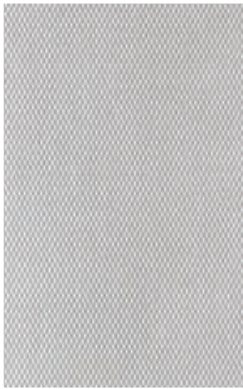
White/White

10%



White/White

Please check specifications for color availability as not all colors are available in all openess factors.



White/Gray



White/Linen



Bone/Bone



Beige/Gray



Gray/Gray



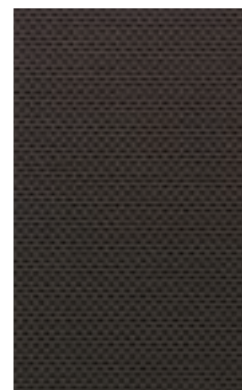
Black/Gray



Black/Dark Gray



Black/Black



Charcoal/Bronze

Specifications

Fire Classification: NFPA 701

Bacteria and Fungal Resistance: ASTM G21

Environmental Certifications: GREENGUARD, GREENGUARD Gold, REACH, and RoHS - Lead Free

Composition: 24% Polyester / 76% PVC



Signature Series 1%

Openness Factor: 1%

Weight: 14.57oz/sq yd. (494g/sqm) (+/- 5%)

Thickness: 0.025 in (0.63mm) +/-5%

Widths: 78.7" (200cm) 98.4" (250cm), 118" (300cm)

Standard Roll Length: 33 lyds (30m)

Color No.	Color	Solar Optical Properties*				Shading Coefficient		
		TS	RS	AS	TV	1/8CL	1/4CL	1/4HA
001	White/White	20	72	8	17	0.30	0.31	0.30
003	White/Gray	10	52	38	6	0.42	0.41	0.36
016	White/Linen	14	60	26	9	0.37	0.37	0.34
914	Black/Black	1	4	95	2	0.73	0.69	0.50
1241	Charcoal/Bronze	2	8	90	2	0.71	0.67	0.49
906	Black/Dark Gray	1	11	88	2	0.68	0.65	0.48
404	Bone/Bone	12	55	33	6	0.40	0.40	0.35
203	Beige/Gray	10	41	49	6	0.50	0.48	0.39
303	Gray/Gray	5	32	63	3	0.55	0.53	0.42
903	Black/Gray	2	15	83	2	0.66	0.62	0.47

Signature Series 3%

Openness Factor: 3%

Weight: 13.93oz/sq yd. (472g/sqm) (+/- 5%)

Thickness: 0.024in (0.61mm) +/-5%

Widths: 78.7" (200cm), 98.4" (250cm), 118" (300cm)

Standard Roll Length: 33 lyds (30m)

Color No.	Color	Solar Optical Properties*				Shading Coefficient		
		TS	RS	AS	TV	1/8CL	1/4CL	1/4HA
001	White/White	22	70	8	19	0.32	0.32	0.31
003	White/Gray	12	49	39	9	0.44	0.43	0.37
016	White/Linen	17	57	26	13	0.40	0.40	0.35
914	Black/Black	3	4	93	5	0.73	0.69	0.51
1241	Charcoal/Bronze	5	9	86	7	0.70	0.67	0.49
906	Black/Dark Gray	4	12	84	5	0.69	0.65	0.48
404	Bone/Bone	14	54	32	8	0.41	0.41	0.36
203	Beige/Gray	13	39	48	9	0.52	0.50	0.40
303	Gray/Gray	7	33	60	4	0.55	0.52	0.42
903	Black/Gray	5	18	78	4	0.65	0.61	0.47

Signature Series 5%

Openness Factor: 5%

Weight: 12.71oz/sq yd. (431g/sqm) (+/- 5%)

Thickness: 0.023in (0.60mm) +/-5%

Widths: 78.7" (200cm), 98.4" (250cm), 118" (300cm)

Standard Roll Length: 33 lyds (30m)

Color No.	Color	Solar Optical Properties*				Shading Coefficient		
		TS	RS	AS	TV	1/8CL	1/4CL	1/4HA
001	White/White	25	68	7	22	0.35	0.35	0.37
003	White/Gray	14	49	37	11	0.45	0.44	0.35
016	White/Linen	19	57	24	15	0.41	0.40	0.51
914	Black/Black	5	4	91	8	0.74	0.70	0.50
1241	Charcoal/Bronze	7	8	85	10	0.71	0.68	0.33
906	Black/Dark Gray	5	11	84	5	0.70	0.66	0.49
203	Beige/Gray	15	40	45	11	0.52	0.50	0.41
303	Gray/Gray	11	32	57	8	0.57	0.54	0.43
903	Black/Gray	6	17	77	5	0.65	0.62	0.47

Signature Series 10%

Openness Factor: 10%

Weight: 11.65oz/sq yd. (395g/sqm) (+/- 5%)

Thickness: 0.022in (0.56mm) +/-5%

Widths: 78.7" (200cm), 98.4" (250cm), 118" (300cm)

Standard Roll Length: 33 lyds (30m)

Color No.	Color	Solar Optical Properties*				Shading Coefficient		
		TS	RS	AS	TV	1/8CL	1/4CL	1/4HA
001	White/White	29	63	8	25	0.39	0.38	0.35
003	White/Gray	18	42	40	19	0.51	0.49	0.40
016	White/Linen	22	55	23	17	0.43	0.42	0.36

*Performance evaluations conducted in accordance to requirements

TS = Solar Transmittance 1/8CL = 1/8" Clear Glass
 RS = Solar Reflectance 1/4CL = 1/8" Clear Glass
 AS = Solar Absorbance 1/4HA = 1/4" Heat Absorbing Glass
 TV = Visual Transmittance

The solar optical properties are used to calculate the shading coefficient. The shading coefficient represents the percentage of solar gain that is transmitted to the interior through the glass and shading system. Darker colors provide maximum glare reduction and visibility. For complete technical information, current test results, performance specifications and larger samples, contact Roll-A-Shade® Incorporated.