



# CONTRACT PLUS<sup>+</sup>

MANUAL & MOTORIZED

OPEN ROLL

POCKET SINGLE

POCKET DUAL

FASCIA TOP

FASCIA BOTTOM

DUAL

4"

5"

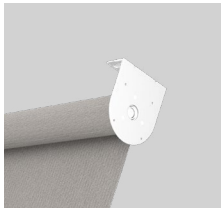
6"

7"

7" X 9"

# SYSTEM DETAILS

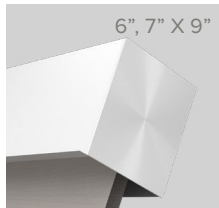
## MANUAL & MOTORIZED



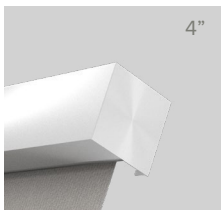
OPEN ROLL



POCKET SINGLE



POCKET DUAL



FASCIA BOTTOM



FASCIA TOP



DUAL



## COMMERCIAL USE

Architectural grade quality to meet the performance requirements of any commercial application in both manual or motorized with enclosed headboxes, extra-large shades, fascias, open roll, and linked 7" motorization.

## CONSISTENCY

Contract Plus+ commercial-grade shading solutions ensure design consistency throughout your building and feature our superior quality, service, and installation guarantee.

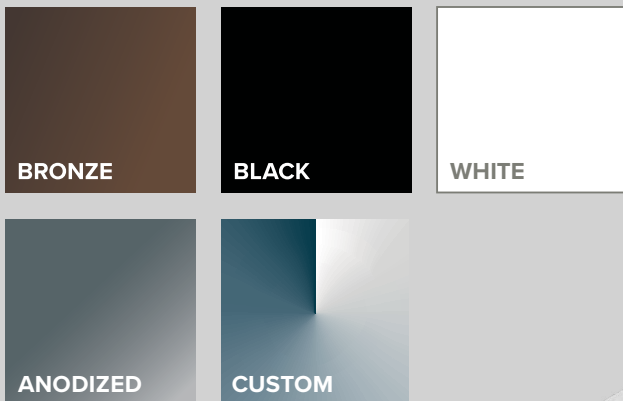
## PERFORMANCE TESTED

All of our shades are end-of-line tested to ensure the highest level of quality and customer satisfaction.

## AUTOMATION

For full automation, the Contract+ Shade can be controlled with our Eclipse sun sensor or any of our other automation products available.





# CUSTOM OPTIONS

## POWDER COATED

Providing a protective layer with polyester or epoxy powder. Get the satisfaction of your system looking new and protected.

## ANODIZED

Anodizing is an electrochemical process that converts the metal surface into a decorative, durable, corrosion-resistant, anodic oxide finish.

FIVE YEAR WARRANTY | \*CONTACT A SALES REP FOR DETAILED WARRANTY INFO

# COLORS



# INTERIOR & EXTERIOR

## CAPABILITIES

The Contract Series is ideal for facilities and rooms where light and privacy are a concern. When combined with a blackout shade the contract series encompasses all edges of the fabric providing no visual line of sight into the space. Provide any room with a stylish and functional contract series roller shade to significantly reduce light and glare when using projectors or television. The Contract Series system was also designed to allow shades to be integrated into the ceiling for concealment above the drop ceiling.

# CHOOSING THE RIGHT FABRIC

When choosing the fabric for your space, it's important to identify your main sun issues. The two most common issues are glare and heat gain and often times it's important to consider preserving the view through as well. Identifying these concerns will help narrow your fabric choices so your roller shade fabric provides optimum relief to make your space more comfortable.

## DARK FABRICS

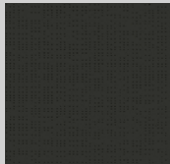
A darker colored fabric is ideal when glare control and view through are a necessity. Dark colored fabrics transmit less light which in return has a lower surface brightness and reflectivity. When preserving outdoor views is important, dark fabrics are the most ideal option.

## DUPLEX FABRICS

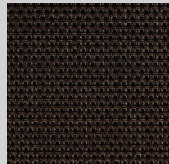
Duplex fabrics are an ideal solution when both heat gain and glare are issues. The light color faces outside to reflect sunlight and reduce heat gain. The darker color faces the interior and preserves view-through while also reducing glare. Utilizing the benefits of both light and dark colors, this fabric is the perfect solution for sun control.

## LIGHT FABRICS

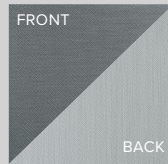
A lighter colored fabric will reflect sunlight and in turn will absorb less heat, lowering the heat gain in the space. Light colored fabrics are ideal for facades that experience intense UV rays and harsh sunlight.



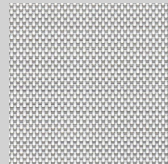
Serge Ferrari 4%  
Soltis 92-2053



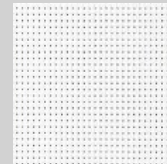
Mermet 3%  
Charcoal/Bronze



Phifer 3%  
Oyster/Pewter



Phifer 10%  
Granite



Sig. Series 5%  
White/White



\*CONTACT OUR SALES EXPERTS FOR MORE FABRIC INFORMATION



# OUR COMPANY

Roll-A-Shade® has been manufacturing, installing and servicing window shades for 35 years. Our superior reputation spans all industries with the highest expertise in restaurant, convenience, financial, grocery and retail.

## **SPECIALIZING IN COMMERCIAL ROLLER SHADES**

MANUAL SHADES & MOTORIZED SHADES | INTERIOR & EXTERIOR



## **HEADQUARTERS & WEST COAST MANUFACTURING**

12101 Madera Way  
Riverside, CA 92503  
rollashade.com  
TF 1.888.245.5077  
P 951.245.5077

## **CANADIAN SALES & ENGINEERING**

7240 Woodbine Ave. Suite 215  
Markham, ON L3R 1A4  
rollashade.ca

## **EAST COAST MANUFACTURING**

3117 NW 25th Ave.  
Pompano Beach, FL 33069



CONTACT

OPEN