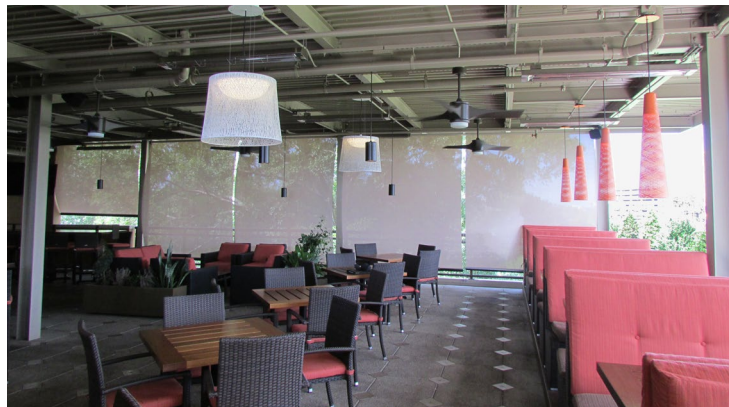


CABLE GUIDE



MANUAL & MOTORIZED
CASSETTE
FASCIA
OPEN ROLL

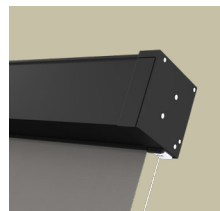


SYSTEM DETAILS

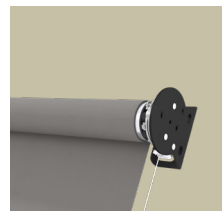
MANUAL & MOTORIZED



CASSETTE



FASCIA



OPEN ROLL

INCREASE OCCUPANCY

The Cable Guide allows you to seat more occupants in outdoor seating areas, thus increasing revenue.

IMPROVED COMFORT

This heavy-duty system is made to withstand moisture and temperature fluctuation while keeping your customers comfortable.

EASY TO OPERATE

The Cable Guide System can be operated by using a spring-assisted gear or motorization.

AUTOMATION

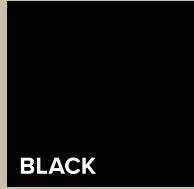
For full automation, the Cable Guide can be controlled with our Eclipse sun sensor or any of our other automation products available.



GRAY



BRONZE



BLACK

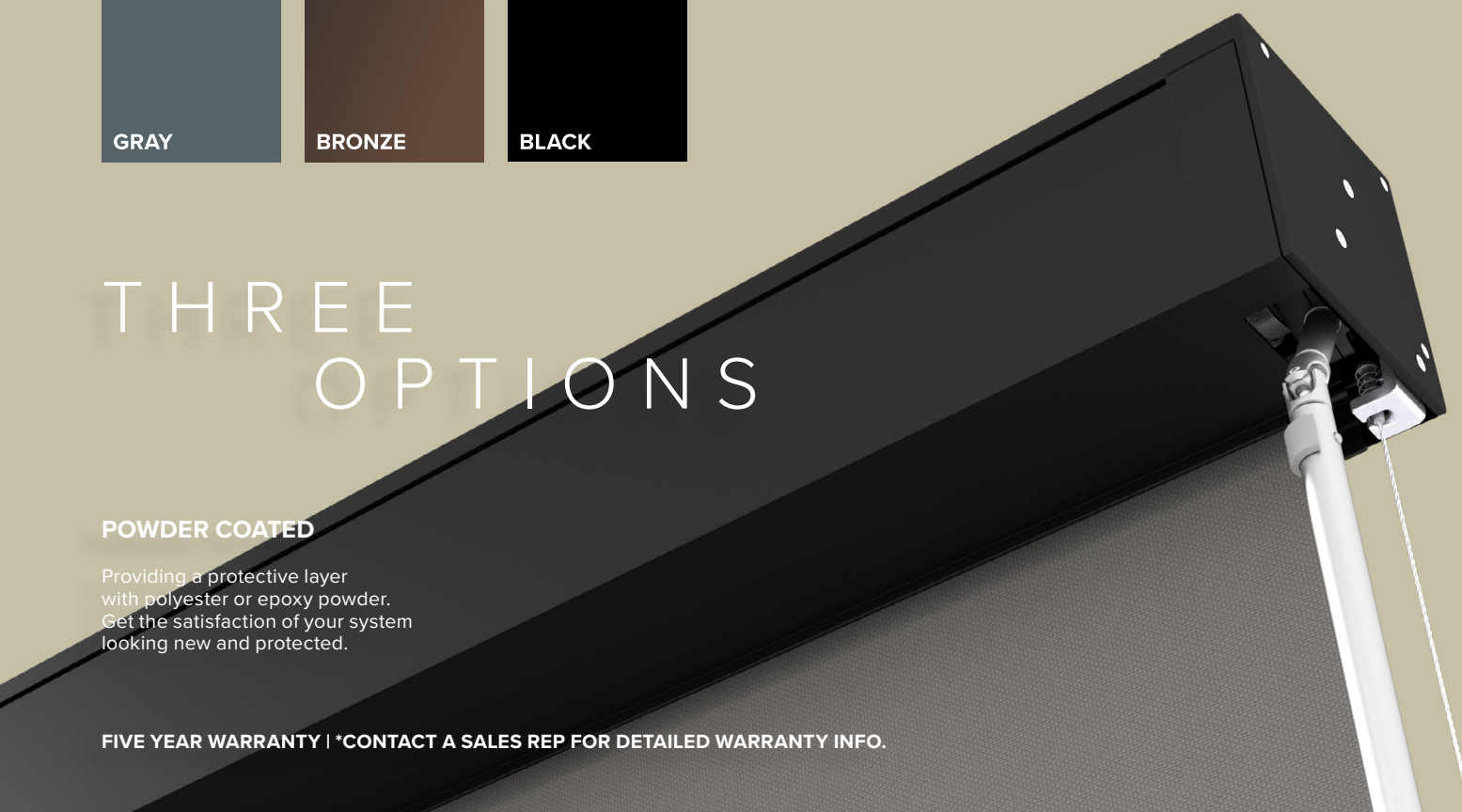
THREE OPTIONS

POWDER COATED

Providing a protective layer with polyester or epoxy powder. Get the satisfaction of your system looking new and protected.

FIVE YEAR WARRANTY | *CONTACT A SALES REP FOR DETAILED WARRANTY INFO.

COLORS





INTERIOR & EXTERIOR

CAPABILITIES

The Cable Guide System is a cost effective solution to provide comfort on outdoor patios and living spaces. This robust system will block up to 95% of harmful UV rays, reduce heat and minimize glare. The Cable Guide System is ideal for residential and commercial projects alike. Custom branding is available and the additional advertising can be key to your success. The printed shade allows you to increase brand awareness while keeping your customers comfortable and happy.

FAQ FREQUENTLY ASKED QUESTIONS

I NOTICED THE MANUAL STYLE IS CRANK OPERATED. HOW LONG ARE THE WANDS?

Crank Control Arm 100cm (3.2ft) & Crank Control Arm 200cm (6.5ft).

WITH THE MOTORIZED VERSION, IS THERE A WIND SENSOR TO MAKE SURE THE SHADE IS UP DURING HIGH WINDS?

Yes, please ask our staff about this option.

WHAT IS THE WIND RATING?

It is rated to withstand up to 25 mph but should always be instructed to be put in the up position during inclement weather.

CAN THIS PRODUCT BE USED ON THE INTERIOR?

Yes. It is perfect for very long shades that need help tracking straight and for angled in or out windows.

IS A CRANK ARM NECESSARY FOR EVERY SHADE?

No, our motorized cable guide shades do not need a crank arm.

OUR COMPANY

Roll-A-Shade® has been manufacturing, installing and servicing window shades for 35 years. Our superior reputation spans all industries with the highest expertise in restaurant, convenience, financial, grocery and retail.

SPECIALIZING IN COMMERCIAL ROLLER SHADES

MANUAL SHADES & MOTORIZED SHADES | INTERIOR & EXTERIOR

THREE - SIXTY EXPERIENCE

Roll-A-Shade® products come with a three-sixty service guarantee. We are with you from the first measurement through the lifetime of your shade system.



MEASURE & MANUFACTURE

We conduct a field measure and manufacture the shades.



INSTALL

We install the shades.



SERVICE

Plus, we service all of your shades, when necessary.



DESIGN

Work with our Architectural Department for custom applications.

HEADQUARTERS & WEST COAST MANUFACTURING

12101 Madera Way
Riverside, CA 92503
rollashade.com
TF 1.888.245.5077
P 951.245.5077

CANADIAN SALES & ENGINEERING

7240 Woodbine Ave. Suite 215
Markham, ON L3R 1A4
rollashade.ca

EAST COAST MANUFACTURING

3117 NW 25th Ave.
Pompano Beach, FL 33069

CONTACT
CONTACT

OPENING

